



PROPOSED INSIDE CONCRETE GUTTER (SEE DETAILS)

**LEGEND:**

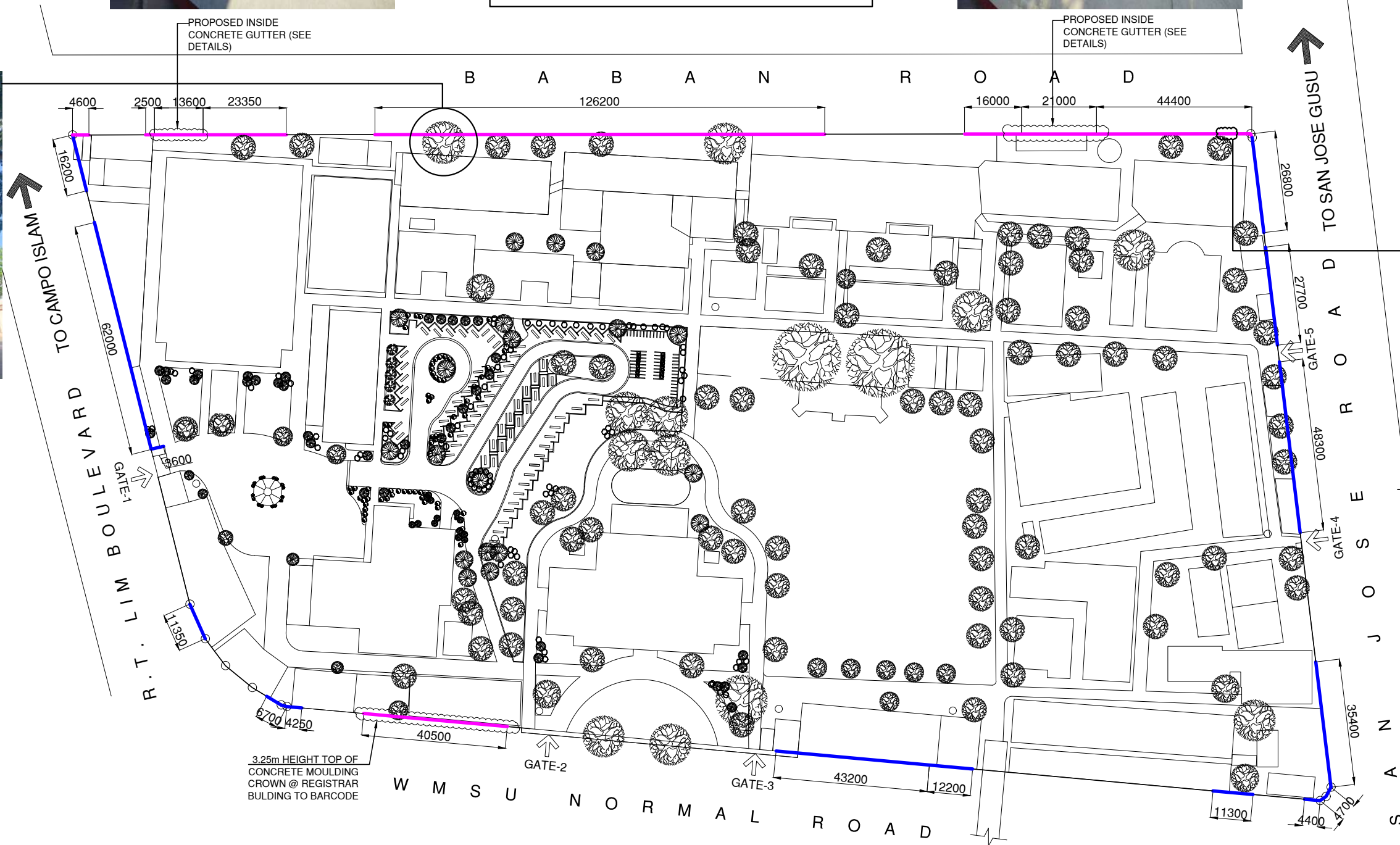
- 3.25m HEIGHT FROM SIDEWALK LEVEL TO TOP OF CONCRETE MOULDING CROWN
- 2.5m HEIGHT FROM SIDEWALK LEVEL TO TOP OF CONCRETE MOULDING CROWN



PROPOSED INSIDE CONCRETE GUTTER (SEE DETAILS)



MAHOGANY TREE TO BE CUT DOWN



EXISTING LOUVER WINDOW TO BE REMOVED AND FILLED WITH CONCRETE, CEMENT PLASTER AND PAINT FINISH (COLOR: TO ARCHITECT'S APPROVAL)

TOTAL LINEAR METER : 568.87 LINEAR METER

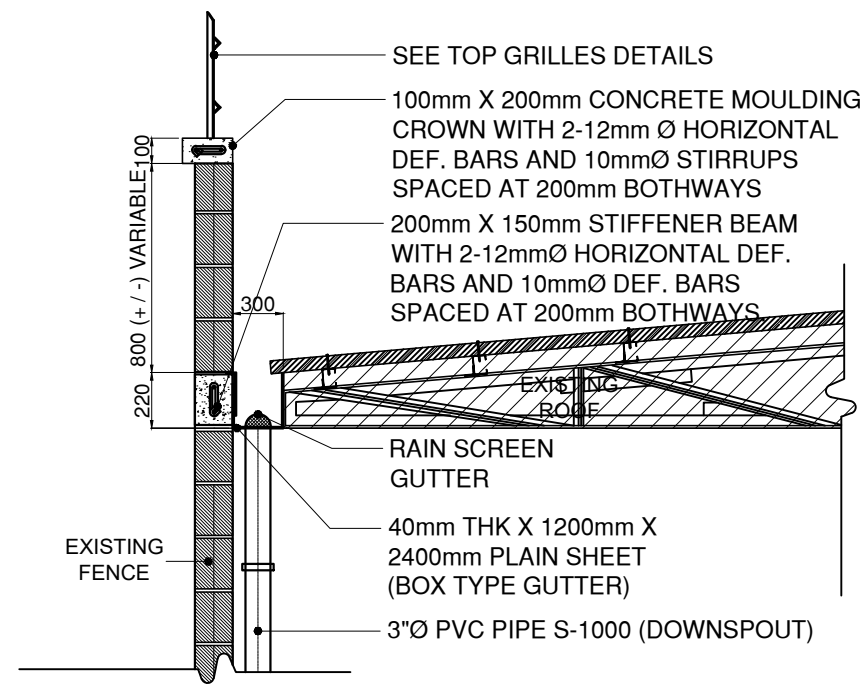
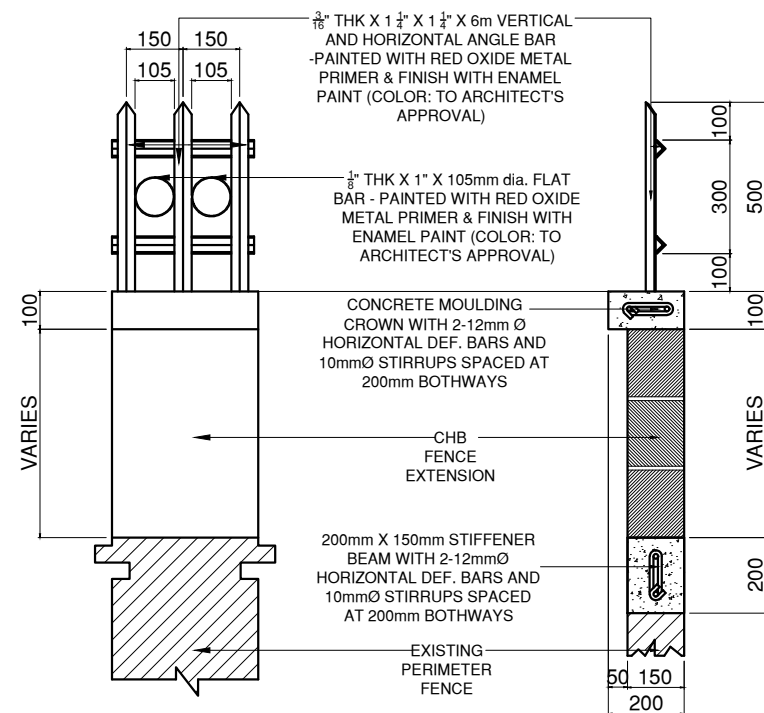
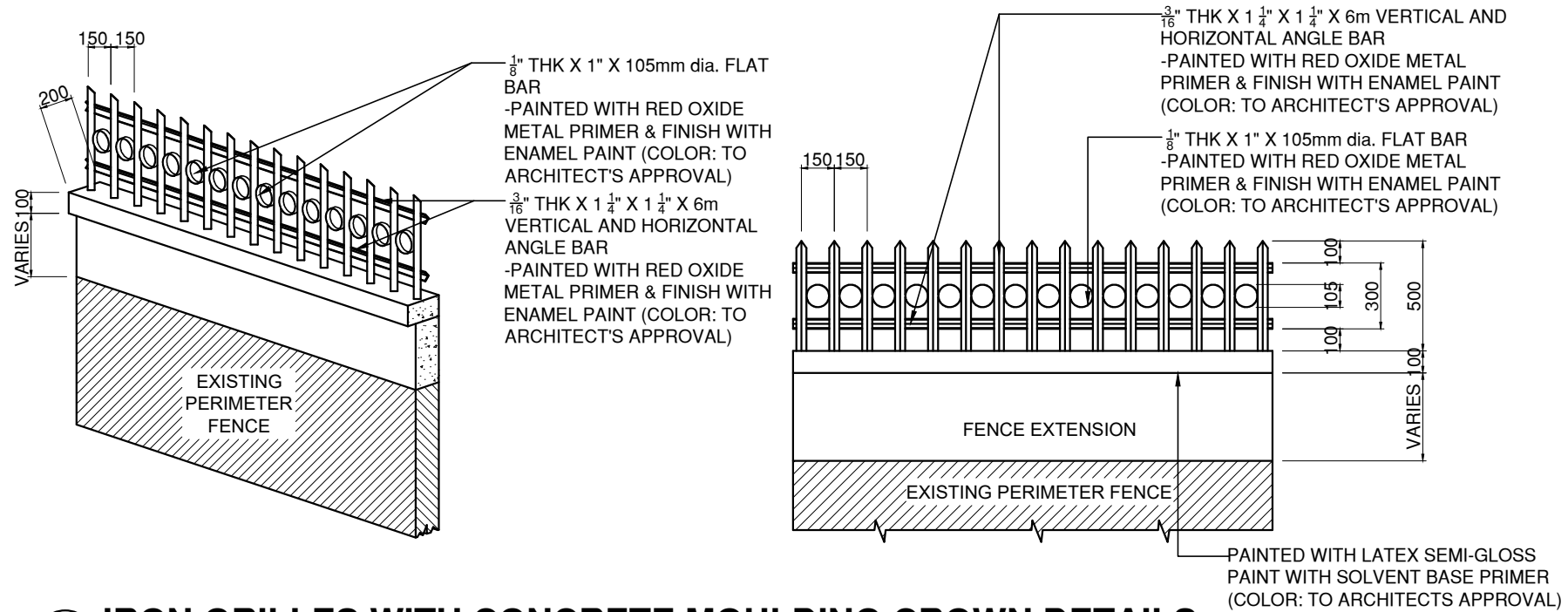
**PERIMETER FENCE LAYOUT (CAMPUS-A)**

SCALE N.T.S.


	DESIGNED BY:	PROJECT TITLE:	REQUISITIONER:	RECOMMENDING APPROVAL:	RECOMMENDING APPROVAL:	APPROVED BY:	SHEET CONTENTS	SHEET NO.
	ARCH. JOSEPH ANDREW L. SAHIAL UNIVERSITY ARCHITECT	REPAIR OF PERIMETER FENCE AT WMSU CAMPUS A & B	PHYSICAL PLANT AND ENGINEERING SERVICES	ARCH. JOSEPH ANDREW L. SAHIAL DIRECTOR FOR PHYSICAL PLANT & ENGINEERING SERVICES	JOSELITO D. MADROÑAL, DPA VICE PRESIDENT FOR ADMINISTRATION AND FINANCE	MA. CARLA A. OCHOTORENA, RN, PhD UNIVERSITY PRESIDENT	-WMSU CAMPUS A PERIMETER FENCE LAYOUT DRAFTED BY: C. VALDEZ	A1 0106
PRC: 0010557    PTR: 2792209    TIN: 445-013-228	LOCATION: WMSU LOT-A&B, BARANGAY BALIWASAN, ZC		PRC: 0010557    PTR: 2792209    TIN: 445-013-228					

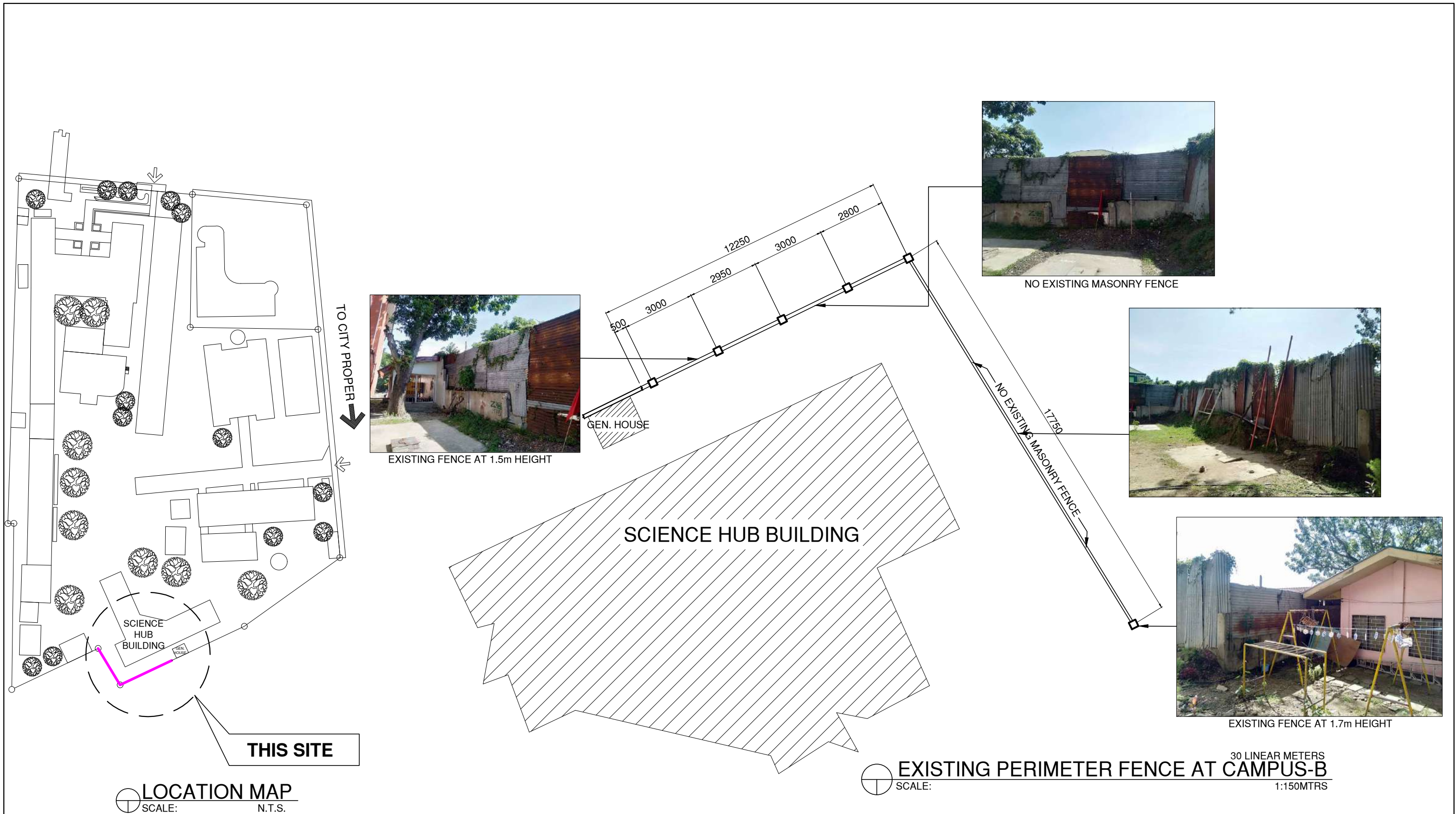
**NOTES:**


- ALL IRON GRILLES MUST BE LEVEL FROM SIDEWALK LEVEL TO APEX.
- TOP OF CONCRETE MOULDING CROWN WITH A MAXIMUM HEIGHT OF 3.25m FOR BABAN ROAD AND 2.5m HEIGHT REST

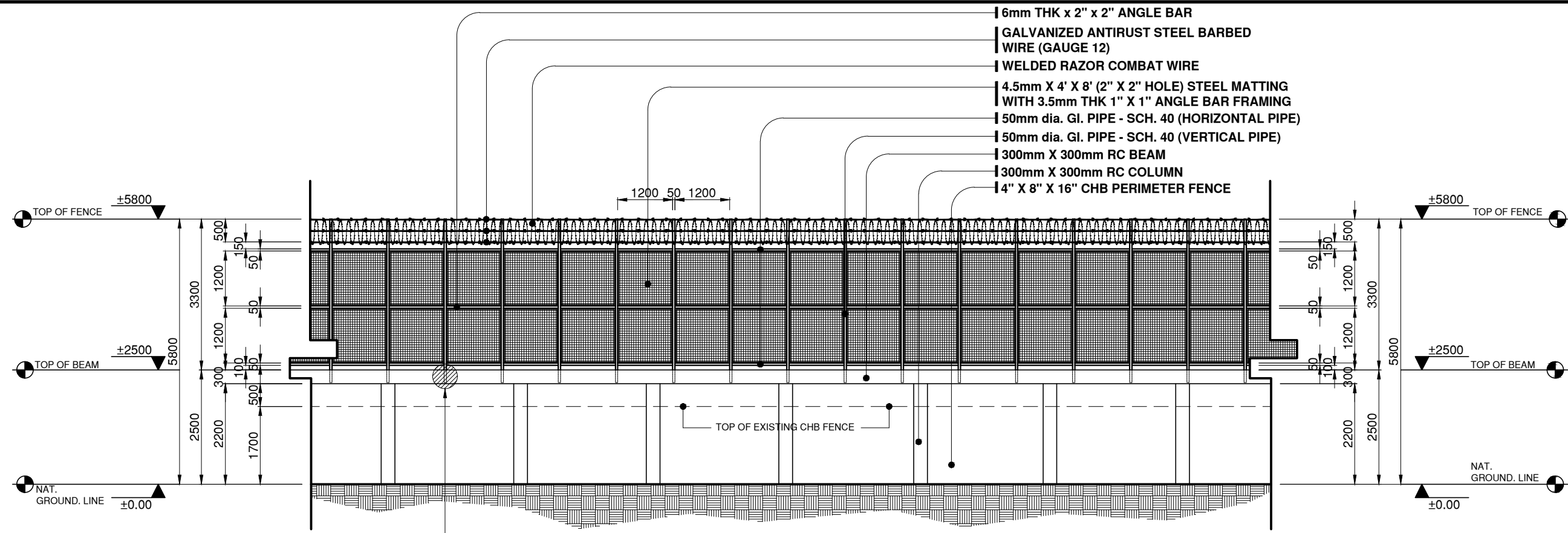


TOTAL LINEAR METER: 34.6 LINEAR METERS

	DESIGNED BY:	PROJECT TITLE:	REQUISITIONER:	RECOMMENDING APPROVAL:	RECOMMENDING APPROVAL:	APPROVED BY:	SHEET CONTENTS	SHEET NO.
	ARCH. JOSEPH ANDREW L. SAHIAL UNIVERSITY ARCHITECT	REPAIR OF PERIMETER FENCE AT WMSU CAMPUS A & B	PHYSICAL PLANT AND ENGINEERING SERVICES	ARCH. JOSEPH ANDREW L. SAHIAL DIRECTOR FOR PHYSICAL PLANT & ENGINEERING SERVICES	JOSELITO D. MADROÑAL, DPA VICE PRESIDENT FOR ADMINISTRATION AND FINANCE	MA. CARLA A. OCHOTORENA, RN, PhD UNIVERSITY PRESIDENT	-CONCRETE MOULDING CROWN DETAILS -BLOW-UP DETAILS -CHB FENCE AND GRILLES DETAILS FOR TREE DRAFTED BY: C. VALDEZ	A2 0206
PRC: 0010557    PTR: 2792209    TIN: 445-013-228	LOCATION: WMSU LOT-A&B, BARANGAY BALIWASAN, ZC		PRC: 0010557    PTR: 2792209    TIN: 445-013-228					

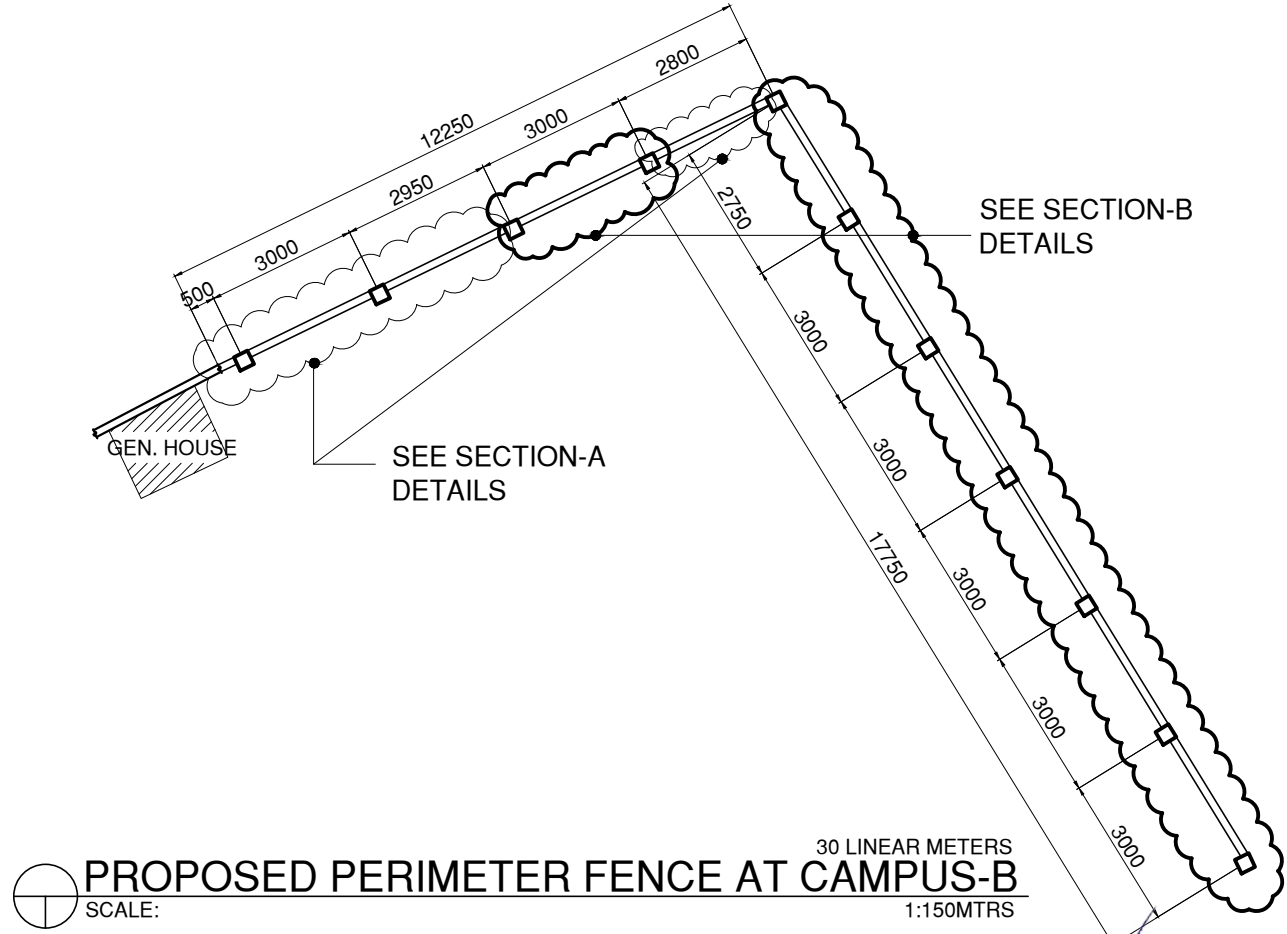


	DESIGNED BY:	PROJECT TITLE:	REQUISITIONER:	RECOMMENDING APPROVAL:	RECOMMENDING APPROVAL:	APPROVED BY:	SHEET CONTENTS	SHEET NO.
	ARCH. JOSEPH ANDREW L. SAHIAL UNIVERSITY ARCHITECT PRC: 0010557 PTR: 2792209 TIN: 445-013-228	<b>REPAIR OF PERIMETER FENCE AT WMSU CAMPUS A &amp; B</b> LOCATION: WMSU LOT-A&B, BARANGAY BALIWASAN, ZC	<b>PHYSICAL PLANT AND ENGINEERING SERVICES</b>	ARCH. JOSEPH ANDREW L. SAHIAL DIRECTOR FOR PHYSICAL PLANT & ENGINEERING SERVICES PRC: 0010557 PTR: 2792209 TIN: 445-013-228	JOSELITO D. MADROÑAL, DPA VICE PRESIDENT FOR ADMINISTRATION AND FINANCE	MA. CARLA A. OCHOTORENA, RN, PhD UNIVERSITY PRESIDENT	-LOCATION MAP -EXISTING PERIMETER FENCE DRAFTED BY: C. VALDEZ	<b>A3</b> <b>04/06</b>



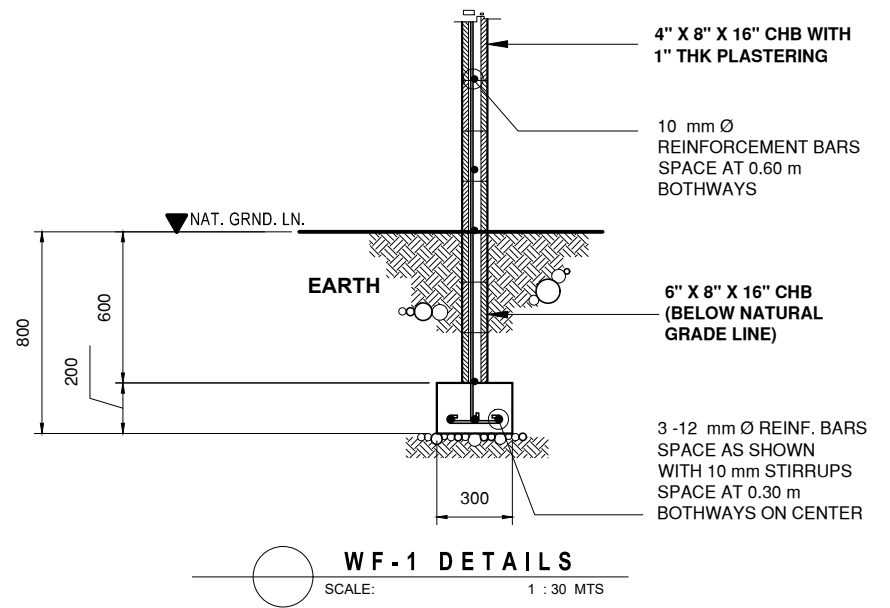
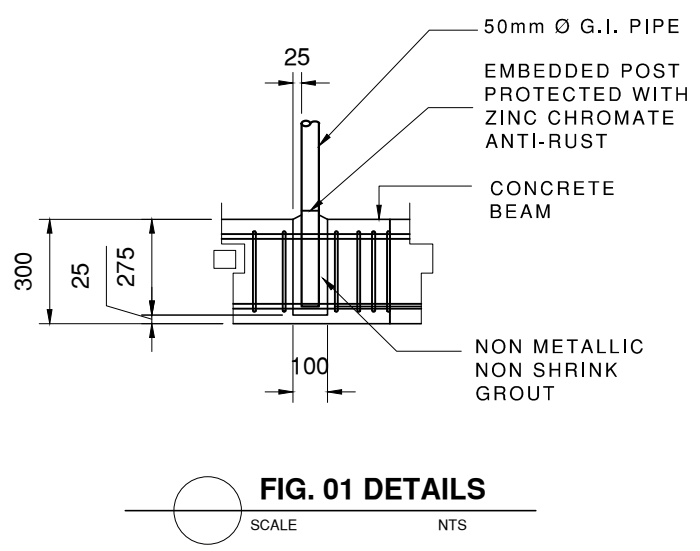
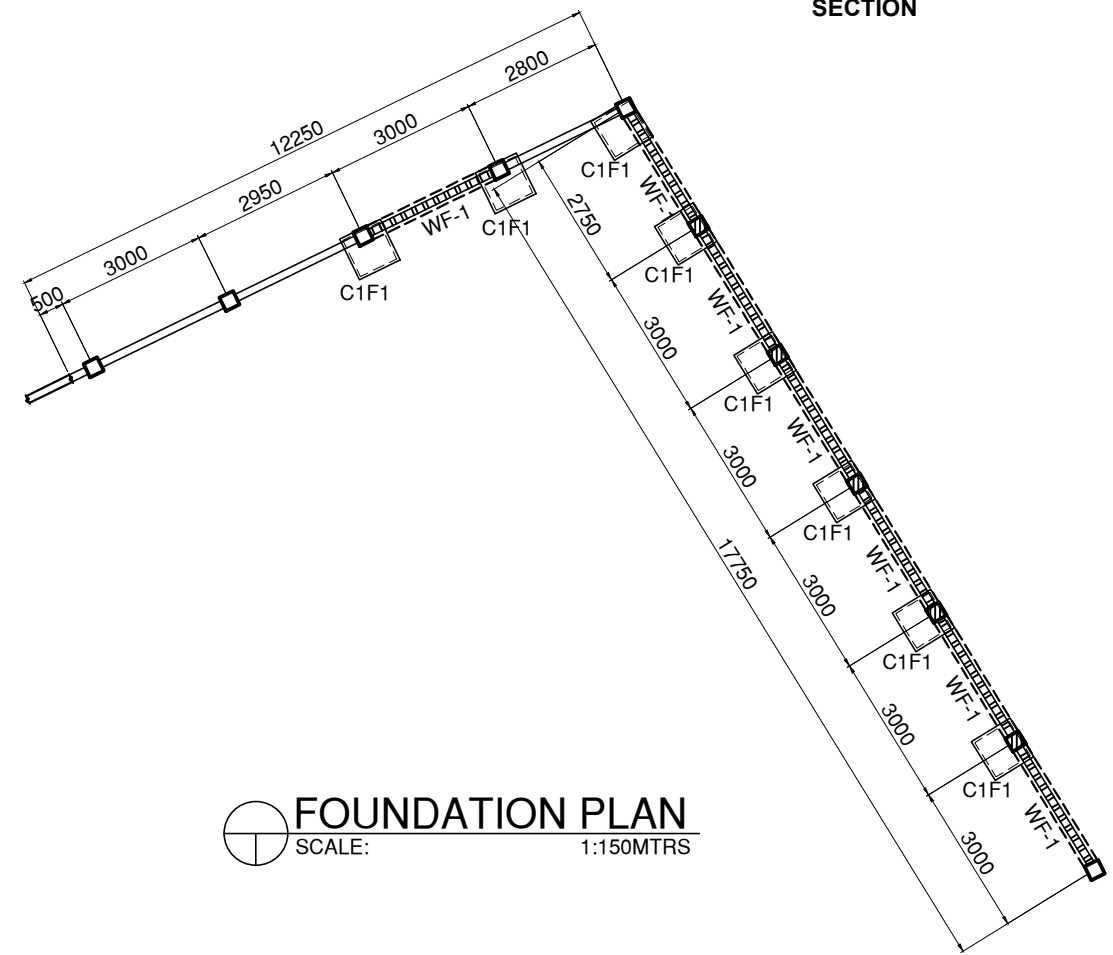
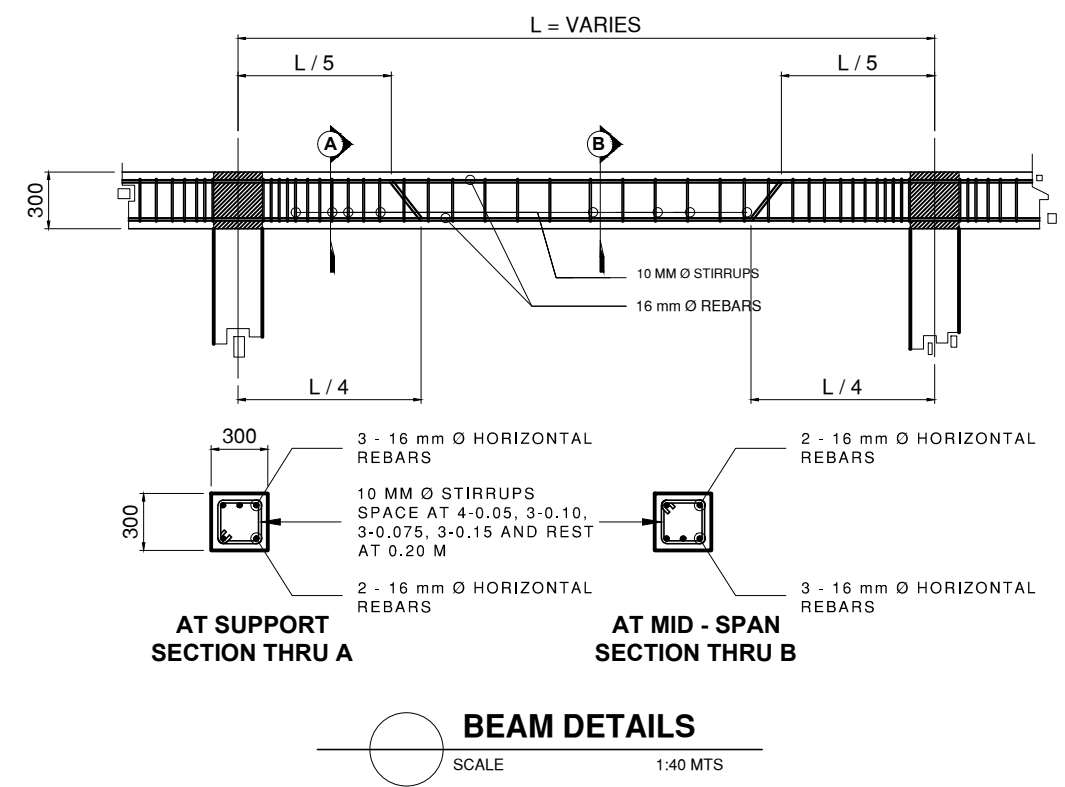
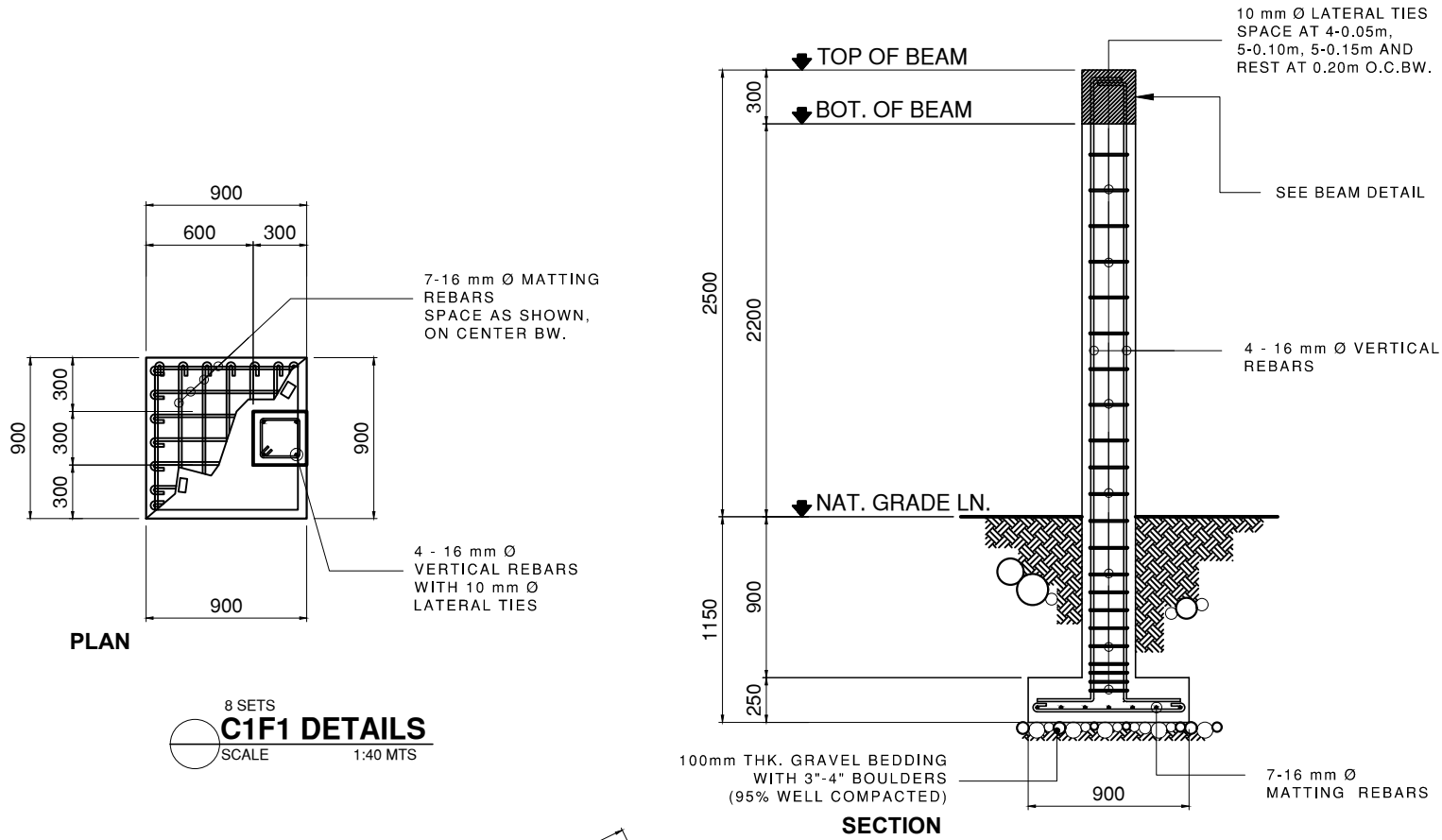
SEE FIG. 01 DETAILS



**PERIMETER FENCE ELEVATION**  
SCALE: 1:100MTRS

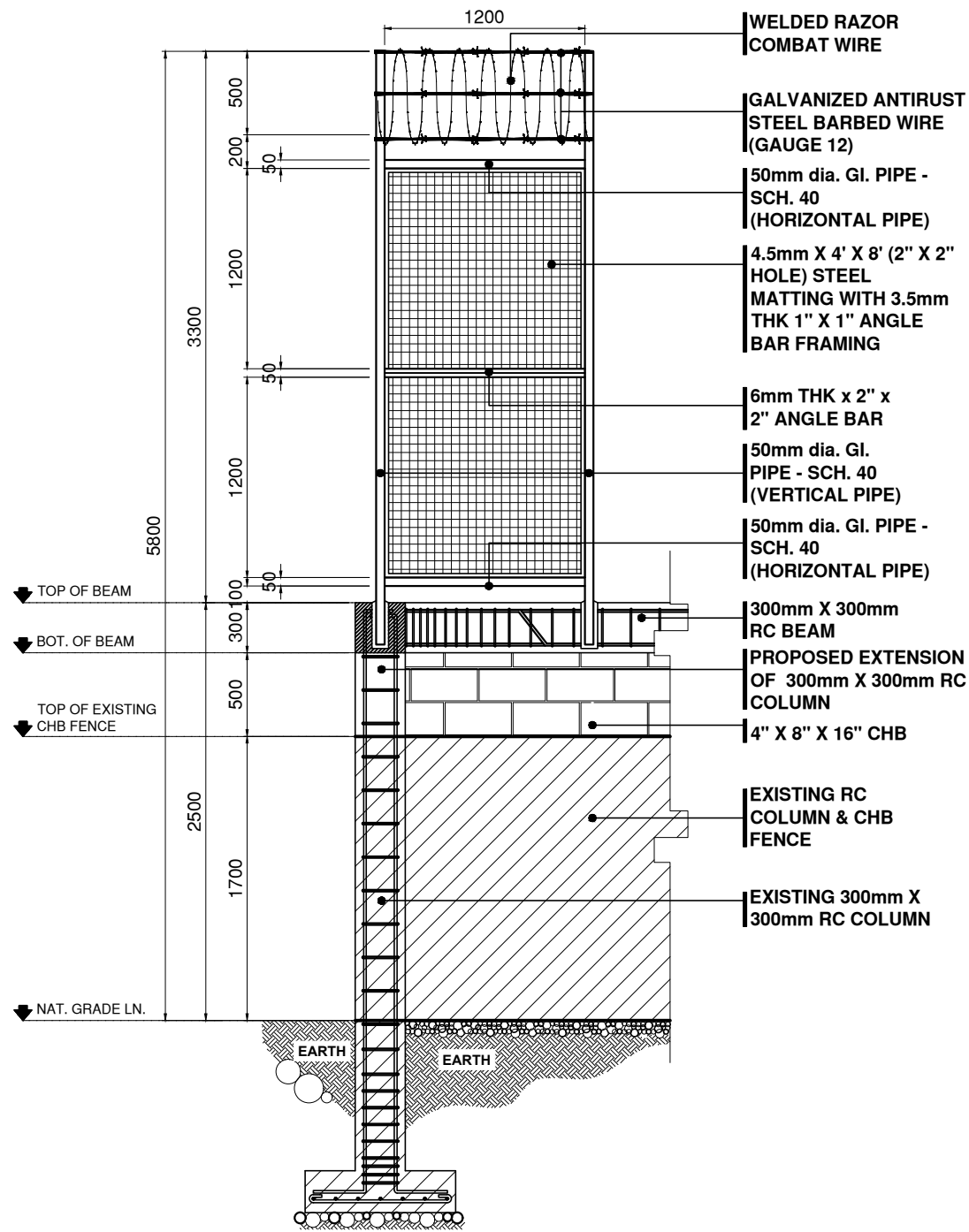


**PROPOSED PERIMETER FENCE AT CAMPUS-B**  
SCALE: 1:150MTRS

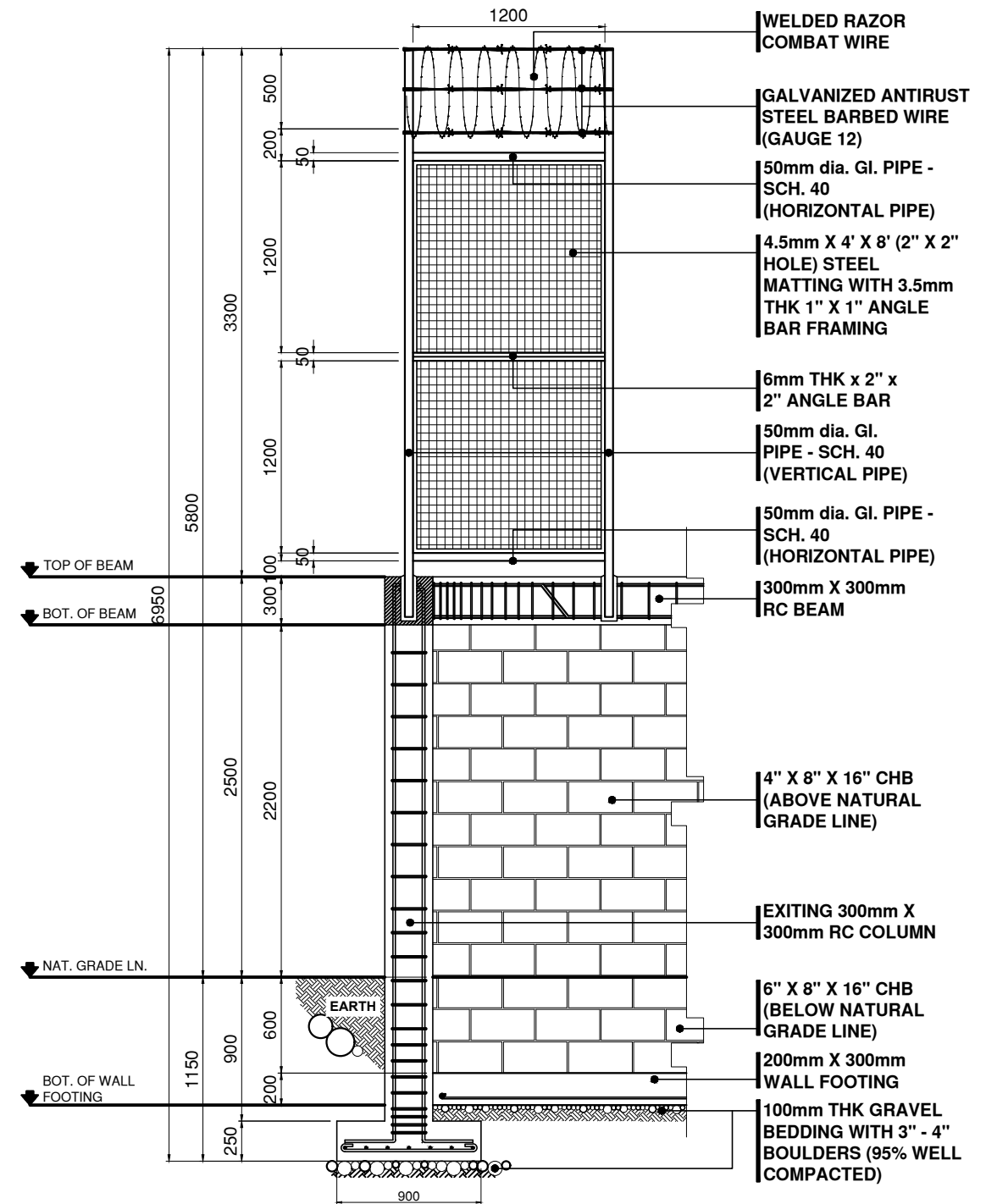
	DESIGNED BY:	PROJECT TITLE:	REQUISITIONER:	RECOMMENDING APPROVAL:	RECOMMENDING APPROVAL:	APPROVED BY:	SHEET CONTENTS	SHEET NO.
	ARCH. JOSEPH ANDREW L. SAHIAL UNIVERSITY ARCHITECT	<b>REPAIR OF PERIMETER FENCE AT WMSU CAMPUS A &amp; B</b>	<b>PHYSICAL PLANT AND ENGINEERING SERVICES</b>	ARCH. JOSEPH ANDREW L. SAHIAL DIRECTOR FOR PHYSICAL PLANT & ENGINEERING SERVICES	JOSELITO D. MADROÑAL, DPA VICE PRESIDENT FOR ADMINISTRATION AND FINANCE	MA. CARLA A. OCHOTORENA, RN, PhD UNIVERSITY PRESIDENT	-PROPOSED PERIMETER FENCE -PERIMETER FENCE ELEVATION -FIG.01 DETAILS DRAFTED BY:	<b>A4</b> <b>05/06</b>
PRC: 0010557    PTR: 2792209    TIN: 445-013-228	LOCATION: WMSU LOT-A&B, BARANGAY BALIWASAN, ZC		PRC: 0010557    PTR: 2792209    TIN: 445-013-228			C. VALDEZ		



	DESIGNED BY:	PROJECT TITLE:	REQUISITIONER:	RECOMMENDING APPROVAL:	RECOMMENDING APPROVAL:	APPROVED BY:	SHEET CONTENTS	SHEET NO.	
	ENGR. AHMEDZAM S. NASADUDDIN, MS. STE. TECHNICAL ASSOCIATE FOR INFRASTRUCTURE PRC: 0149752 PTR: TIN: 94972247	<b>REPAIR OF PERIMETER FENCE AT WMSU CAMPUS A &amp; B</b> LOCATION: WMSU LOT-A&B, BARANGAY BALIWASAN, ZC	<b>PHYSICAL PLANT AND ENGINEERING SERVICES</b>	ARCH. JOSEPH ANDREW L. SAHIAL DIRECTOR FOR PHYSICAL PLANT & ENGINEERING SERVICES PRC: 0010557 PTR: 2792209 TIN: 445-013-228	JOSELITO D. MADROÑAL, DPA VICE PRESIDENT FOR ADMINISTRATION AND FINANCE	MA. CARLA A. OCHOTORENA, RN, PhD UNIVERSITY PRESIDENT	-FOUNDATION PLAN -C1F1 DETAILS -BEAM DETAILS -FIG. 01 DETAILS -WF-1 DETAILS DRAFTED BY: REAGAN S. ABANTO	S1 05/06	



**SECTION-A**  
SCALE: 1:40MTRS



**SECTION-B**  
SCALE: 1:40MTRS



DESIGNED BY:  
**ENGR. AHMEDZAM S. NASALUDDIN, MS. STE.**  
TECHNICAL ASSOCIATE FOR INFRASTRUCTURE  
PRC: 0149752 PTR: TIN: 94972247

PROJECT TITLE:  
**REPAIR OF PERIMETER FENCE AT WMSU CAMPUS A & B**  
LOCATION: WMSU LOT-A&B, BARANGAY BALIWASAN, ZC

REQUISITIONER:  
**PHYSICAL PLANT AND ENGINEERING SERVICES**

RECOMMENDING APPROVAL:  
**ARCH. JOSEPH ANDREW L. SAHIAL**  
DIRECTOR FOR PHYSICAL PLANT & ENGINEERING SERVICES  
PRC: 0010557 PTR: 2792209 TIN: 445-013-228

RECOMMENDING APPROVAL:  
**JOSELITO D. MADROÑAL, DPA**  
VICE PRESIDENT FOR ADMINISTRATION AND FINANCE

APPROVED BY:  
**MA. CARLA A. OCHOTORENA, RN, PhD**  
UNIVERSITY PRESIDENT

SHEET CONTENTS  
SECTION A & B DETAILS  
DRAFTED BY:  
REAGAN S. ABANTO

SHEET NO.  
**S2**  
**0606**

