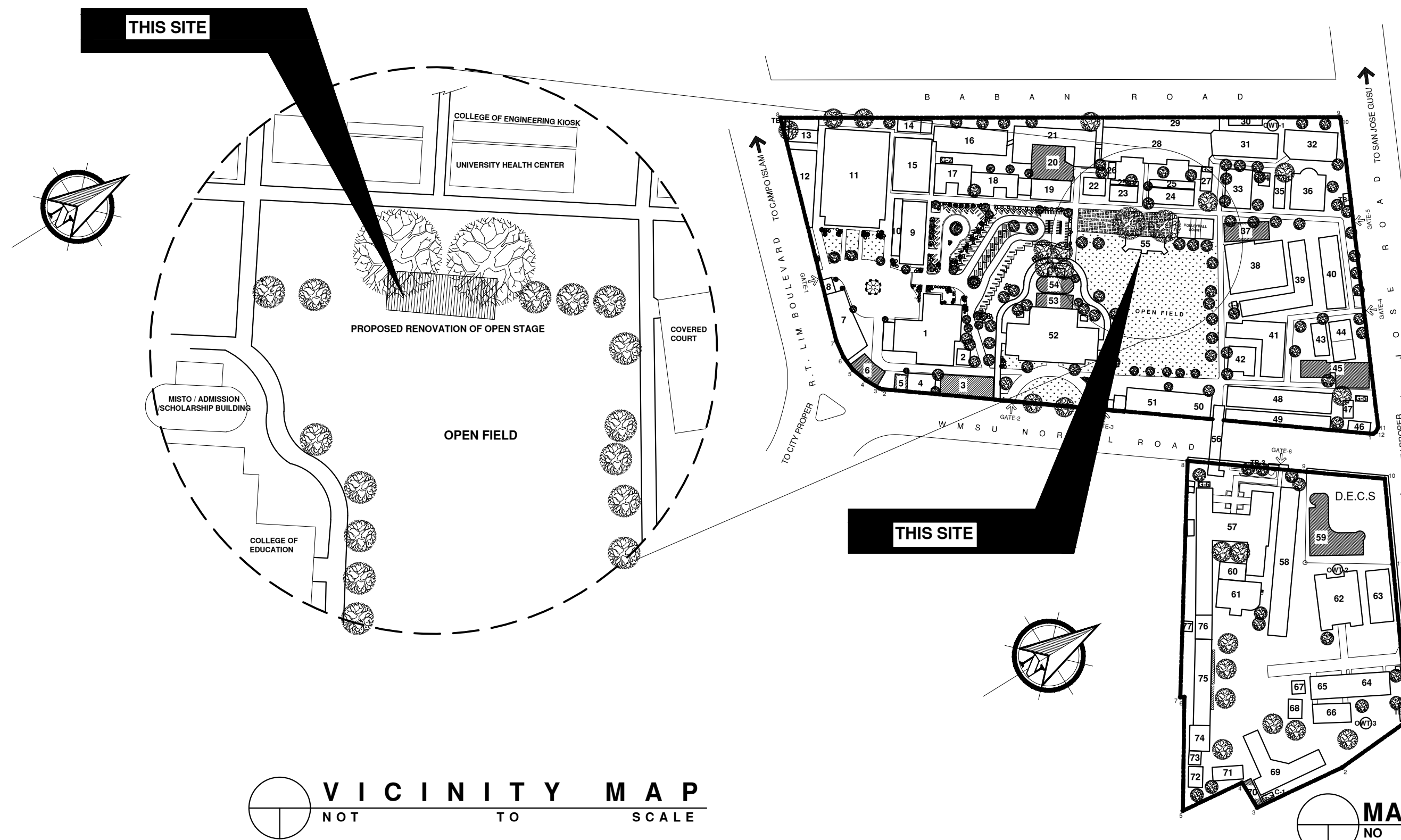




PERSPECTIVE
NO TO SCALE



VICINITY MAP
NOT TO SCALE

MASTER DEVELOPMENT PLAN
NO TO SCALE

LEGEND:

CAMPUS - A BUILDINGS		CAMPUS - B BUILDINGS	
1 ADMINISTRATION BUILDING	50 UNIVERSITY PRESS	57 COLLEGE OF SCIENCE AND MATHEMATICS	63 TRAINING CENTER BUILDING
2 CAMPUS MINISTRY OFFICE	51 UNIVERSITY GANTEEN	58 IL-HIGH SCHOOL BUILDING	64 COLLEGE OF MEDICINE BUILDING A
3 UNIVERSITY REGISTRAR BUILDING (PROPOSED)	52 COLLEGE OF TEACHERS EDUCATION	59 COLLEGE OF MEDICINE BUILDING (PROPOSED)	65 COLLEGE OF MEDICINE BUILDING B
4 BARCODE RESTAURANT	53 RENOVATION OF AZOTEA (PROPOSED)	66 HIGH SCHOOL PRACTICAL ARTS BUILDING	67 COLLEGE OF SOCIAL WELFARE & DEVELOPMENT BLDG
5 WMSU COOPERATIVE BUILDING (PROPOSED)	54 COMFORT ROOM & STUDENT COMPUTER CENTER (PROPOSED)	68 COLLEGE OF ENGINEERING & TECHNOLOGY (NEW BUILDING)	68 COLLEGE OF SOCIAL WELFARE & DEVELOPMENT BLDG
6 SMART BUILDING (PROPOSED)	55 OPEN STAGE	69 COLLEGE OF ENGINEERING & TECHNOLOGY (NEW BUILDING)	69 COLLEGE OF SOCIAL WELFARE & DEVELOPMENT BLDG
7 MOTORPOOL/ PHYSICAL PLANT & ENGINEERING SERVICES	56 PEDESTRIAN OVERPASS (FROM CAMPUS A TO B)	70 COLLEGE OF LIBERAL ARTS BUILDING	70 COLLEGE OF SOCIAL WELFARE & DEVELOPMENT BLDG
8 SECURITY OFFICE GUARD HOUSE		71 MUSLIM STUDENT AFFAIR BLDG	71 COLLEGE OF SOCIAL WELFARE & DEVELOPMENT BLDG
9 UNIVERSITY LIBRARY		72 SCIENCE & TECHNOLOGY HUB	72 COLLEGE OF SOCIAL WELFARE & DEVELOPMENT BLDG
10 EXECUTIVE COVERED PARKING		73 MULTIPURPOSE STUDENT CENTER (PROPOSED)	73 COLLEGE OF SOCIAL WELFARE & DEVELOPMENT BLDG
11 UNIVERSITY GYMNASIUM		74 DAY CARE & RESOURCE CENTER	74 COLLEGE OF SOCIAL WELFARE & DEVELOPMENT BLDG
12 PROPERTY MANAGEMENT OFFICE STORAGE FACILITIES		75 ANKAYAN BLDG	75 COLLEGE OF SOCIAL WELFARE & DEVELOPMENT BLDG
13 STORAGE BUILDING FOR DIFFERENT OFFICES		76 STUDENT KIOSK (CSWD)	76 COLLEGE OF SOCIAL WELFARE & DEVELOPMENT BLDG
14 STORAGE BUILDING FOR DIFFERENT OFFICES		77 COLLEGE OF ASIAN AND ISLAMIC STUDIES	77 COLLEGE OF SOCIAL WELFARE & DEVELOPMENT BLDG
15 EXECUTIVE BUILDING		78 CSM-LECTURE ROOM	78 COLLEGE OF SOCIAL WELFARE & DEVELOPMENT BLDG
16 COLLEGE OF LIBERAL ARTS - ANNEX BUILDING		79 MALE AND FEMALE COMFORT ROOM	79 COLLEGE OF SOCIAL WELFARE & DEVELOPMENT BLDG
17 RESEARCH CENTER BUILDING			79 COLLEGE OF SOCIAL WELFARE & DEVELOPMENT BLDG
18 COLLEGE OF LAW			79 COLLEGE OF SOCIAL WELFARE & DEVELOPMENT BLDG
19 COLLEGE OF PUBLIC ADMINISTRATION BUILDING			79 COLLEGE OF SOCIAL WELFARE & DEVELOPMENT BLDG
20 CLA GRADUATE PROGRAM BUILDING (PROPOSED)			79 COLLEGE OF SOCIAL WELFARE & DEVELOPMENT BLDG
21 COLLEGE OF LIBERAL ARTS BUILDING			79 COLLEGE OF SOCIAL WELFARE & DEVELOPMENT BLDG
22 STUDENT CENTER (PROPOSED)			79 COLLEGE OF SOCIAL WELFARE & DEVELOPMENT BLDG
23 UNIVERSITY HEALTH CENTER			79 COLLEGE OF SOCIAL WELFARE & DEVELOPMENT BLDG
24 COLLEGE OF TEACHER EDUCATION - SPED BUILDING			79 COLLEGE OF SOCIAL WELFARE & DEVELOPMENT BLDG
25 CET KIOSK			79 COLLEGE OF SOCIAL WELFARE & DEVELOPMENT BLDG
26 CET OPEN STAGE			79 COLLEGE OF SOCIAL WELFARE & DEVELOPMENT BLDG
27 ENGINEERING INNOVATION CENTER			79 COLLEGE OF SOCIAL WELFARE & DEVELOPMENT BLDG
28 COLLEGE OF ENGINEERING & TECHNOLOGY (NEW BUILDING)			79 COLLEGE OF SOCIAL WELFARE & DEVELOPMENT BLDG
29 CET- ME LABORATORY ROOM			79 COLLEGE OF SOCIAL WELFARE & DEVELOPMENT BLDG
30 CET- CLASSROOM			79 COLLEGE OF SOCIAL WELFARE & DEVELOPMENT BLDG
31 COLLEGE OF ENGINEERING & TECHNOLOGY (OLD BUILDING)			79 COLLEGE OF SOCIAL WELFARE & DEVELOPMENT BLDG
32 COLLEGE OF ARCHITECTURE BUILDING			79 COLLEGE OF SOCIAL WELFARE & DEVELOPMENT BLDG
33 STORAGE BUILDING			79 COLLEGE OF SOCIAL WELFARE & DEVELOPMENT BLDG
34 COLLEGE OF ARCHITECTURE STUDENT KIOSK			79 COLLEGE OF SOCIAL WELFARE & DEVELOPMENT BLDG
35 ELEMENTARY-ILS MULTIPURPOSE BLDG.			79 COLLEGE OF SOCIAL WELFARE & DEVELOPMENT BLDG
36 ELEMENTARY-ILS PRINCIPAL'S OFFICE			79 COLLEGE OF SOCIAL WELFARE & DEVELOPMENT BLDG
37 MARTIAL ARTS BUILDING (PROPOSED)			79 COLLEGE OF SOCIAL WELFARE & DEVELOPMENT BLDG
38 COVERED COURT			79 COLLEGE OF SOCIAL WELFARE & DEVELOPMENT BLDG
39 ELEMENTARY-ILS BUILDING			79 COLLEGE OF SOCIAL WELFARE & DEVELOPMENT BLDG
40 ELEMENTARY-ILS BUILDING (NEW BUILDING)			79 COLLEGE OF SOCIAL WELFARE & DEVELOPMENT BLDG
41 COLLEGE OF HOME ECONOMICS AND DIETARY BUILDING			79 COLLEGE OF SOCIAL WELFARE & DEVELOPMENT BLDG
42 UNIVERSITY HOSTEL BUILDING			79 COLLEGE OF SOCIAL WELFARE & DEVELOPMENT BLDG
43 EXTENSION TRAINING LABORATORY (TESDA BUILDING)			79 COLLEGE OF SOCIAL WELFARE & DEVELOPMENT BLDG
44 BUILDING UTILISE BY LANDBANK			79 COLLEGE OF SOCIAL WELFARE & DEVELOPMENT BLDG
45 SCHOOL GOVERNANCE BUILDING (PROPOSED)			79 COLLEGE OF SOCIAL WELFARE & DEVELOPMENT BLDG
46 ALUMNI BUILDING			79 COLLEGE OF SOCIAL WELFARE & DEVELOPMENT BLDG
47 COLLEGE OF NURSING STUDENT CENTER			79 COLLEGE OF SOCIAL WELFARE & DEVELOPMENT BLDG
48 COLLEGE OF NURSING BUILDING			79 COLLEGE OF SOCIAL WELFARE & DEVELOPMENT BLDG
49 COLLEGE OF NURSING BUILDING (ANNEX BUILDING)			79 COLLEGE OF SOCIAL WELFARE & DEVELOPMENT BLDG
50 UNIVERSITY PRESS			79 COLLEGE OF SOCIAL WELFARE & DEVELOPMENT BLDG

NOTE: ALL BUILDINGS/ STRUCTURES AT THE COLLEGE OF AGRICULTURE & COLLEGE OF FORESTRY & ENVIRONMENTAL STUDIES UNDER ZONE-3

TABLE OF CONTENTS

SHEET NO.	CONTENTS
A01-01	-PERSPECTIVE -MASTER DEVELOPMENT PLAN -VICINITY MAP
A02-02	-WORK PLAN
A03-03	-OPEN STAGE FLOOR PLAN
A04-04	-FRONT ELEVATION -REAR ELEVATION
A05-05	-LEFT SIDE ELEVATION -RIGHT SIDE ELEVATION -BACK DROP PLAN -ISOMETRIC DIAGRAM -BLOW-UP DETAILS
A06-06	-ROOF PLAN
S01-07	-FOUNDATION PLAN -WALL FOOTING DETAILS -ZOCALO 1 FOOTING DETAILS -ZOCALO 2 FOOTING DETAILS -RAILING DETAILS
S02-08	-RAMP PLAN -RAMP SECTION -BLOW-UP DETAILS -STEPS PLAN -STEPS SECTION -RAMP PERSPECTIVE
S03-09	-ROOF FRAMING LAYOUT PLAN -PURLINS CONNECTION DETAILS
E01-10	-LIGHTING LAYOUT PLAN -LEGEND S
E02-11	-POWER LAYOUT PLAN -LEGEND S
E03-12	-LOAD ANALYSIS -RISER DIAGRAM -THREE LINE DIAGRAM -GENERAL NOTES -VICINITY MAP

DPWH
OFFICE OF THE BUILDING OFFICIALS
ZAMBOANGA CITY

LAND USE AND ZONING

LINE AND GRADE

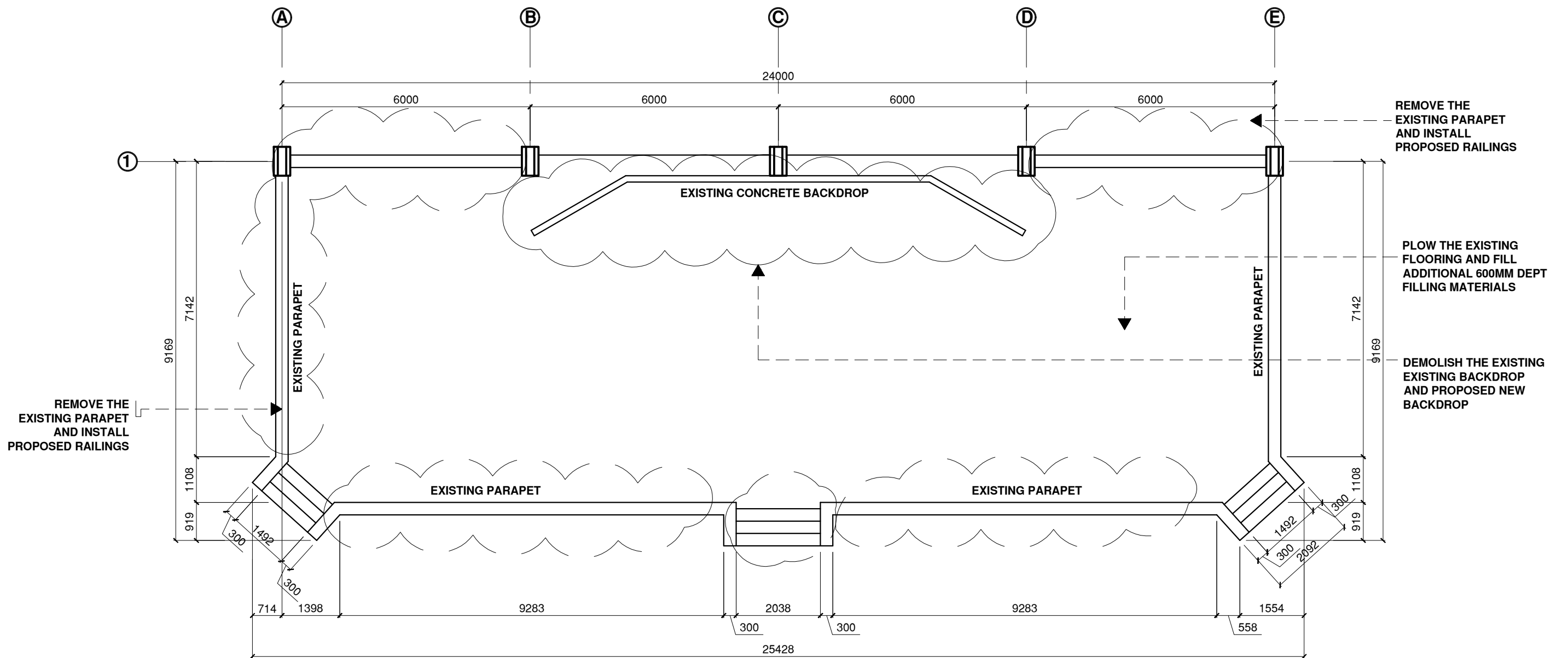
ARCHITECTURAL

STRUCTURAL

SANITARY

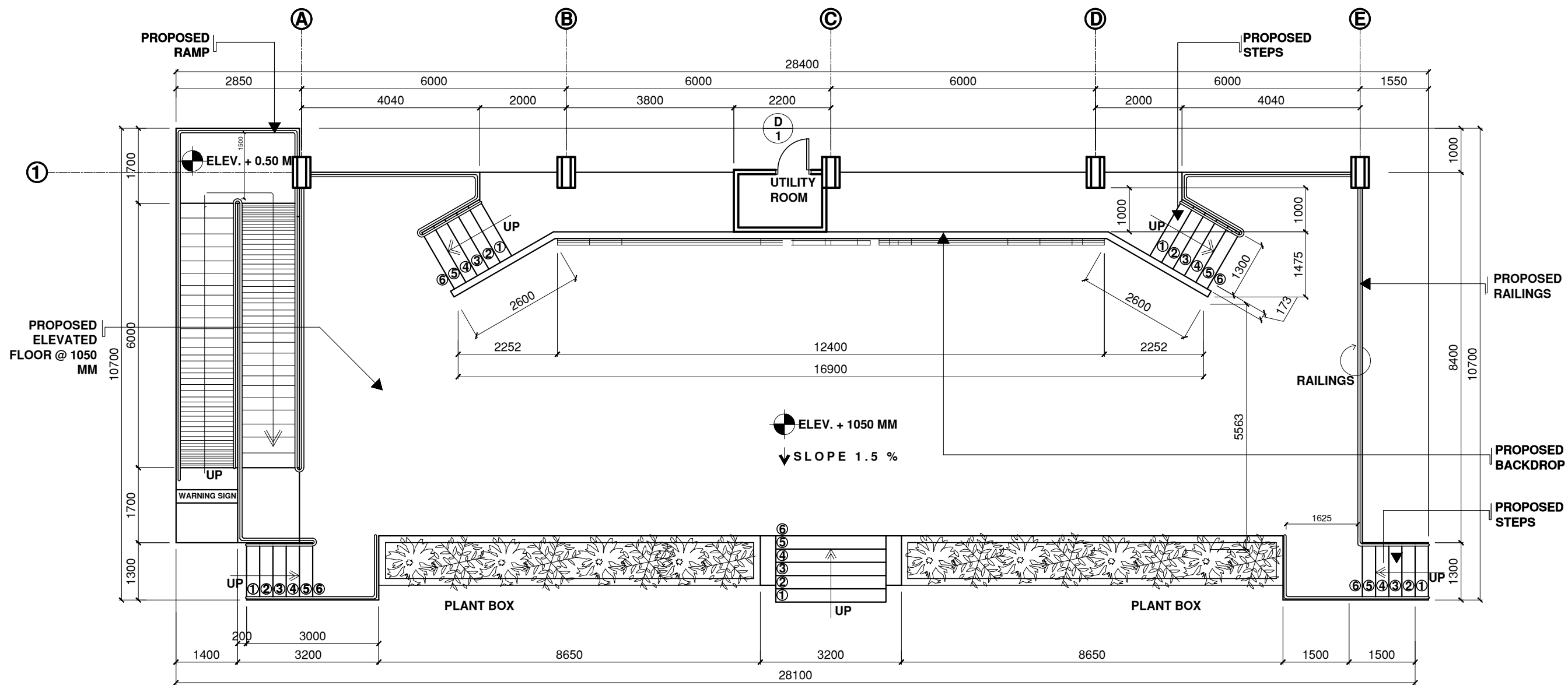
ELECTRICAL

	DESIGNED BY: ARCH. JOSEPH ANDREW L. SAHIAL, uap UNIVERSITY ARCHITECT	PROJECT TITLE: PROPOSED REPAIR AND RENOVATION OF W.M.S.U. OPEN STAGE	REQUISITIONER: ARCH. JOSEPH ANDREW L. SAHIAL, uap DIRECTOR OF PHYSICAL PLANT AND ENGINEERING SERVICES	RECOMMENDING APPROVAL: ARCH. JOSEPH ANDREW L. SAHIAL, uap DIRECTOR OF PHYSICAL PLANT AND ENGINEERING SERVICES	RECOMMENDING APPROVAL: DR. JOSELITO D. MADRONAL VICE PRESIDENT FOR ADMIN AND FINANCE	APPROVED BY: DR. MA. CARLA C. OCHOTORENA WMSU-PRESIDENT	SHEET CONTENTS PERSPECTIVE -MASTER DEVELOPMENT PLAN -VICINITY MAP	SHEET NO. A01 0112	
	PRC: 0030703 PTR: 2559115 TIN: 263949012	LOCATION: WMSU LOT-1, ZAMBOANGA CITY		PRC: 0010577 PTR: 2559115 TIN: 445013228			DRAFTED BY: PRRC		





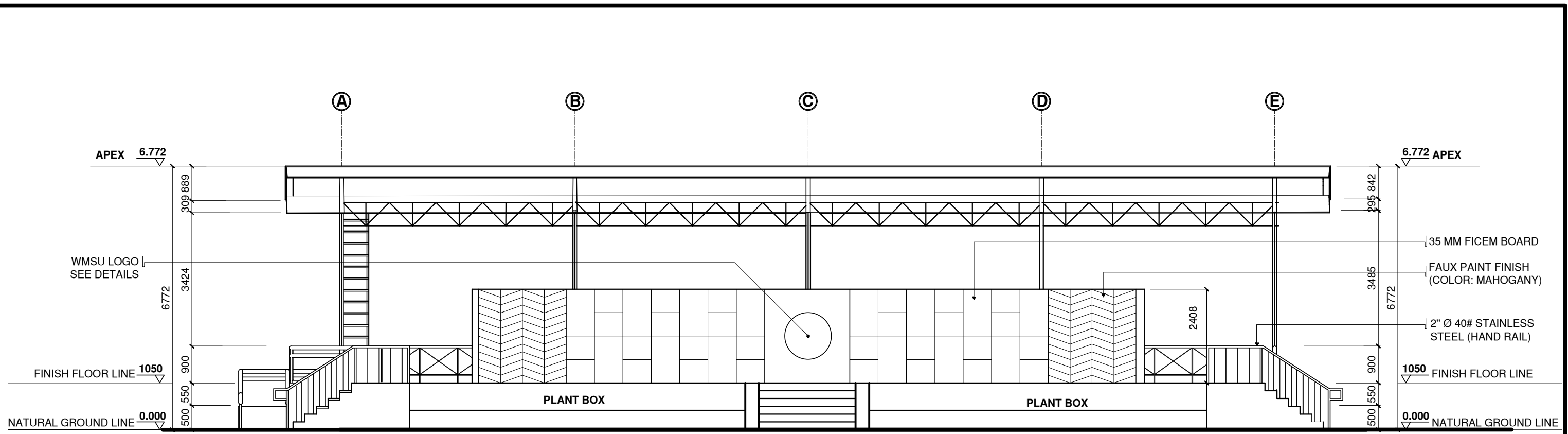
EXISTING OPEN STAGE PLAN
 SCALE: 1:100M

	DESIGNED BY:	PROJECT TITLE:	REQUISITIONER	RECOMMENDING APPROVAL	RECOMMENDING APPROVAL	APPROVED BY:	SHEET CONTENTS	SHEET NO.
	 ARCH. JOSEPH ANDREW L. SAHIAL, uap UNIVERSITY ARCHITECT	PROPOSED REPAIR AND RENOVATION OF W.M.S.U. OPEN STAGE	 ARCH. JOSEPH ANDREW L. SAHIAL, uap DIRECTOR OF PHYSICAL PLANT AND ENGINEERING SERVICES	 ARCH. JOSEPH ANDREW L. SAHIAL, uap DIRECTOR OF PHYSICAL PLANT AND ENGINEERING SERVICES	 DR. JOSELITO D. MADROÑAL VICE PRESIDENT FOR ADMIN AND FINANCE	 DR. MA. CARLA V. OCHOTORENA WMSU-PRESIDENT	-WORK PLAN	
	PRC: 0010577 PTR: 2559115 TIN: 445013228	LOCATION: WMSU LOT-A, NORMAL ROAD BALIWASAN ZAMBOANGA CITY	PRC: 0010577 PTR: 2559115 TIN: 445013228	PRC: 0010577 PTR: 2559115 TIN: 445013228	PRC: 0010577 PTR: 2559115 TIN: 445013228	P.R.R.C	DRAFTED BY:	Effective Date: 08 - Sept.-2021

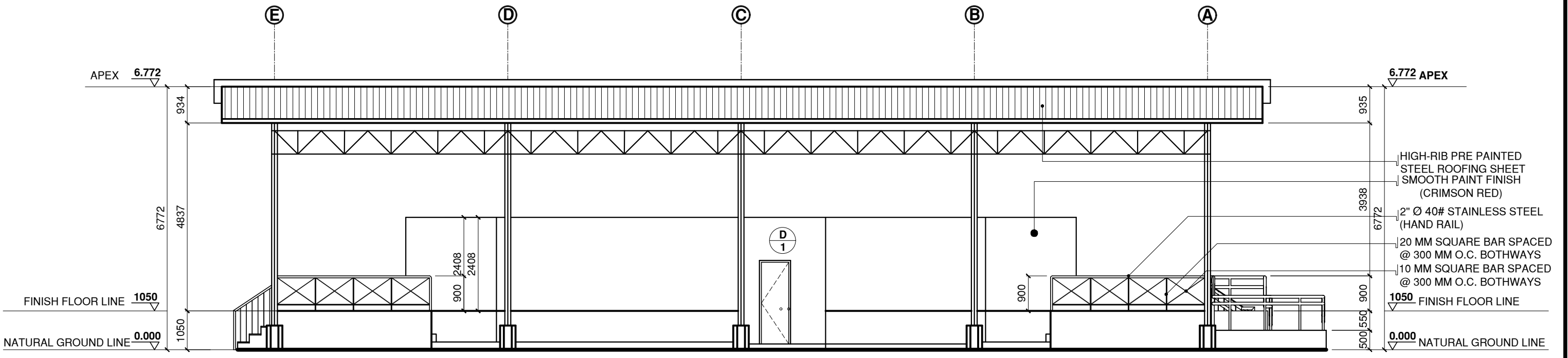



PROPOSED OPEN STAGE PLAN
 SCALE: 1:100M

	DESIGNED BY:	PROJECT TITLE:	REQUISITIONER	RECOMMENDING APPROVAL	RECOMMENDING APPROVAL	APPROVED BY:	SHEET CONTENTS	SHEET NO.	
	ARCH. JOSEPH ANDREW L. SAHIAL,uap UNIVERSITY ARCHITECT	PROPOSED REPAIR AND RENOVATION OF W.M.S.U. OPEN STAGE	ARCH. JOSEPH ANDREW L. SAHIAL,uap DIRECTOR OF PHYSICAL PLANT AND ENGINEERING SERVICES	ARCH. JOSEPH ANDREW L. SAHIAL,uap DIRECTOR OF PHYSICAL PLANT AND ENGINEERING SERVICES	DR. JOSELI TO D. MADROÑAL VICE PRESIDENT FOR ADMIN AND FINANCE	DR. MA. CARLA A. OCHOTORENA WMSU-PRESIDENT	PROPOSED OPEN STAGE PLAN DRAFTED BY:	A03 0312	
PRC: 0010577 PTR: 2559115 TIN: 445013228	LOCATION: WMSU LOT-A, NORMAL ROAD BALIWASAN ZAMBOANGA CITY	PRC: 0010577 PTR: 2559115 TIN: 445013228	PRC: 0010577 PTR: 2559115 TIN: 445013228	PRC: 0010577 PTR: 2559115 TIN: 445013228	PRC: 0010577 PTR: 2559115 TIN: 445013228	P.R.R.C			

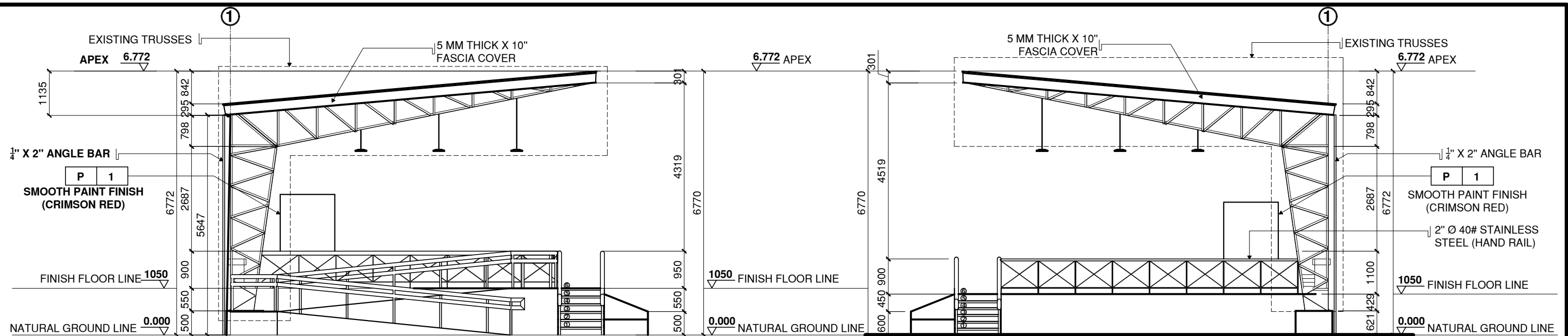


FRONT ELEVATION
 SCALE: 1:100M



REAR ELEVATION
 SCALE: 1:100M

	DESIGNED BY:	PROJECT TITLE:	REQUISITIONER	RECOMMENDING APPROVAL	RECOMMENDING APPROVAL	APPROVED BY:	SHEET CONTENTS	SHEET NO.		
	 ARCH. JOSEPH ANDREW L. SAHIAL, uap <small>UNIVERSITY ARCHITECT</small>	PROPOSED REPAIR AND RENOVATION OF W.M.S.U. OPEN STAGE	 ARCH. JOSEPH ANDREW L. SAHIAL, uap <small>DIRECTOR OF PHYSICAL PLANT AND ENGINEERING SERVICES</small>	 ARCH. JOSEPH ANDREW L. SAHIAL, uap <small>DIRECTOR OF PHYSICAL PLANT AND ENGINEERING SERVICES</small>	 DR. JOSELITO D. MADROÑAL <small>VICE PRESIDENT FOR ADMIN AND FINANCE</small>	 DR. MA. CARLA A. OCHOTORENA <small>WMSU-PRESIDENT</small>	FRONT ELEVATION REAR ELEVATION	A04 0412		<small>WMSU-PPES-2023-01</small> <small>Effective Date: 08 - Sept.-2021</small>
	<small>PRC: 0010577 PTR: 2559115 TIN: 445013228</small>	<small>LOCATION: WMSU LOT-A, NORMAL ROAD BALIWASAN ZAMBOANGA CITY</small>	<small>PRC: 0010577 PTR: 2559115 TIN: 445013228</small>	<small>PRC: 0010577 PTR: 2559115 TIN: 445013228</small>	<small>PRC: 0010577 PTR: 2559115 TIN: 445013228</small>	<small>PRC: 0010577 PTR: 2559115 TIN: 445013228</small>	<small>DRAFTED BY:</small> <small>P.R.R.C</small>	<small>AB</small> <small>Associated General Contractors of the Philippines</small>		

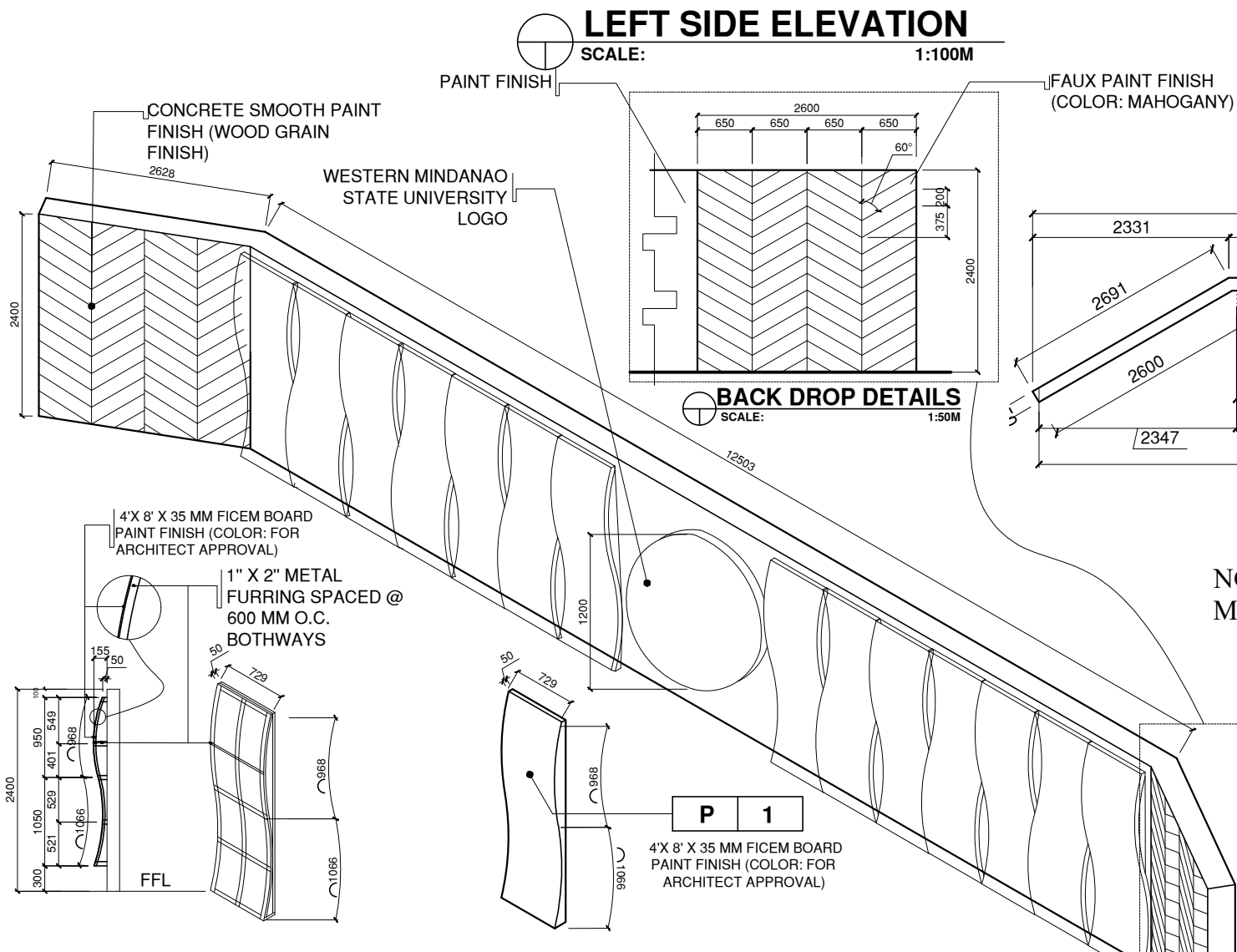


LEFT SIDE ELEVATION

SCALE: 1:100M

RIGHT SIDE ELEVATION

SCALE: 1:100M

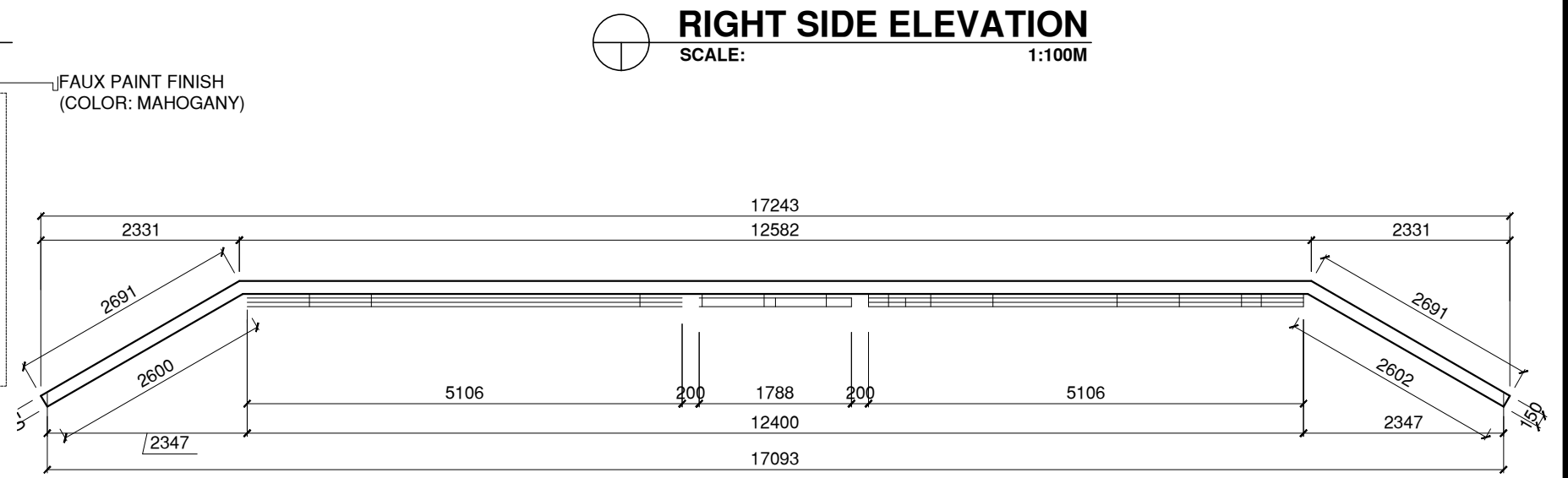


BACK DROP DETAILS

SCALE: 1:50M

BACKDROP ISOMETRIC DIAGRAM

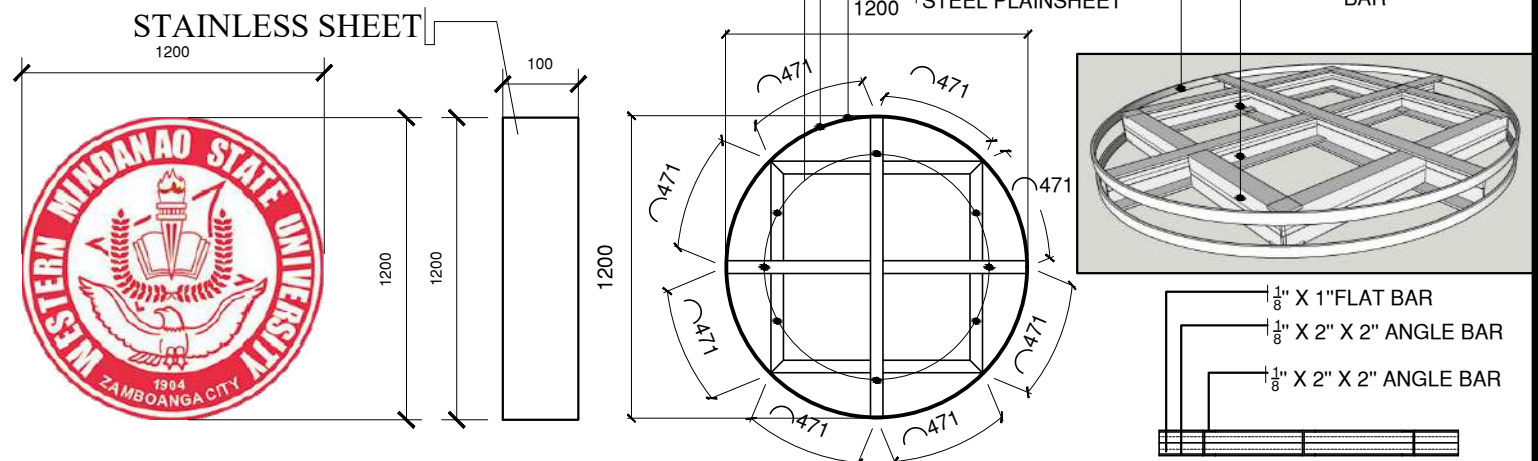
SCALE: 1:50M



BACK DROP PLAN

SCALE: 1:75M

NOTE :
MATT PAINT MUST BE USED FOR WMSU LOGO



BLOW-UP DETAILS

SCALE: 1:25MTRS

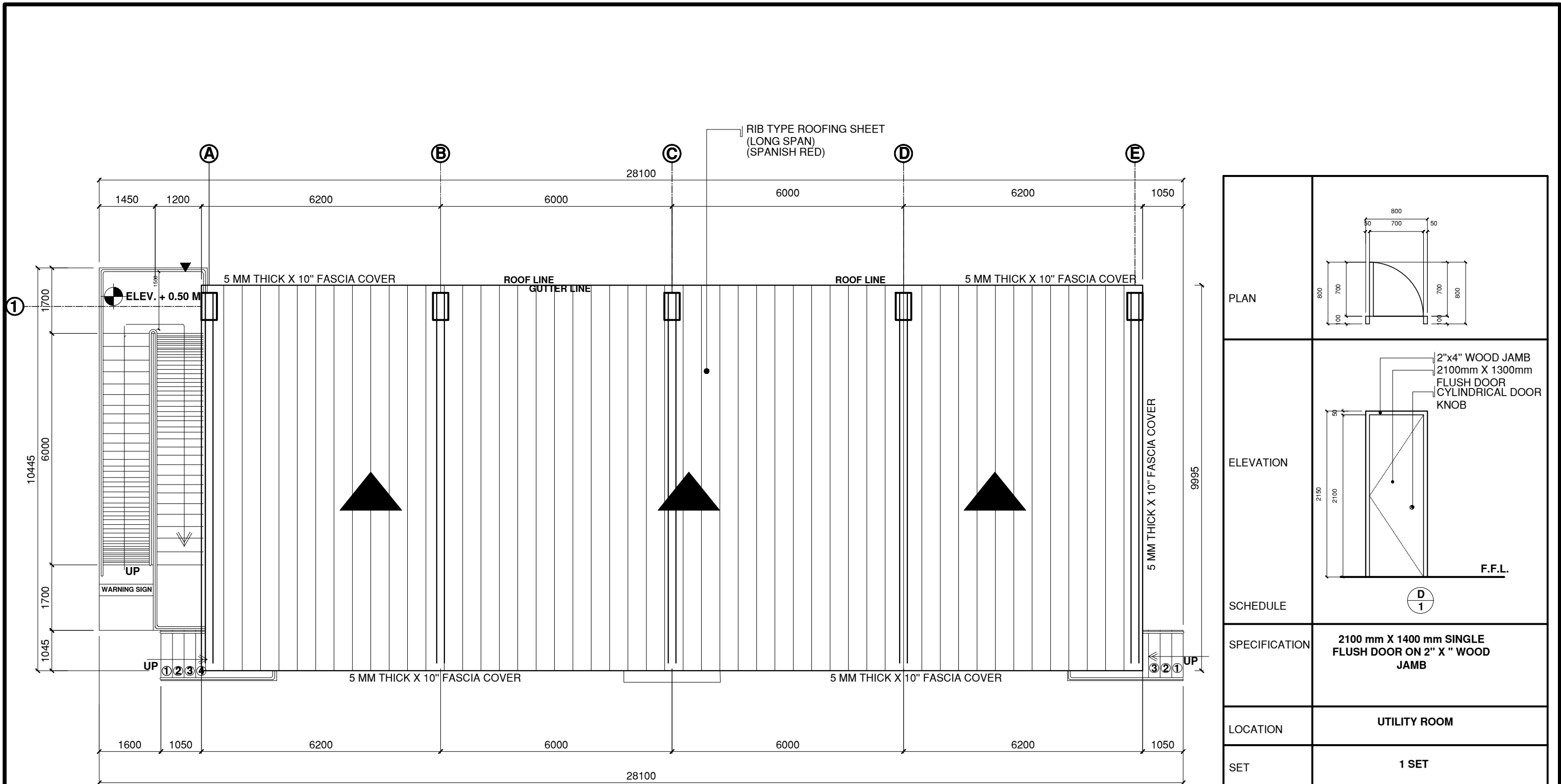
CONNECTION DETAIL

SCALE: 1:30MTRS

SECTION DETAIL

SCALE: 1:30MTRS

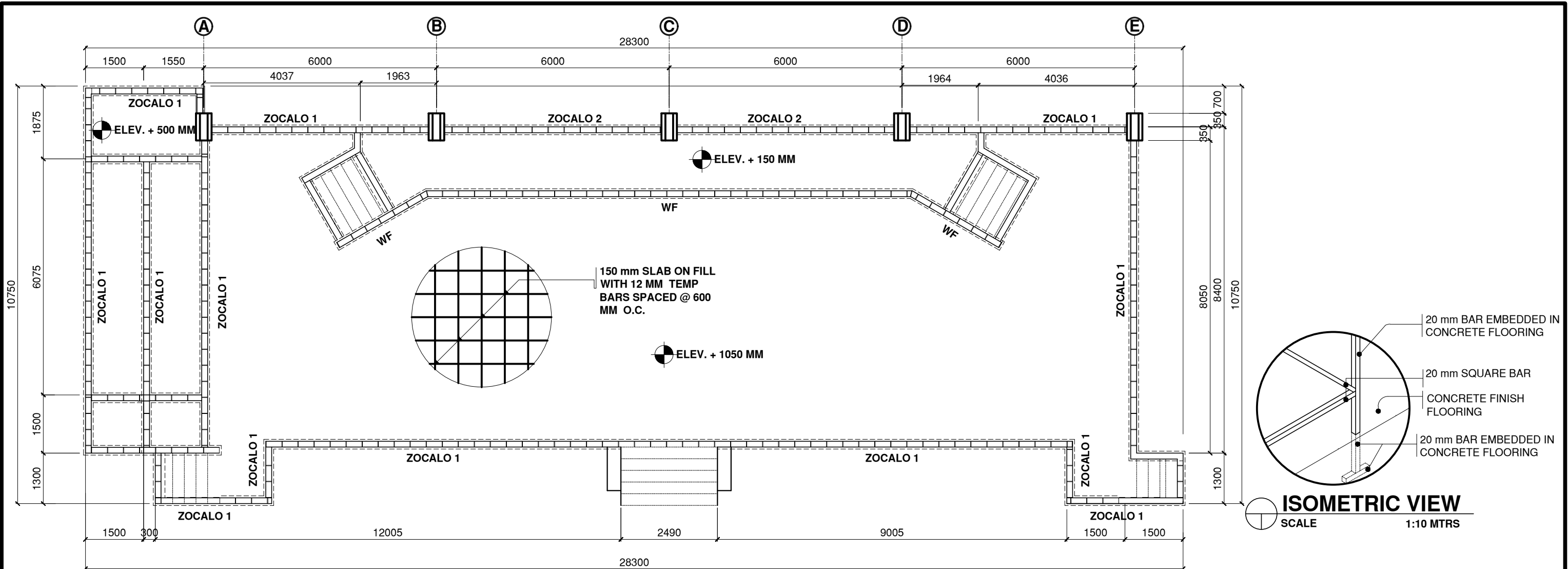
	DESIGNED BY:	PROJECT TITLE:	REQUISITIONER	RECOMMENDING APPROVAL	RECOMMENDING APPROVAL	APPROVED BY:	SHEET CONTENTS	SHEET NO.	
	 ARCH. JOSEPH ANDREW L. SAHIAL, uap UNIVERSITY ARCHITECT	PROPOSED REPAIR AND RENOVATION OF W.M.S.U. OPEN STAGE	 ARCH. JOSEPH ANDREW L. SAHIAL, uap DIRECTOR OF PHYSICAL PLANT AND ENGINEERING SERVICES	 ARCH. JOSEPH ANDREW L. SAHIAL, uap DIRECTOR OF PHYSICAL PLANT AND ENGINEERING SERVICES	 DR. JOSE LITO D. MADROÑAL VICE PRESIDENT FOR ADMIN AND FINANCE	 DR. MA. CARLA A. OCHOTORENA WMSU-PRESIDENT	-LEFT SIDE ELEVATION -RIGHT SIDE ELEVATION -BACK DROP PLAN -ISOMETRIC DIAGRAM -BLOW-UP DETAILS -WMSU LOGO DETAILS DRAFTED BY:	A05 0512	
PRC: 0010577 PTR: 2559115 TIN: 445013228	LOCATION: WMSU LOT-A, NORMAL ROAD BALIWASAN ZAMBOANGA CITY	PRC: 0010577 PTR: 2559115 TIN: 445013228	PRC: 0010577 PTR: 2559115 TIN: 445013228	PRC: 0010577 PTR: 2559115 TIN: 445013228	PRC: 0010577 PTR: 2559115 TIN: 445013228	P.R.C			



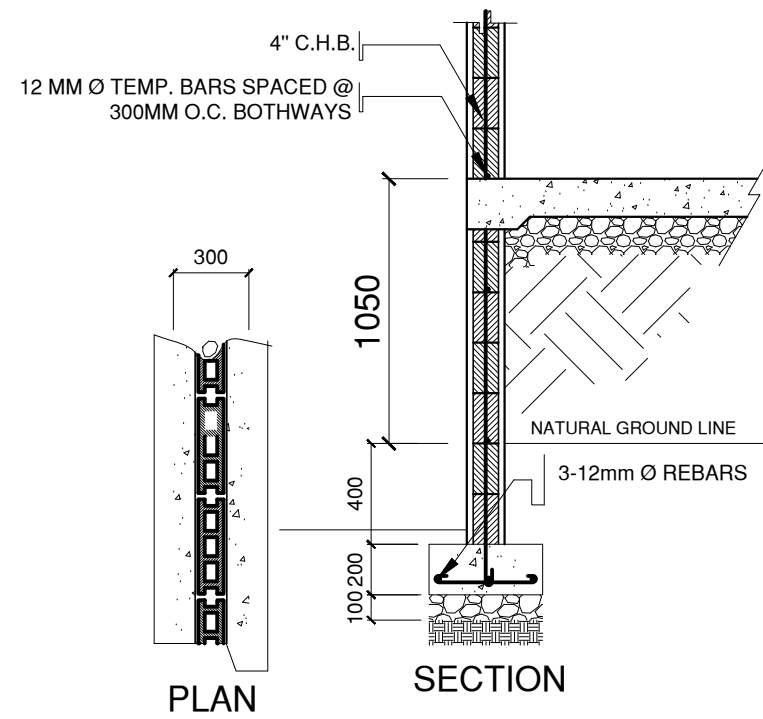
R O O F P L A N
 SCALE: 1:100M

PLAN	
ELEVATION	
SCHEDULE	
SPECIFICATION	2100 mm X 1400 mm SINGLE FLUSH DOOR ON 2" X " WOOD JAMB
LOCATION	UTILITY ROOM
SET	1 SET

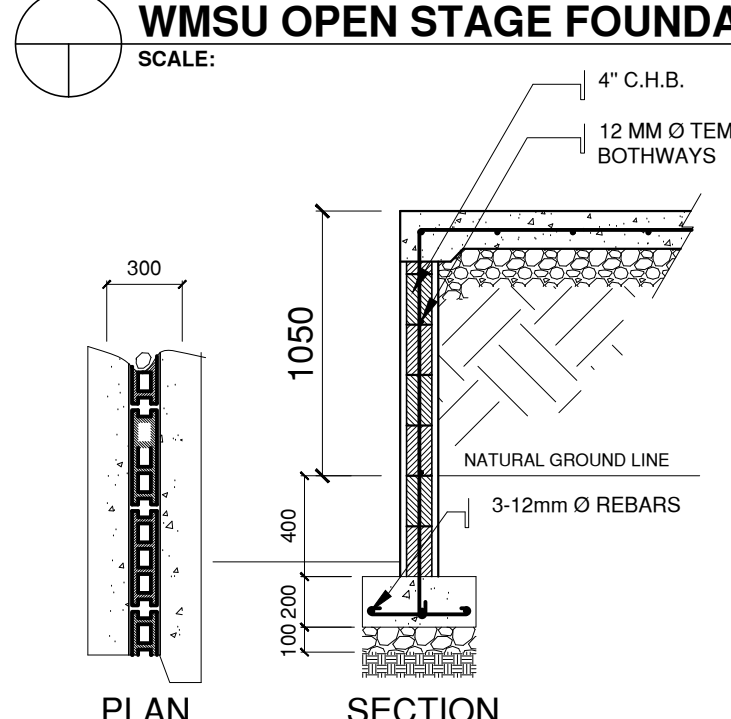
	DESIGNED BY:	PROJECT TITLE:	REQUISITIONER	RECOMMENDING APPROVAL	RECOMMENDING APPROVAL	APPROVED BY:	SHEET CONTENTS	SHEET NO.
	 ARCH. JOSEPH ANDREW L. SAHIAL, uap UNIVERSITY ARCHITECT	PROPOSED REPAIR AND RENOVATION OF W.M.S.U. OPEN STAGE	 ARCH. JOSEPH ANDREW L. SAHIAL, uap DIRECTOR OF PHYSICAL PLANT AND ENGINEERING SERVICES	 ARCH. JOSEPH ANDREW L. SAHIAL, uap DIRECTOR OF PHYSICAL PLANT AND ENGINEERING SERVICES	 DR. JOSELITO D. MADROÑAL VICE PRESIDENT FOR ADMIN AND FINANCE	 DR. MA. CARLA A. OCHOTORENA WMSU RESIDENT	-ROOF PLAN DRAFTED BY: P.R.R.C	
PRC: 0010577 PTR: 2559115 TIN: 445013228	LOCATION: WMSU LOT-A, NORMAL ROAD BALIWASAN ZAMBOANGA CITY		PRC: 0010577 PTR: 2559115 TIN: 445013228	PRC: 0010577 PTR: 2559115 TIN: 445013228	PRC: 0010577 PTR: 2559115 TIN: 445013228			



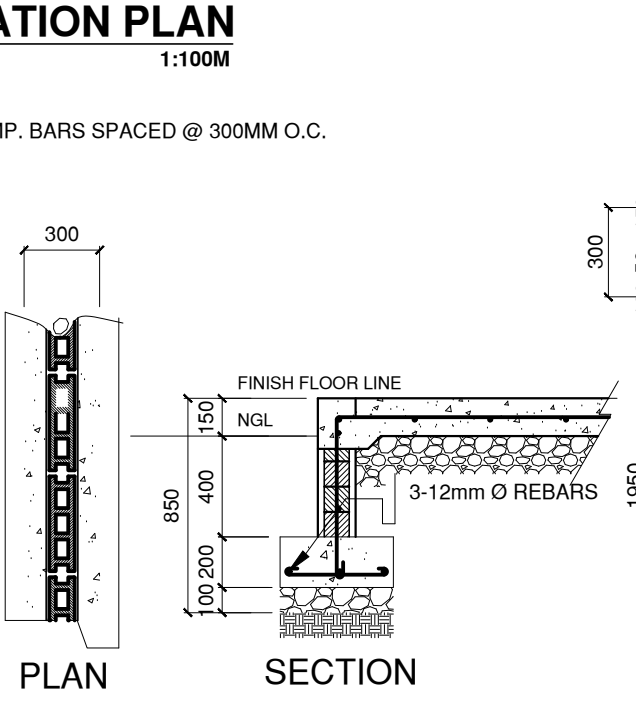
WMSU OPEN STAGE FOUNDATION PLAN
SCALE: 1:100M



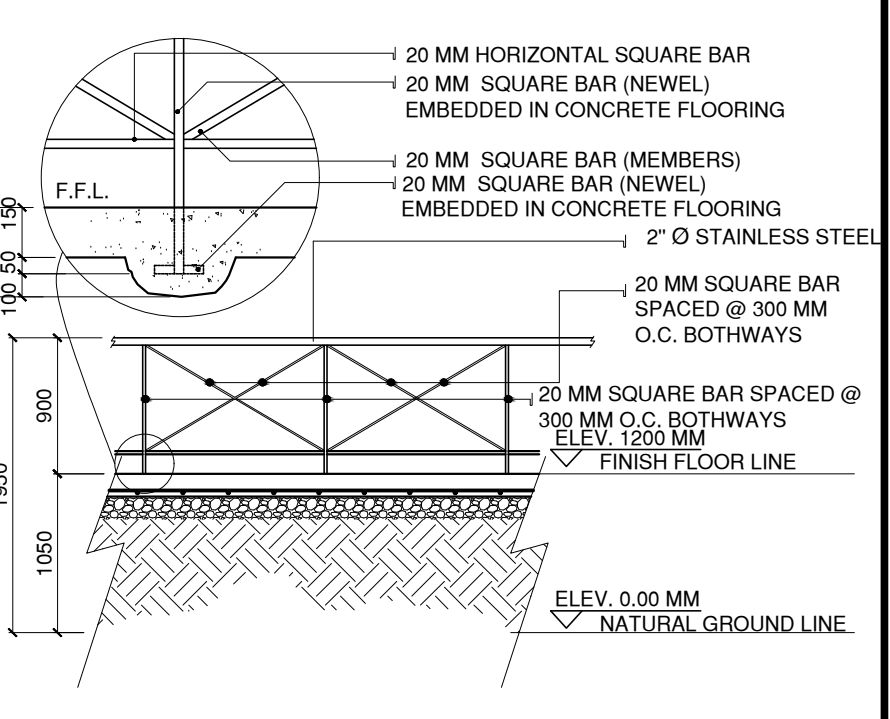
WALL FOOTING DETAILS
SCALE: 1:50 MTS



ZOCALO 1 DETAILS
SCALE: 1:50 MTS

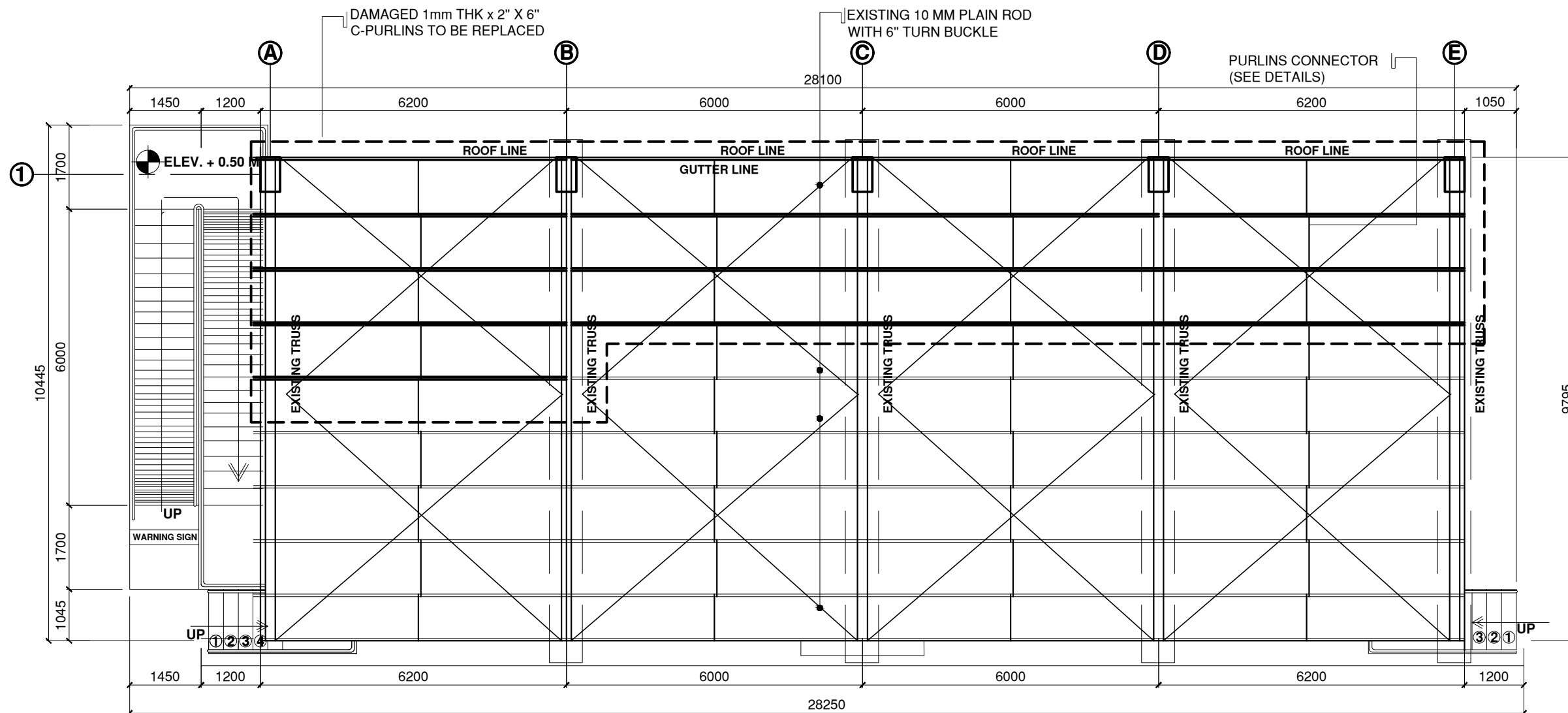


ZOCALO 2 DETAILS
SCALE: 1:50 MTS

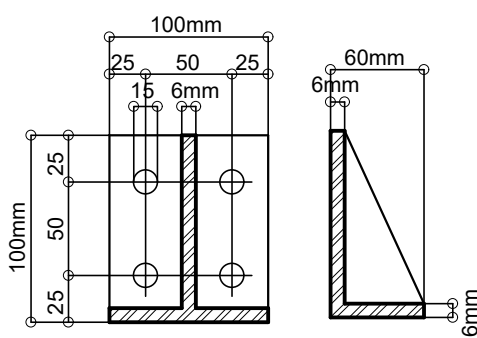


RAILING SECTION
SCALE: 1:50M

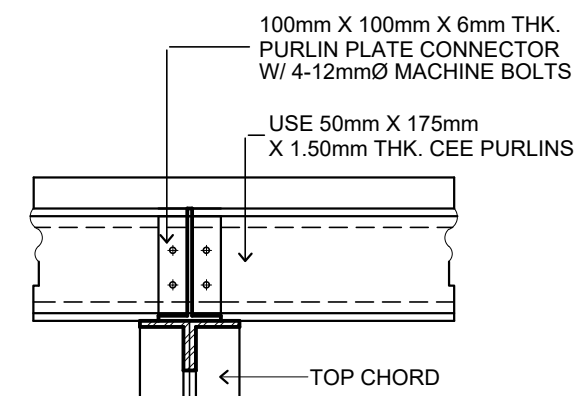
	DESIGNED BY:	PROJECT TITLE:	REQUISITIONER	RECOMMENDING APPROVAL	RECOMMENDING APPROVAL	APPROVED BY:	SHEET CONTENTS	SHEET NO.	
	ARCH. JOSEPH ANDREW L. SAHIAL, uap UNIVERSITY ARCHITECT PRC: 0010577 PTR: 2559115 TIN: 445013228	PROPOSED REPAIR AND RENOVATION OF W.M.S.U. OPEN STAGE WMSU LOT-A, NORMAL ROAD BALIWASAN ZAMBOANGA CITY	ARCH. JOSEPH ANDREW L. SAHIAL, uap DIRECTOR OF PHYSICAL PLANT AND ENGINEERING SERVICES	ARCH. JOSEPH ANDREW L. SAHIAL, uap DIRECTOR OF PHYSICAL PLANT AND ENGINEERING SERVICES	DR. JOSE LITO D. MADROÑAL VICE PRESIDENT FOR ADMIN AND FINANCE	DR. MA. CARLA T. OCHOTORENA WMSU PRESIDENT	FOUNDATION PLAN WALL FOOTING DETAILS ZOCALO FOOTING DETAILS RAILING DETAILS DRAFTED BY: P.R.R.C.	S01 0712	



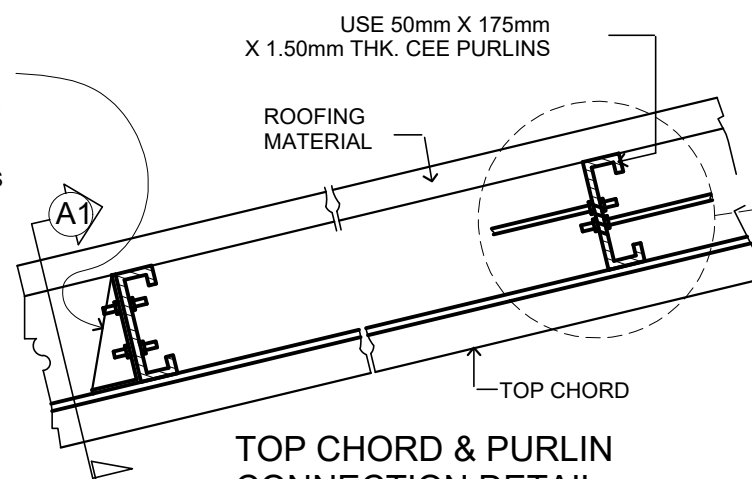
ROOF FRAMING LAYOUT PLAN
SCALE: 1:100M



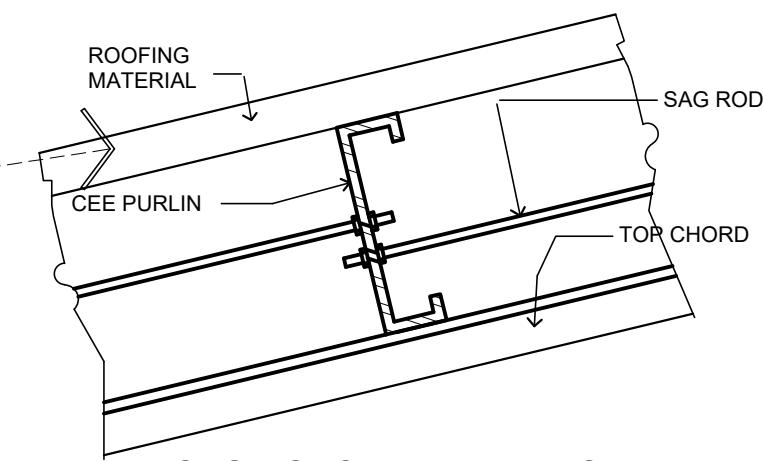
PURLIN PLATE CONNECTOR DETAIL



DETAIL OF SECTION 'A1'



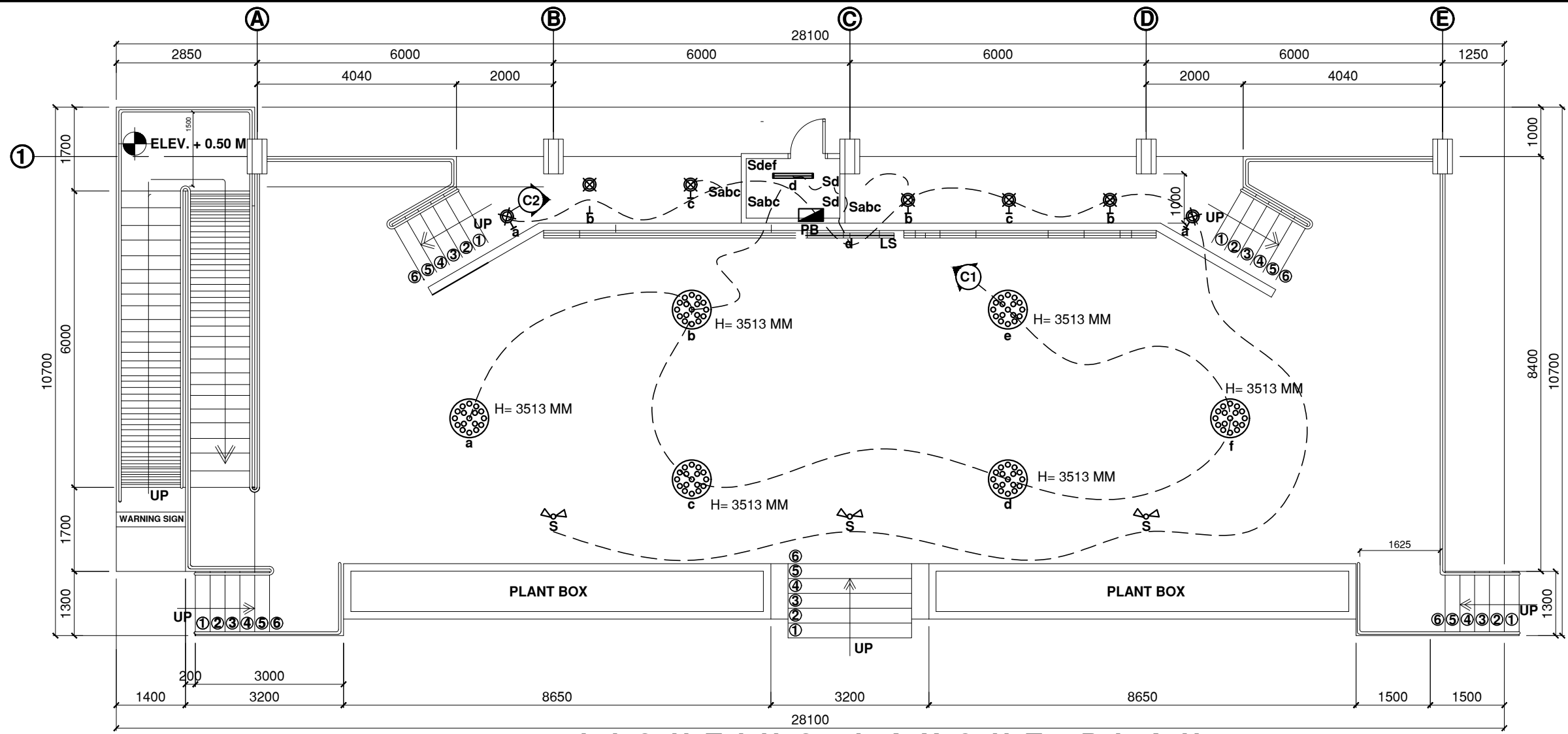
TOP CHORD & PURLIN CONNECTION DETAIL



SAG RODS AND PURLINS CONNECTION DETAIL

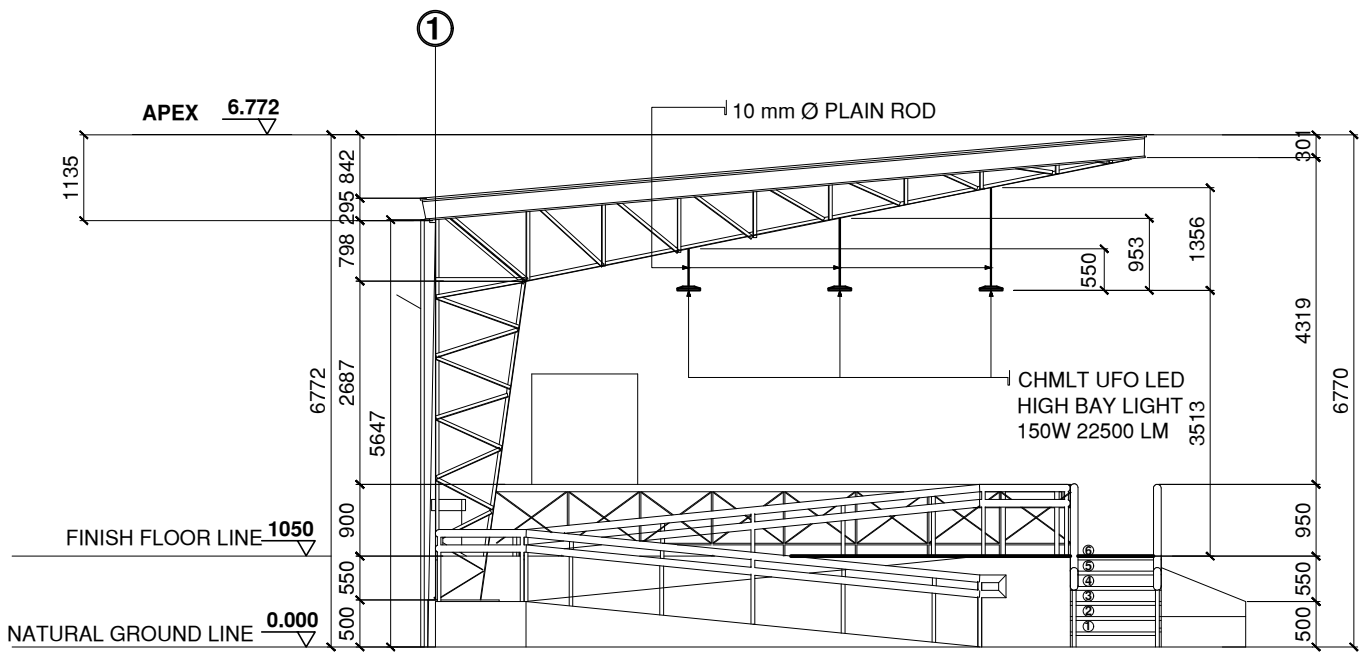
PURLIN CONNECTION DETAIL
NOT TO SCALE

	DESIGNED BY:	PROJECT TITLE:	REQUISITIONER	RECOMMENDING APPROVAL	RECOMMENDING APPROVAL	APPROVED BY:	SHEET CONTENTS	SHEET NO.	
	ARCH. JOSEPH ANDREW L. SAHIAL_uap UNIVERSITY ARCHITECT	PROPOSED REPAIR AND RENOVATION OF W.M.S.U. OPEN STAGE	ARCH. JOSEPH ANDREW L. SAHIAL_uap DIRECTOR OF PHYSICAL PLANT AND ENGINEERING SERVICES	ARCH. JOSEPH ANDREW L. SAHIAL_uap DIRECTOR OF PHYSICAL PLANT AND ENGINEERING SERVICES	DR. JOSELO D. MADROÑAL VICE PRESIDENT FOR ADMIN AND FINANCE	DR. MA. CARLA A. OCHOTORENA WMSU-PRESIDENT	-ROOF FRAMING LAYOUT PLAN -PURLINS CONNECTION DETAILS DRAFTED BY: P.R.R.C.	S03 0912	
PRC: 0010577 PTR: 2559115 TIN: 445013228	LOCATION: WMSU LOT-A, NORMAL ROAD BALIWASAN ZAMBOANGA CITY								



LIGHTING LAYOUT PLAN
SCALE: 1:100M

NOTE:
ALL HIGH BAY LED LIGHTS MUST BE MOUNTED AT THE SAME HEIGHT
500MM BELOW THE LOWEST POINT OF CEILING. USE RMC IF NEEDED



LEFT SIDE ELEVATION
SCALE: 1:100M

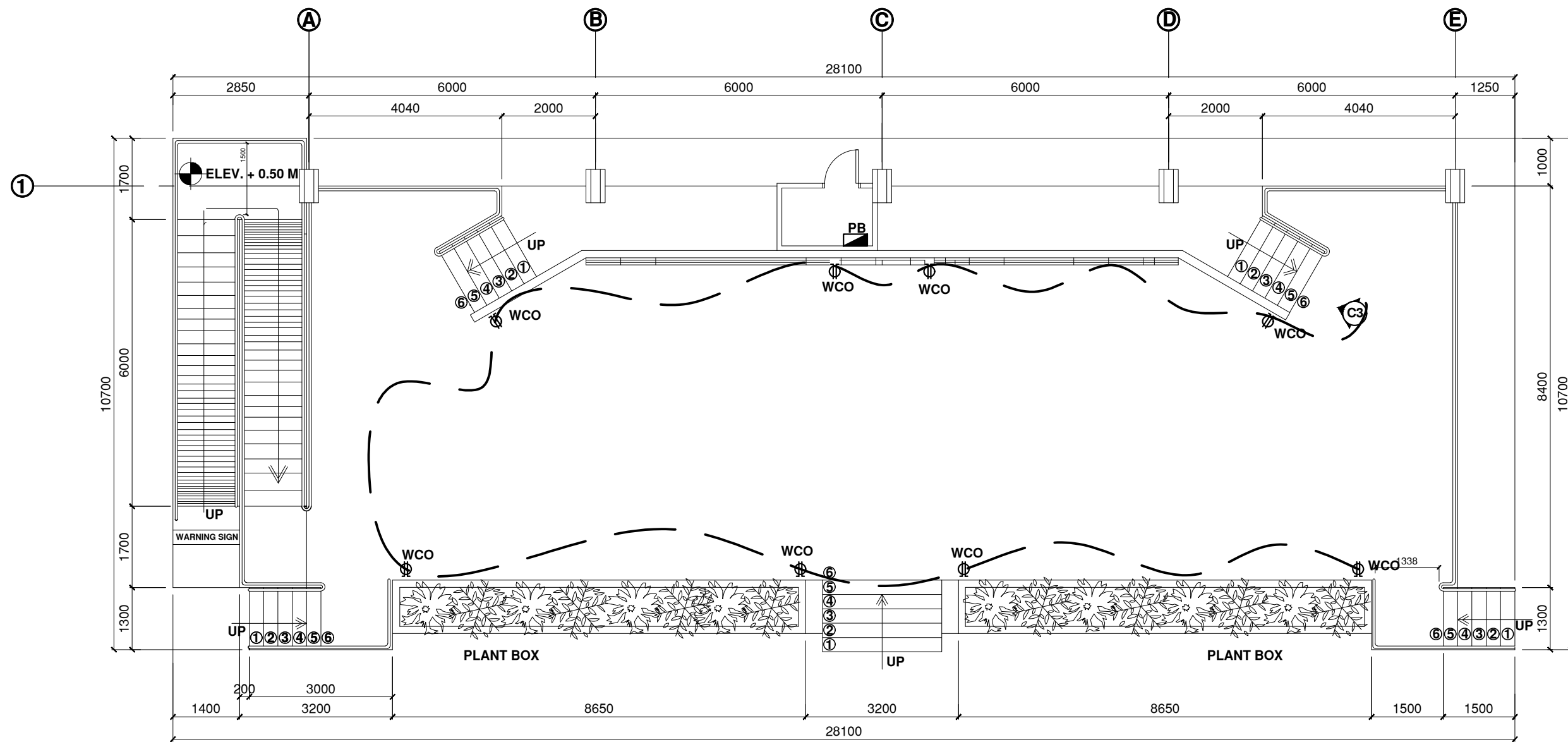


CHMLT UFO LED HIGH BAY LIGHT
150W 22500 LM

LEGENDS AND SYMBOLS

	HIGH BAY UFO LED LIGHT 150W		PANEL BOARD
	WALL MOUNTED 9W LED		CIRCUIT HOMERUN
	LED STRIP		1GANG LIGHT SWITCH
	2x18W-LED, TUBULAR LAMP W/ REFLECTIVE DIFFUSER		3GANG LIGHT SWITCH
	MOTORIZED RGBW 60W STAGE LIGHT		WEATHERPROOF CONVENIENCE OUTLET

	DESIGNED BY:	PREPARED BY:	PROJECT TITLE:	REQUISITIONER	RECOMMENDING APPROVAL	RECOMMENDING APPROVAL	APPROVED BY:	SHEET CONTENTS	SHEET NO.	
	PROFESSIONAL ELECTRICAL ENGINEER	UNIVERSITY ELECTRICAL ENGINEER	PROPOSED REPAIR AND RENOVATION OF W.M.S.U. OPEN STAGE	ARCH. JOSEPH ANDREW L. SAHIAL, uap DIRECTOR OF PHYSICAL PLANT AND ENGINEERING SERVICES	ARCH. JOSEPH ANDREW L. SAHIAL, uap DIRECTOR OF PHYSICAL PLANT AND ENGINEERING SERVICES	DR. JOSELITO D. MADROÑAL VICE PRESIDENT FOR ADMIN AND FINANCE	DR. MA. CARLA T. OCHOTORENA WMSU PRESIDENT	-LIGHTING LAYOUT PLAN -LEGEND	A10 1012	
PRC:	PTR:	TIN:	PRC: rec23724 PTR: TIN: 275203179	LOCATION: WMSU LOT-A, NORMAL ROAD BALIWASAN ZAMBOANGA CITY	PRC: 0010577 PTR: 2559115 TIN: 445013228			DRAFTED BY: KENT F.		WMSU-PPES-2023-01 Effective Date: 08 - Sept.-2021



POWER LAYOUT PLAN
 SCALE: 1:100M

LEGENDS AND SYMBOLS

	HIGH BAY UFO LED LIGHT 150W		PANEL BOARD
	WALL MOUTED 9W LED		CIRCUIT HOMERUN
	LED STRIP	Sa	1GANG LIGHT SWITCH
	2x18W-LED, TUBULAR LAMP W/ REFLECTIVE DIFFUSER	Sdef	3GANG LIGHT SWITCH
	MOTORIZED RGBW 60W STAGE LIGHT		WEATHERPROOF CONVENIENCE OUTLET

	DESIGNED BY:	PREPARED BY:	PROJECT TITLE:	REQUISITIONER	RECOMMENDING APPROVAL	RECOMMENDING APPROVAL	APPROVED BY:	SHEET CONTENTS	SHEET NO.	
	PROFESSIONAL ELECTRICAL ENGINEER	ENGR. RICARDO B. GONZALES UNIVERSITY ELECTRICAL ENGINEER	PROPOSED REPAIR AND RENOVATION OF W.M.S.U. OPEN STAGE	ARCH. JOSEPH ANDREW L. SAHIAL, uap DIRECTOR OF PHYSICAL PLANT AND ENGINEERING SERVICES	ARCH. JOSEPH ANDREW L. SAHIAL, uap DIRECTOR OF PHYSICAL PLANT AND ENGINEERING SERVICES	DR. JOSELITO D. MADROÑAL VICE PRESIDENT FOR ADMIN AND FINANCE	DR. MA. CARLA A. OCHOTORENA WMSU-PRESIDENT	-POWER LAYOUT PLAN -LEGEND	A11 11/12	
PRC:	PTR:	TIN:	PRC: rec23724 PTR: TIN: 275203179	LOCATION: WMSU LOT-A, NORMAL ROAD BALIWASAN ZAMBOANGA CITY	PRC: 0010577 PTR: 2559115 TIN: 445013228			DRAFTED BY: KENT F.		WMSU-PPES-2023-01 Effective Date: 08 - Sept.-2021

CIRCUIT NO	DESCRIPTION OF LOADS	NOMINAL VOLTAGE	WATTS	PF	ALLOCATED VA	CONNECTED VA	SINGLE PHASE CURRENT	BREAKER				CONDUCTOR			CONDUIT	
								AT	AF	KAIC	NO.OF POLES	SIZE mm ²	SIZE (G)mm ²	TYPE	SIZE mm Ø	TYPE
1	6 - High Bay UFO LED light 150W	230	900	0.85	1500	1058.82	6.52	15	50	5	2	2.0		THWN	20	PVC
2	1-2x18 LED tubular lamp w/ reflective diffuser 7-9w,LED Wall mounted LED STRIP 15W/meter 3 - Motorized Stage Light RGBW 60W	230	369	0.85	1500	434.18	6.52	15	50	5	2	2.0		THWN	20	PVC
3	8 - Weatherproof Convenience Outlet	230	1440	1	1500	1440	6.52	20	50	5	2	3.5	2.0	THWN	20	PVC
4	S P A R E				1500	1500	6.52									
	T O T A L				6000	4433	26.08									

MDP LOAD ANALYSIS @100% DEMAND FACTOR

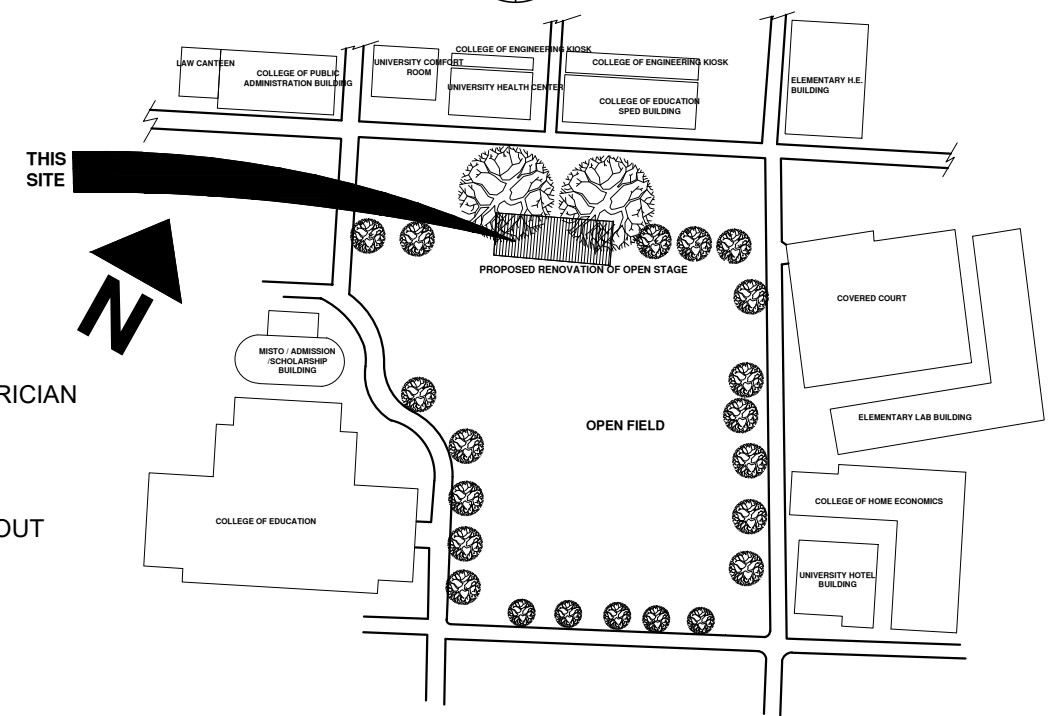
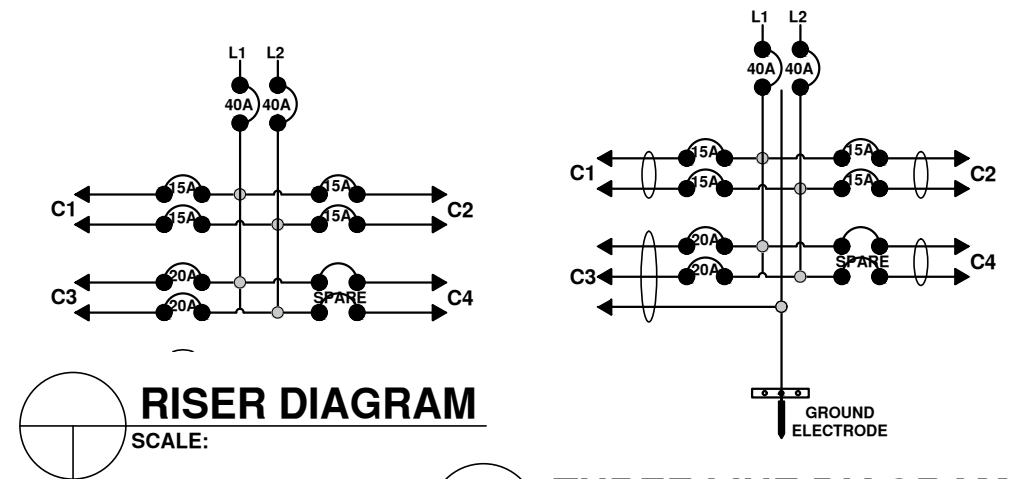
CONDUCTOR SIZE: [26.08A + 6.52A(25%)] 125% =34.64A



USE 2 - 8.0mm² THWN + 1 - 3.5mm² (G) THWN in 20mm dia. PVC

CIRCUIT PROTECTION DEVICE SIZE: USE 40A, 100AF, 60HZ, 2POLE, 10KAIC, MCCB BOLT-ON CENTERMAIN

GENERAL NOTES AND SPECIFICATION

- ALL ELECTRICAL WORKS & INSTALLATION SHALL COMPLY WITH THE PROVISIONS OF THE LATEST EDITION OF PHILIPPINE ELECTRICAL CODE WITH THE RULES & REGULATIONS OF THE NATIONAL & LOCAL AUTHORITIES CONCERNED IN THE INFORCEMENT OF ELECTRICAL LAWS & REGULATIONS OF THE UTILITY COMPANY CONCERNED.
- SERVICE VOLTAGE SHALL BE 220 VOLTS, 60 HERTZ, SINGLE PHASE.
- ALL INSTALLATION SHALL BE CONCEALED FROM VIEW, WIRING SHALL BE INCASE IN POLYVINYL CHLORIDE (PVC) PIPE SCHEDULE 40 EXCEPT POWER SUPPLY & TELEPHONE SERVICE WHICH SHALL BE RIGID STEEL CONDUIT (RSC) OTHERWISE NOTED.
- LINE 1 - RED
- LINE 2 - BLACK
- NEUTRAL - GREEN
- MINIMUM WIRE & CONDUIT SIZE SHALL BE NO.12 AWG TYPE THWN & 1/2"Ø PVC TRADE SIZE, RESPECTIVELY UNLESS OTHERWISE SPECIFIED.
- PULL BOXES OF APPROPRIATE SIZE SHALL BE PROVIDED, EVEN IF NOT INDICATED IN DRAWINGS TO ACCOMMODATE THE NUMBER OF SPLICES OF WIRES.
- ALL MATERIALS TO BE USED SHALL BE NEW & APPROVED TYPE APPROPRIATE FOR BOTH LOCATION & INTENDED USE.
- LIGHT CONTROL SWITCHES SHALL BE RATED 10a, 300 WATTS & SHALL NOT CARRY A LOAD GREATER THAN 50 amps.
- ALL DUPLEX RECEPTACLES MUST BE WEATHERPROOF AND RATED 15a, 250 VOLTS, ROUNDED WITH PARALLEL SLOT .
- FOR EACH SPARE CIRCUIT IN PANEL BOARD. PROVIDE EMPTY 3/4"Ø.
- ELECTRICAL INSTALLATION SHALL BE UNDER THE DIRECT SUPERVISION OF A DULY LISCENSED ELECTRICAL ENGINEER, OR A RESGISTERED MASTER ELECTRICIAN
- ALL HIGH BAY LED LIGHTS MUST BE MOUNTED AT THE SAME HEIGHT 500MM BELOW THE LOWEST POINT OF CEILING. USE RMC IF NEEDED.
- ALL LIGHTS MUST BE DAYLIGHT WHITE EXCEPT FOR THE STAGE LIGHT AND LED STRIP, WHERE IT MUST BE RGBW.
- NO REVISIONS IN THE DESIGN SHALL BE DONE WITHOUT THE PRIOR KNOWLEDGE & APPROVAL OF THE DESIGNER & THE OWNER, ANY REVISION DONE WITHOUT APPROVAL SHALL CAUSE RESPONSIBILITY OF THE DESIGNER TO CEASE AS A WHOLE.



	DESIGNED BY:	PREPARED BY:	PROJECT TITLE:	REQUISITIONER	RECOMMENDING APPROVAL	RECOMMENDING APPROVAL	APPROVED BY:	SHEET CONTENTS	SHEET NO.		
	PROFESSIONAL ELECTRICAL ENGINEER	UNIVERSITY ELECTRICAL ENGINEER	PROPOSED REPAIR AND RENOVATION OF W.M.S.U. OPEN STAGE	ARCH. JOSEPH ANDREW L. SAHIAL, uap DIRECTOR OF PHYSICAL PLANT AND ENGINEERING SERVICES	ARCH. JOSEPH ANDREW L. SAHIAL, uap DIRECTOR OF PHYSICAL PLANT AND ENGINEERING SERVICES	DR. JOSELITO D. MADROÑAL VICE PRESIDENT FOR ADMIN AND FINANCE	DR. MA. CARLA H. TUCHOTORENA WMSU PRESIDENT	LOAD ANALYSIS GENERAL NOTES AND SPECIFICATION VICINITY MAP	A12 12 12		
PRC:	PTR:	TIN:	PRC: rec23724	PTR:	TIN: 275203179	LOCATION: WMSU LOT-A, NORMAL ROAD BALIWASAN ZAMBOANGA CITY	PRC: 0010577	PTR: 2559115	TIN: 445013228	DRAFTED BY: KENT F.	WMSU-PPES-2023-01 Effective Date: 08 - Sept-2021