

PHILIPPINE BIDDING DOCUMENTS

**Procurement of
INFRASTRUCTURE
PROJECTS**

Government of the Republic of the Philippines

**CONSTRUCTION OF AL FRESCO FOR
THE UNIVERSITY FOOD SERVICE
CENTER (REBID)**

(ABC: Php 1,083,743.84)

*PhilGeps Reference No: 11212764
PR No. 24-09-411 INF*

**Sixth Edition
July 2020**

Preface

These Philippine Bidding Documents (PBDs) for the procurement of Infrastructure Projects (hereinafter referred to also as the “Works”) through Competitive Bidding have been prepared by the Government of the Philippines for use by all branches, agencies, departments, bureaus, offices, or instrumentalities of the government, including government-owned and/or -controlled corporations, government financial institutions, state universities and colleges, local government units, and autonomous regional government. The procedures and practices presented in this document have been developed through broad experience, and are for mandatory use in projects that are financed in whole or in part by the Government of the Philippines or any foreign government/foreign or international financing institution in accordance with the provisions of the 2016 revised Implementing Rules and Regulations (IRR) of Republic Act (RA) No. 9184.

The PBDs are intended as a model for admeasurements (unit prices or unit rates in a bill of quantities) types of contract, which are the most common in Works contracting.

The Bidding Documents shall clearly and adequately define, among others: (i) the objectives, scope, and expected outputs and/or results of the proposed contract; (ii) the eligibility requirements of Bidders; (iii) the expected contract duration; and (iv) the obligations, duties, and/or functions of the winning Bidder.

Care should be taken to check the relevance of the provisions of the PBDs against the requirements of the specific Works to be procured. If duplication of a subject is inevitable in other sections of the document prepared by the Procuring Entity, care must be exercised to avoid contradictions between clauses dealing with the same matter.

Moreover, each section is prepared with notes intended only as information for the Procuring Entity or the person drafting the Bidding Documents. They shall not be included in the final documents. The following general directions should be observed when using the documents:

- a. All the documents listed in the Table of Contents are normally required for the procurement of Infrastructure Projects. However, they should be adapted as necessary to the circumstances of the particular Project.
- b. Specific details, such as the “*name of the Procuring Entity*” and “*address for bid submission*,” should be furnished in the Instructions to Bidders, Bid Data Sheet, and Special Conditions of Contract. The final documents should contain neither blank spaces nor options.
- c. This Preface and the footnotes or notes in italics included in the Invitation to Bid, BDS, General Conditions of Contract, Special Conditions of Contract, Specifications, Drawings, and Bill of Quantities are not part of the text of the final document, although they contain instructions that the Procuring Entity should strictly follow.
- d. The cover should be modified as required to identify the Bidding Documents as to the names of the Project, Contract, and Procuring Entity, in addition to date of issue.
- e. Modifications for specific Procurement Project details should be provided in the Special Conditions of Contract as amendments to the Conditions of Contract. For easy completion, whenever reference has to be made to specific clauses in the Bid Data Sheet or Special Conditions of Contract, these terms shall be printed in bold typeface on Sections I (Instructions to Bidders) and III (General Conditions of Contract), respectively.

- f. For guidelines on the use of Bidding Forms and the procurement of Foreign-Assisted Projects, these will be covered by a separate issuance of the Government Procurement Policy Board.

TABLE OF CONTENTS

Glossary of Terms, Abbreviations, and Acronyms	5
Section I. Invitation to Bid.....	7
Section II. Instructions to Bidders	10
1. Scope of Bid.....	11
2. Funding Information	11
3. Bidding Requirements.....	11
4. Corrupt, Fraudulent, Collusive, Coercive, and Obstructive Practices	11
5. Eligible Bidders.....	11
6. Origin of Associated Goods	12
7. Subcontracts	12
8. Pre-Bid Conference.....	12
9. Clarification and Amendment of Bidding Documents	12
10. Documents Comprising the Bid: Eligibility and Technical Components	12
11. Documents Comprising the Bid: Financial Component	13
12. Alternative Bids	13
13. Bid Prices	13
14. Bid and Payment Currencies	13
15. Bid Security.....	14
16. Sealing and Marking of Bids.....	14
17. Deadline for Submission of Bids	14
18. Opening and Preliminary Examination of Bids	14
19. Detailed Evaluation and Comparison of Bids	14
20. Post Qualification.....	15
21. Signing of the Contract	15
Section III. Bid Data Sheet	16
Section IV. General Conditions of Contract.....	19
1. Scope of Contract.....	20
2. Sectional Completion of Works	20
3. Possession of Site.....	20
4. The Contractor's Obligations.....	20
5. Performance Security	20
6. Site Investigation Reports	21
7. Warranty.....	21
8. Liability of the Contractor.....	21
9. Termination for Other Causes.....	21
10. Dayworks	21
11. Program of Work.....	21

12. Instructions, Inspections and Audits	22
13. Advance Payment.....	22
14. Progress Payments	22
15. Operating and Maintenance Manuals.....	22
Section V. Special Conditions of Contract	23
Section VI. Specifications	25
Section VII. Drawings	49
Section VIII. Bill of Quantities.....	55
Section IX. Checklist of Technical and Financial Documents	77

Glossary of Terms, Abbreviations, and Acronyms

ABC – Approved Budget for the Contract.

ARCC – Allowable Range of Contract Cost.

BAC – Bids and Awards Committee.

Bid – A signed offer or proposal to undertake a contract submitted by a bidder in response to and in consonance with the requirements of the bidding documents. Also referred to as *Proposal* and *Tender*. (2016 revised IRR, Section 5[c])

Bidder – Refers to a contractor, manufacturer, supplier, distributor and/or consultant who submits a bid in response to the requirements of the Bidding Documents. (2016 revised IRR, Section 5[d])

Bidding Documents – The documents issued by the Procuring Entity as the bases for bids, furnishing all information necessary for a prospective bidder to prepare a bid for the Goods, Infrastructure Projects, and/or Consulting Services required by the Procuring Entity. (2016 revised IRR, Section 5[e])

BIR – Bureau of Internal Revenue.

BSP – Bangko Sentral ng Pilipinas.

CDA – Cooperative Development Authority.

Consulting Services – Refer to services for Infrastructure Projects and other types of projects or activities of the GOP requiring adequate external technical and professional expertise that are beyond the capability and/or capacity of the GOP to undertake such as, but not limited to: (i) advisory and review services; (ii) pre-investment or feasibility studies; (iii) design; (iv) construction supervision; (v) management and related services; and (vi) other technical services or special studies. (2016 revised IRR, Section 5[i])

Contract – Refers to the agreement entered into between the Procuring Entity and the Supplier or Manufacturer or Distributor or Service Provider for procurement of Goods and Services; Contractor for Procurement of Infrastructure Projects; or Consultant or Consulting Firm for Procurement of Consulting Services; as the case may be, as recorded in the Contract Form signed by the parties, including all attachments and appendices thereto and all documents incorporated by reference therein.

Contractor – is a natural or juridical entity whose proposal was accepted by the Procuring Entity and to whom the Contract to execute the Work was awarded. Contractor as used in these Bidding Documents may likewise refer to a supplier, distributor, manufacturer, or consultant.

CPI – Consumer Price Index.

DOLE – Department of Labor and Employment.

DTI – Department of Trade and Industry.

Foreign-funded Procurement or Foreign-Assisted Project – Refers to procurement whose funding source is from a foreign government, foreign or international financing institution as specified in the Treaty or International or Executive Agreement. (2016 revised IRR, Section 5[b]).

GFI – Government Financial Institution.

GOCC – Government-owned and/or –controlled corporation.

Goods – Refer to all items, supplies, materials and general support services, except Consulting Services and Infrastructure Projects, which may be needed in the transaction of public businesses or in the pursuit of any government undertaking, project or activity, whether in the nature of equipment, furniture, stationery, materials for construction, or personal property of any kind, including non-personal or contractual services such as the repair and maintenance of equipment and furniture, as well as trucking, hauling, janitorial, security, and related or analogous services, as well as procurement of materials and supplies provided by the Procuring Entity for such services. The term “related” or “analogous services” shall include, but is not limited to, lease or purchase of office space, media advertisements, health maintenance services, and other services essential to the operation of the Procuring Entity. (2016 revised IRR, Section 5[r])

GOP – Government of the Philippines.

Infrastructure Projects – Include the construction, improvement, rehabilitation, demolition, repair, restoration or maintenance of roads and bridges, railways, airports, seaports, communication facilities, civil works components of information technology projects, irrigation, flood control and drainage, water supply, sanitation, sewerage and solid waste management systems, shore protection, energy/power and electrification facilities, national buildings, school buildings, hospital buildings, and other related construction projects of the government. Also referred to as *civil works or works*. (2016 revised IRR, Section 5[u])

LGUs – Local Government Units.

NFCC – Net Financial Contracting Capacity.

NGA – National Government Agency.

PCAB – Philippine Contractors Accreditation Board.

PhilGEPS - Philippine Government Electronic Procurement System.

Procurement Project – refers to a specific or identified procurement covering goods, infrastructure project or consulting services. A Procurement Project shall be described, detailed, and scheduled in the Project Procurement Management Plan prepared by the agency which shall be consolidated in the procuring entity's Annual Procurement Plan. (GPPB Circular No. 06-2019 dated 17 July 2019)

PSA – Philippine Statistics Authority.

SEC – Securities and Exchange Commission.

SLCC – Single Largest Completed Contract.

UN – United Nations.

Section I. Invitation to Bid

Notes on the Invitation to Bid

The Invitation to Bid (IB) provides information that enables potential Bidders to decide whether to participate in the procurement at hand. The IB shall be posted in accordance with Section 21.2 of the 2016 revised IRR of RA No. 9184.

Apart from the essential items listed in the Bidding Documents, the IB should also indicate the following:

- a. The date of availability of the Bidding Documents, which shall be from the time the IB is first advertised/posted until the deadline for the submission and receipt of bids;
- b. The place where the Bidding Documents may be acquired or the website where it may be downloaded;
- c. The deadline for the submission and receipt of bids; and
- d. Any important bid evaluation criteria.

The IB should be incorporated into the Bidding Documents. The information contained in the IB must conform to the Bidding Documents and in particular to the relevant information in the Bid Data Sheet.



Invitation to Bid for *PR 24-09-411 INF Construction of Al Fresco for the University Food Service Center (Rebid)*

1. The *Western Mindanao State University*, through the *STF 2024* intends to apply the sum of ***One Million Eighty-Three Thousand Seven Hundred Forty-Three Pesos & Eighty-Four Centavos (Php 1,083,743.84)*** being the Approved Budget for the Contract (ABC) to payments under the contract for ***Construction of Al Fresco for the University Food Service Center (Rebid)***. Bids received in excess of the ABC shall be automatically rejected at bid opening.
2. The *Western Mindanao State University* now invites bids for the above Procurement Project. Completion of the Works is required ***Fifty-Eight (58) Calendar Days***. Bidders should have completed a contract similar to the Project. The description of an eligible bidder is contained in the Bidding Documents, particularly, in Section II (Instructions to Bidders).
3. Bidding will be conducted through open competitive bidding procedures using non-discretionary “*pass/fail*” criterion as specified in the 2016 revised Implementing Rules and Regulations (IRR) of Republic Act (RA) No. 9184.
4. Interested bidders may obtain further information from *Western Mindanao State University* and inspect the Bidding Documents at the address given below from ***8:00 AM to 5:00 PM Monday to Friday***.
5. A complete set of Bidding Documents may be acquired by interested bidders on ***September 6 – September 30, 2024*** from given address and website/s below and upon payment of the applicable fee for the Bidding Documents, pursuant to the latest Guidelines issued by the GPPB, in the amount of ***Five Thousand (5,000.00) Pesos***.
6. The *Western Mindanao State University* will hold a Pre-Bid Conference¹ on ***September 16, 2024 1:30 PM*** at ***BAC Conference Office, Ground Floor Executive Building, Western Mindanao State University, Baliwasan, Zamboanga City***, which shall be open to prospective bidders.
7. Bids must be duly received by the BAC Secretariat through manual submission at the office address as indicated below on or before ***1:00 PM September 30, 2024***. Late bids shall not be accepted.
8. All bids must be accompanied by a bid security of at least two percent (2%) of the Approved Budget for the Contract (ABC) in the form of Cash, Cashier’s Check or Manager’s Check, or Bid Securing Declaration. Bids without Bid Security will not be considered.
9. Bid opening shall be on ***September 30, 2024, 1:00 PM*** at the given address below ***BAC Conference Office, Ground Floor Executive Building, Western Mindanao State University, Baliwasan, Zamboanga City***. Bids will be opened in the presence of the bidders’ representatives who choose to attend the activity.

¹ May be deleted in case the ABC is less than One Million Pesos (PhP1,000,000) where the Procuring Entity may not hold a pre-bid conference.

10. The *Western Mindanao State University* reserves the right to reject any and all bids, declare a failure of bidding, or not award the contract at any time prior to contract award in accordance with Sections 35.6 and 41 of the 2016 revised Implementing Rules and Regulations (IRR) of RA No. 9184, without thereby incurring any liability to the affected bidder or bidders.

11. For further information, please refer to:

Mr. Joel C. Macasinag
Head Secretariat
Executive Building, BAC Office
Western Mindanao State University
Normal Road, Baliwasan
Zamboanga City
Tel. No.: (062)991-1771 loc. 1002
Email: bacsecretariate@wmsu.edu.ph

12. You may visit the following websites:

For downloading of Bidding Documents: www.wmsu.edu.ph or *PhilGeps website*

September 6, 2024

FREDELINO M. SAN JUAN, Ph.D.
BAC Chairperson

Section II. Instructions to Bidders

Notes on the Instructions to Bidders

This Section on the Instruction to Bidders (ITB) provides the information necessary for bidders to prepare responsive bids, in accordance with the requirements of the Procuring Entity. It also provides information on bid submission, eligibility check, opening and evaluation of bids, post-qualification, and on the award of contract.

1. Scope of Bid

The Procuring Entity, *Western Mindanao State University* Invites Bids for the *PR 24-09-411 INF Construction of Al Fresco for the University Food Service Center (Rebid)*.

The Procurement Project (referred to herein as “Project”) is for the construction of Works, as described in Section VI (Specifications).

2. Funding Information

2.1. The GOP through the source of funding as indicated below for *STF 2024* in the amount of *One Million Eighty-Three Thousand Seven Hundred Forty-Three Pesos & Eighty-Four Centavos (Php 1,083,743.84)*.

2.2. The source of funding is:

Special Trust Fund

3. Bidding Requirements

The Bidding for the Project shall be governed by all the provisions of RA No. 9184 and its 2016 revised IRR, including its Generic Procurement Manual and associated policies, rules and regulations as the primary source thereof, while the herein clauses shall serve as the secondary source thereof.

Any amendments made to the IRR and other GPPB issuances shall be applicable only to the ongoing posting, advertisement, or invitation to bid by the BAC through the issuance of a supplemental or bid bulletin.

The Bidder, by the act of submitting its Bid, shall be deemed to have inspected the site, determined the general characteristics of the contracted Works and the conditions for this Project, such as the location and the nature of the work; (b) climatic conditions; (c) transportation facilities; (c) nature and condition of the terrain, geological conditions at the site communication facilities, requirements, location and availability of construction aggregates and other materials, labor, water, electric power and access roads; and (d) other factors that may affect the cost, duration and execution or implementation of the contract, project, or work and examine all instructions, forms, terms, and project requirements in the Bidding Documents.

4. Corrupt, Fraudulent, Collusive, Coercive, and Obstructive Practices

The Procuring Entity, as well as the Bidders and Contractors, shall observe the highest standard of ethics during the procurement and execution of the contract. They or through an agent shall not engage in corrupt, fraudulent, collusive, coercive, and obstructive practices defined under Annex “I” of the 2016 revised IRR of RA No. 9184 or other integrity violations in competing for the Project.

5. Eligible Bidders

5.1. Only Bids of Bidders found to be legally, technically, and financially capable will be evaluated.

- 5.2. The Bidder must have an experience of having completed a Single Largest Completed Contract (SLCC) that is similar to this Project, equivalent to at least fifty percent (50%) of the ABC adjusted, if necessary, by the Bidder to current prices using the PSA's CPI, except under conditions provided for in Section 23.4.2.4 of the 2016 revised IRR of RA No. 9184.

A contract is considered to be "similar" to the contract to be bid if it has the major categories of work stated in the **BDS**.

- 5.3. For Foreign-funded Procurement, the Procuring Entity and the foreign government/foreign or international financing institution may agree on another track record requirement, as specified in the Bidding Document prepared for this purpose.
- 5.4. The Bidders shall comply with the eligibility criteria under Section 23.4.2 of the 2016 IRR of RA No. 9184.

6. Origin of Associated Goods

There is no restriction on the origin of Goods other than those prohibited by a decision of the UN Security Council taken under Chapter VII of the Charter of the UN.

7. Subcontracts

- 7.1. The Bidder may subcontract portions of the Project to the extent allowed by the Procuring Entity as stated herein, but in no case more than fifty percent (50%) of the Project.

The Procuring Entity has prescribed that:

- a. Subcontracting is not allowed.

8. Pre-Bid Conference

The Procuring Entity will hold a pre-bid conference for this Project on the specified date and time and either at its physical address *September 16, 2024 1:30 PM at BAC Conference Office, Ground Floor Executive Building, Western Mindanao State University, Zamboanga City* and/or through videoconferencing/webcasting} as indicated in paragraph 6 of the **IB**.

1. Clarification and Amendment of Bidding Documents

Prospective bidders may request for clarification on and/or interpretation of any part of the Bidding Documents. Such requests must be in writing and received by the Procuring Entity, either at its given address or through electronic mail indicated in the **IB**, at least ten (10) calendar days before the deadline set for the submission and receipt of Bids.

2. Documents Comprising the Bid: Eligibility and Technical Components

- 10.1. The first envelope shall contain the eligibility and technical documents of the Bid as specified in **Section IX. Checklist of Technical and Financial Documents**.
- 10.2. If the eligibility requirements or statements, the bids, and all other documents for submission to the BAC are in foreign language other than English, it must

be accompanied by a translation in English, which shall be authenticated by the appropriate Philippine foreign service establishment, post, or the equivalent office having jurisdiction over the foreign bidder's affairs in the Philippines. For Contracting Parties to the Apostille Convention, only the translated documents shall be authenticated through an apostille pursuant to GPPB Resolution No. 13-2019 dated 23 May 2019. The English translation shall govern, for purposes of interpretation of the bid.

- 10.3. A valid special PCAB License in case of Joint Ventures, and registration for the type and cost of the contract for this Project. Any additional type of Contractor license or permit shall be indicated in the **BDS**.
- 10.4. A List of Contractor's key personnel (e.g., Project Manager, Project Engineers, Materials Engineers, and Foremen) assigned to the contract to be bid, with their complete qualification and experience data shall be provided. These key personnel must meet the required minimum years of experience set in the **BDS**.
- 10.5. A List of Contractor's major equipment units, which are owned, leased, and/or under purchase agreements, supported by proof of ownership, certification of availability of equipment from the equipment lessor/vendor for the duration of the project, as the case may be, must meet the minimum requirements for the contract set in the **BDS**.

3. Documents Comprising the Bid: Financial Component

- 11.1. The second bid envelope shall contain the financial documents for the Bid as specified in **Section IX. Checklist of Technical and Financial Documents**.
- 11.2. Any bid exceeding the ABC indicated in paragraph 1 of the **IB** shall not be accepted.
- 11.3. For Foreign-funded procurement, a ceiling may be applied to bid prices provided the conditions are met under Section 31.2 of the 2016 revised IRR of RA No. 9184.

4. Alternative Bids

Bidders shall submit offers that comply with the requirements of the Bidding Documents, including the basic technical design as indicated in the drawings and specifications. Unless there is a value engineering clause in the **BDS**, alternative Bids shall not be accepted.

5. Bid Prices

All bid prices for the given scope of work in the Project as awarded shall be considered as fixed prices, and therefore not subject to price escalation during contract implementation, except under extraordinary circumstances as determined by the NEDA and approved by the GPPB pursuant to the revised Guidelines for Contract Price Escalation guidelines.

6. Bid and Payment Currencies

14.1. Bid prices may be quoted in the local currency or tradeable currency accepted by the BSP at the discretion of the Bidder. However, for purposes of bid evaluation, Bids denominated in foreign currencies shall be converted to Philippine currency based on the exchange rate as published in the BSP reference rate bulletin on the day of the bid opening.

14.2. *Payment of the contract price shall be made in:*

a. Philippine Pesos.

7. Bid Security

15.1. The Bidder shall submit a Bid Securing Declaration or any form of Bid Security in the amount indicated in the **BDS**, which shall be not less than the percentage of the ABC in accordance with the schedule in the **BDS**.

15.2. The Bid and bid security shall be valid until *at least 120 calendar days from the Opening of Bids*. Any bid not accompanied by an acceptable bid security shall be rejected by the Procuring Entity as non-responsive.

8. Sealing and Marking of Bids

Each Bidder shall submit one copy of the first and second components of its Bid.

The Procuring Entity may request additional hard copies and/or electronic copies of the Bid. However, failure of the Bidders to comply with the said request shall not be a ground for disqualification.

If the Procuring Entity allows the submission of bids through online submission to the given website or any other electronic means, the Bidder shall submit an electronic copy of its Bid, which must be digitally signed. An electronic copy that cannot be opened or is corrupted shall be considered non-responsive and, thus, automatically disqualified.

9. Deadline for Submission of Bids

The Bidders shall submit on or before *September 30, 2024, 1:00 PM* at its physical address at the *BAC Conference Office Ground Floor Executive Building, Western Mindanao State University, Baliwasan, Zamboanga City*.

10. Opening and Preliminary Examination of Bids

18.1. The BAC shall open the Bids in public at the time, on the date, and at the place specified in paragraph 9 of the **IB**. The Bidders' representatives who are present shall sign a register evidencing their attendance. In case videoconferencing, webcasting or other similar technologies will be used, attendance of participants shall likewise be recorded by the BAC Secretariat.

In case the Bids cannot be opened as scheduled due to justifiable reasons, the rescheduling requirements under Section 29 of the 2016 revised IRR of RA No. 9184 shall prevail.

18.2. The preliminary examination of Bids shall be governed by Section 30 of the 2016 revised IRR of RA No. 9184.

11. Detailed Evaluation and Comparison of Bids

- 19.1. The Procuring Entity's BAC shall immediately conduct a detailed evaluation of all Bids rated "*passed*" using non-discretionary pass/fail criteria. The BAC shall consider the conditions in the evaluation of Bids under Section 32.2 of 2016 revised IRR of RA No. 9184.
- 19.2. If the Project allows partial bids, all Bids and combinations of Bids as indicated in the **BDS** shall be received by the same deadline and opened and evaluated simultaneously so as to determine the Bid or combination of Bids offering the lowest calculated cost to the Procuring Entity. Bid Security as required by **ITB** Clause 15 shall be submitted for each contract (lot) separately.
- 19.3. In all cases, the NFCC computation pursuant to Section 23.4.2.6 of the 2016 revised IRR of RA No. 9184 must be sufficient for the total of the ABCs for all the lots participated in by the prospective Bidder.

12. Post Qualification

Within a non-extendible period of five (5) calendar days from receipt by the Bidder of the notice from the BAC that it submitted the Lowest Calculated Bid, the Bidder shall submit its latest income and business tax returns filed and paid through the BIR Electronic Filing and Payment System (eFPS), and other appropriate licenses and permits required by law and stated in the **BDS**.

13. Signing of the Contract

The documents required in Section 37.2 of the 2016 revised IRR of RA No. 9184 shall form part of the Contract. Additional Contract documents are indicated in the **BDS**.

Section III. Bid Data Sheet

Notes on the Bid Data Sheet (BDS)

The Bid Data Sheet (BDS) consists of provisions that supplement, amend, or specify in detail, information, or requirements included in the ITB found in Section II, which are specific to each procurement.

This Section is intended to assist the Procuring Entity in providing the specific information in relation to corresponding clauses in the ITB and has to be prepared for each specific procurement.

The Procuring Entity should specify in the BDS information and requirements specific to the circumstances of the Procuring Entity, the processing of the procurement, and the bid evaluation criteria that will apply to the Bids. In preparing the BDS, the following aspects should be checked:

- a. Information that specifies and complements provisions of the ITB must be incorporated.
- b. Amendments and/or supplements, if any, to provisions of the ITB as necessitated by the circumstances of the specific procurement, must also be incorporated.

Bid Data Sheet

ITB Clause																																														
5.2	For this purpose, contracts similar to the Project refer to contracts which have the same major categories of work, which shall be: <i>None – As provided for in Section 23.4.2.4</i>																																													
7.1	<i>Not Applicable</i>																																													
10.3	<i>[Specify if another Contractor license or permit is required.]</i>																																													
10.4	The key personnel must meet the required minimum years of experience set below: <table border="1" style="width: 100%; border-collapse: collapse;"> <thead> <tr> <th style="text-align: left;"><u>Key Personnel</u></th> <th style="text-align: center;"><u>General Experience</u></th> <th style="text-align: center;"><u>Relevant Experience</u></th> </tr> </thead> <tbody> <tr> <td>Foreman</td> <td style="text-align: center;">3 years</td> <td style="text-align: center;">3 years</td> </tr> <tr> <td>Licensed Civil Engineer</td> <td style="text-align: center;">3 years</td> <td style="text-align: center;">3 years</td> </tr> <tr> <td>Safety Officer</td> <td style="text-align: center;">3 years</td> <td style="text-align: center;">3 years</td> </tr> <tr> <td>Electrician</td> <td style="text-align: center;">3 years</td> <td style="text-align: center;">3 years</td> </tr> </tbody> </table>	<u>Key Personnel</u>	<u>General Experience</u>	<u>Relevant Experience</u>	Foreman	3 years	3 years	Licensed Civil Engineer	3 years	3 years	Safety Officer	3 years	3 years	Electrician	3 years	3 years																														
<u>Key Personnel</u>	<u>General Experience</u>	<u>Relevant Experience</u>																																												
Foreman	3 years	3 years																																												
Licensed Civil Engineer	3 years	3 years																																												
Safety Officer	3 years	3 years																																												
Electrician	3 years	3 years																																												
10.5	The minimum major equipment requirements are the following: <table border="1" style="width: 100%; border-collapse: collapse;"> <thead> <tr> <th style="text-align: left;"><u>Equipment</u></th> <th style="text-align: center;"><u>Capacity</u></th> <th style="text-align: center;"><u>Number of Units</u></th> </tr> </thead> <tbody> <tr> <td colspan="3"><u>Safety Equipment's</u></td> </tr> <tr> <td colspan="3">Hard Hats</td> </tr> <tr> <td colspan="3">Dust Mask</td> </tr> <tr> <td colspan="3">Reflectorized Safety Vest</td> </tr> <tr> <td colspan="3">Hand Gloves</td> </tr> <tr> <td colspan="3">Safety Shoes</td> </tr> <tr> <td colspan="3">Safety Goggles</td> </tr> <tr> <td colspan="3">Medical Kit</td> </tr> <tr> <td colspan="3">Safety Signages & Barricades</td> </tr> <tr> <td colspan="3"><u>Heavy Equipment/s</u></td> </tr> <tr> <td>Truck</td> <td></td> <td style="text-align: center;">1</td> </tr> <tr> <td colspan="3"><u>Equipments/Tools</u></td> </tr> <tr> <td>Minor Tools</td> <td></td> <td style="text-align: center;">As Needed</td> </tr> <tr> <td>Tamping Rammer</td> <td></td> <td style="text-align: center;">1</td> </tr> </tbody> </table>	<u>Equipment</u>	<u>Capacity</u>	<u>Number of Units</u>	<u>Safety Equipment's</u>			Hard Hats			Dust Mask			Reflectorized Safety Vest			Hand Gloves			Safety Shoes			Safety Goggles			Medical Kit			Safety Signages & Barricades			<u>Heavy Equipment/s</u>			Truck		1	<u>Equipments/Tools</u>			Minor Tools		As Needed	Tamping Rammer		1
<u>Equipment</u>	<u>Capacity</u>	<u>Number of Units</u>																																												
<u>Safety Equipment's</u>																																														
Hard Hats																																														
Dust Mask																																														
Reflectorized Safety Vest																																														
Hand Gloves																																														
Safety Shoes																																														
Safety Goggles																																														
Medical Kit																																														
Safety Signages & Barricades																																														
<u>Heavy Equipment/s</u>																																														
Truck		1																																												
<u>Equipments/Tools</u>																																														
Minor Tools		As Needed																																												
Tamping Rammer		1																																												
12	<i>No Further Instructions</i>																																													
15.1	The bid security shall be in the form of a Bid Securing Declaration or any of the following forms and amounts: <p style="text-align: center;">The amount of not less than two <i>percent (2%) of ABC</i> if bid security is in cash, cashier's/manager's check</p>																																													

19.2	Partial bid is not allowed. Infrastructure project is packaged in a single lot and the lot shall not be divided into sub-lots for the purpose of bidding, evaluation, and contract award.
20	<p><i>PCAB License (Size Range: At least Small B, License Category: C & D)</i></p> <p><i>All licenses and permits relevant to the Project and the corresponding law requiring it, e.g., Environmental Compliance Certificate, Certification that the project site is not within a geohazard zone, etc.</i></p>
21	Additional contract documents relevant to the Project that may be required by existing laws and/or the Procuring Entity, such as construction schedule and S-curve, manpower schedule, construction methods, equipment utilization schedule, construction safety and health program approved by the DOLE, and other acceptable tools of project scheduling.

Section IV. General Conditions of Contract

Notes on the General Conditions of Contract

The General Conditions of Contract (GCC) in this Section, read in conjunction with the Special Conditions of Contract in Section V and other documents listed therein, should be a complete document expressing all the rights and obligations of the parties.

Matters governing performance of the Contractor, payments under the contract, or matters affecting the risks, rights, and obligations of the parties under the contract are included in the GCC and Special Conditions of Contract.

Any complementary information, which may be needed, shall be introduced only through the Special Conditions of Contract.

1. **Scope of Contract**

This Contract shall include all such items, although not specifically mentioned, that can be reasonably inferred as being required for its completion as if such items were expressly mentioned herein. All the provisions of RA No. 9184 and its 2016 revised IRR, including the Generic Procurement Manual, and associated issuances, constitute the primary source for the terms and conditions of the Contract, and thus, applicable in contract implementation. Herein clauses shall serve as the secondary source for the terms and conditions of the Contract.

This is without prejudice to Sections 74.1 and 74.2 of the 2016 revised IRR of RA No. 9184 allowing the GPPB to amend the IRR, which shall be applied to all procurement activities, the advertisement, posting, or invitation of which were issued after the effectivity of the said amendment.

2. **Sectional Completion of Works**

If sectional completion is specified in the **Special Conditions of Contract (SCC)**, references in the Conditions of Contract to the Works, the Completion Date, and the Intended Completion Date shall apply to any Section of the Works (other than references to the Completion Date and Intended Completion Date for the whole of the Works).

3. **Possession of Site**

3.1 The Procuring Entity shall give possession of all or parts of the Site to the Contractor based on the schedule of delivery indicated in the **SCC**, which corresponds to the execution of the Works. If the Contractor suffers delay or incurs cost from failure on the part of the Procuring Entity to give possession in accordance with the terms of this clause, the Procuring Entity's Representative shall give the Contractor a Contract Time Extension and certify such sum as fair to cover the cost incurred, which sum shall be paid by Procuring Entity.

3.2 If possession of a portion is not given by the above date, the Procuring Entity will be deemed to have delayed the start of the relevant activities. The resulting adjustments in contract time to address such delay may be addressed through contract extension provided under Annex "E" of the 2016 revised IRR of RA No. 9184.

4. **The Contractor's Obligations**

The Contractor shall employ the key personnel named in the Schedule of Key Personnel indicating their designation, in accordance with **ITB** Clause 10.3 and specified in the **BDS**, to carry out the supervision of the Works.

The Procuring Entity will approve any proposed replacement of key personnel only if their relevant qualifications and abilities are equal to or better than those of the personnel listed in the Schedule.

5. **Performance Security**

5.1. Within ten (10) calendar days from receipt of the Notice of Award from the Procuring Entity but in no case later than the signing of the contract by both parties, the successful Bidder shall furnish the performance security in any of the forms prescribed in Section 39 of the 2016 revised IRR.

5.2. The Contractor, by entering into the Contract with the Procuring Entity, acknowledges the right of the Procuring Entity to institute action pursuant to RA No. 3688 against any subcontractor be they an individual, firm, partnership, corporation, or association supplying the Contractor with labor, materials and/or equipment for the performance of this Contract.

6. Site Investigation Reports

The Contractor, in preparing the Bid, shall rely on any Site Investigation Reports referred to in the **SCC** supplemented by any information obtained by the Contractor.

7. Warranty

7.1. In case the Contractor fails to undertake the repair works under Section 62.2.2 of the 2016 revised IRR, the Procuring Entity shall forfeit its performance security, subject its property(ies) to attachment or garnishment proceedings, and perpetually disqualify it from participating in any public bidding. All payables of the GOP in his favor shall be offset to recover the costs.

7.2. The warranty against Structural Defects/Failures, except that occasioned-on force majeure, shall cover the period from the date of issuance of the Certificate of Final Acceptance by the Procuring Entity. Specific duration of the warranty is found in the **SCC**.

8. Liability of the Contractor

Subject to additional provisions, if any, set forth in the **SCC**, the Contractor's liability under this Contract shall be as provided by the laws of the Republic of the Philippines.

If the Contractor is a joint venture, all partners to the joint venture shall be jointly and severally liable to the Procuring Entity.

9. Termination for Other Causes

Contract termination shall be initiated in case it is determined *prima facie* by the Procuring Entity that the Contractor has engaged, before, or during the implementation of the contract, in unlawful deeds and behaviors relative to contract acquisition and implementation, such as, but not limited to corrupt, fraudulent, collusive, coercive, and obstructive practices as stated in **ITB** Clause 4.

10. Dayworks

Subject to the guidelines on Variation Order in Annex "E" of the 2016 revised IRR of RA No. 9184, and if applicable as indicated in the **SCC**, the Dayworks rates in the Contractor's Bid shall be used for small additional amounts of work only when the Procuring Entity's Representative has given written instructions in advance for additional work to be paid for in that way.

11. Program of Work

11.1. The Contractor shall submit to the Procuring Entity's Representative for approval the said Program of Work showing the general methods, arrangements, order, and timing for all the activities in the Works. The submissions of the Program of Work are indicated in the **SCC**.

- 11.2. The Contractor shall submit to the Procuring Entity's Representative for approval an updated Program of Work at intervals no longer than the period stated in the **SCC**. If the Contractor does not submit an updated Program of Work within this period, the Procuring Entity's Representative may withhold the amount stated in the **SCC** from the next payment certificate and continue to withhold this amount until the next payment after the date on which the overdue Program of Work has been submitted.

12. Instructions, Inspections and Audits

The Contractor shall permit the GOP or the Procuring Entity to inspect the Contractor's accounts and records relating to the performance of the Contractor and to have them audited by auditors of the GOP or the Procuring Entity, as may be required.

13. Advance Payment

The Procuring Entity shall, upon a written request of the Contractor which shall be submitted as a Contract document, make an advance payment to the Contractor in an amount not exceeding fifteen percent (15%) of the total contract price, to be made in lump sum, or at the most two installments according to a schedule specified in the **SCC**, subject to the requirements in Annex "E" of the 2016 revised IRR of RA No. 9184.

14. Progress Payments

The Contractor may submit a request for payment for Work accomplished. Such requests for payment shall be verified and certified by the Procuring Entity's Representative/Project Engineer. Except as otherwise stipulated in the **SCC**, materials and equipment delivered on the site but not completely put in place shall not be included for payment.

15. Operating and Maintenance Manuals

- 15.1. If required, the Contractor will provide "as built" Drawings and/or operating and maintenance manuals as specified in the **SCC**.
- 15.2. If the Contractor does not provide the Drawings and/or manuals by the dates stated above, or they do not receive the Procuring Entity's Representative's approval, the Procuring Entity's Representative may withhold the amount stated in the **SCC** from payments due to the Contractor.

Section V. Special Conditions of Contract

Notes on the Special Conditions of Contract

Similar to the BDS, the clauses in this Section are intended to assist the Procuring Entity in providing contract-specific information in relation to corresponding clauses in the GCC found in Section IV.

The Special Conditions of Contract (SCC) complement the GCC, specifying contractual requirements linked to the special circumstances of the Procuring Entity, the Procuring Entity's country, the sector, and the Works procured. In preparing this Section, the following aspects should be checked:

- a. Information that complements provisions of the GCC must be incorporated.
- b. Amendments and/or supplements to provisions of the GCC as necessitated by the circumstances of the specific purchase, must also be incorporated.

However, no special condition which defeats or negates the general intent and purpose of the provisions of the GCC should be incorporated herein.

Special Conditions of Contract

GCC Clause	
2	<i>No further instructions</i>
4.1	The Procuring Entity shall give possession of all parts of the Site to the Contractor within one (1) day after the receipt of Notice to Proceed and Commence Work.
6	The site investigation reports are: <i>[list here the required site investigation reports.]</i>
7.2	<p><i>[Select one, delete the other.]</i></p> <p><i>[In case of permanent structures, such as buildings of types 4 and 5 as classified under the National Building Code of the Philippines and other structures made of steel, iron, or concrete which comply with relevant structural codes (e.g., DPWH Standard Specifications), such as, but not limited to, steel/concrete bridges, flyovers, aircraft movement areas, ports, dams, tunnels, filtration and treatment plants, sewerage systems, power plants, transmission and communication towers, railway system, and other similar permanent structures:]</i> Fifteen (15) years.</p> <p><i>[In case of semi-permanent structures, such as buildings of types 1, 2, and 3 as classified under the National Building Code of the Philippines, concrete/asphalt roads, concrete river control, drainage, irrigation lined canals, river landing, deep wells, rock causeway, pedestrian overpass, and other similar semi-permanent structures:]</i> Five (5) years.</p> <p><i>[In case of other structures, such as bailey and wooden bridges, shallow wells, spring developments, and other similar structures:]</i> Two (2) years.</p>
10	a. Dayworks are applicable at the rate shown in the Contractor's original Bid.
11.1	The Contractor shall submit the Program of Work to the Procuring Entity's Representative within Ten (10) days of delivery of the Notice of Award.
11.2	The amount to be withheld for late submission of an updated Program of Work is Ten Percent (10%) .
13	The amount of the advance payment is 15% upon request subject to submission to and acceptance by the PE of a letter of credit or equivalent value from a commercial bank (annex E, 4.2)
14	<i>No Further Instructions</i>
15.1	<p>The date by which operating and maintenance manuals are required is <i>within 10 (Ten) days after the Notice to Proceed and Commence Work</i></p> <p>The date by which "as built" drawings are required is at least Thirty (30) calendar days from the receipt of Completion and Turn-Over</p>
15.2	The amount to be withheld for failing to produce "as built" drawings and/or operating and maintenance manuals by the date required is Ten percent (10 %) .

Section VI. Specifications

Notes on Specifications

A set of precise and clear specifications is a prerequisite for Bidders to respond realistically and competitively to the requirements of the Procuring Entity without qualifying or conditioning their Bids. In the context of international competitive bidding, the specifications must be drafted to permit the widest possible competition and, at the same time, present a clear statement of the required standards of workmanship, materials, and performance of the goods and services to be procured. Only if this is done will the objectives of economy, efficiency, and fairness in procurement be realized, responsiveness of Bids be ensured, and the subsequent task of bid evaluation facilitated. The specifications should require that all goods and materials to be incorporated in the Works be new, unused, of the most recent or current models, and incorporate all recent improvements in design and materials unless provided otherwise in the Contract.

Samples of specifications from previous similar projects are useful in this respect. The use of metric units is mandatory. Most specifications are normally written specially by the Procuring Entity or its representative to suit the Works at hand. There is no standard set of Specifications for universal application in all sectors in all regions, but there are established principles and practices, which are reflected in these PBDs.

There are considerable advantages in standardizing General Specifications for repetitive Works in recognized public sectors, such as highways, ports, railways, urban housing, irrigation, and water supply, in the same country or region where similar conditions prevail. The General Specifications should cover all classes of workmanship, materials, and equipment commonly involved in construction, although not necessarily to be used in a particular Works Contract. Deletions or addenda should then adapt the General Specifications to the particular Works.

Care must be taken in drafting specifications to ensure that they are not restrictive. In the specification of standards for goods, materials, and workmanship, recognized international standards should be used as much as possible. Where other particular standards are used, whether national standards or other standards, the specifications should state that goods, materials, and workmanship that meet other authoritative standards, and which ensure substantially equal or higher quality than the standards mentioned, will also be acceptable. The following clause may be inserted in the SCC.

Sample Clause: Equivalency of Standards and Codes

Wherever reference is made in the Contract to specific standards and codes to be met by the goods and materials to be furnished, and work performed or tested, the provisions of the latest current edition or revision of the relevant standards and codes in effect shall apply, unless otherwise expressly stated in the Contract. Where such standards and codes are national, or relate to a particular country or region, other authoritative standards that ensure a substantially equal or higher quality than the standards and codes specified will be accepted subject to the Procuring Entity's Representative's prior review and written consent. Differences between the standards specified and the proposed alternative standards shall be fully described in writing by the Contractor and submitted to the Procuring Entity's Representative at least twenty-eight (28) days prior to the date when the Contractor desires the Procuring Entity's Representative's consent. In the event the Procuring Entity's Representative determines that such proposed deviations do not ensure substantially equal or higher quality, the Contractor shall comply with the standards specified in the documents.

These notes are intended only as information for the Procuring Entity or the person drafting the Bidding Documents. They should not be included in the final Bidding Documents.



REPUBLIC OF THE PHILIPPINES
WESTERN MINDANAO STATE UNIVERSITY
 NORMAL ROAD, BALIWASAN, ZAMBOANGA CITY
PHYSICAL PLANT AND ENGINEERING SERVICES



WMSU - PPEE - FR - 007A.00
 Effective Date: 08 - Sep - 2021

PROJECT TITLE: CONSTRUCTION OF AL-FRESCO FOR THE UNIVERSITY FOOD SERVICE CENTER
PROJECT LOCATION: WMSU-MAIN CAMPUS, LOT 2 NORMAL ROAD, BALIWASAN, ZAMBOANGA CITY
SUBJECT: SUMMARY OF WORKS, GENERAL REQUIREMENTS AND TECHNICAL SPECIFICATIONS

I. SUMMARY OF WORKS

A. INTRODUCTION

The works in this Contract for the **CONSTRUCTION OF AL-FRESCO FOR THE UNIVERSITY FOOD SERVICE CENTER** to be located at **WMSU-MAIN CAMPUS, LOT-2 NORMAL ROAD, BALIWASAN, ZAMBOANGA CITY**. The **WMSU-Physical Plant and Engineering Services** shall perform the construction management services including the management of projects deliverables and all issues arising from this Contract Document.

B. NAME OF PROJECT

CONSTRUCTION OF AL-FRESCO FOR THE UNIVERSITY FOOD SERVICE CENTER to be located at **WMSU-MAIN CAMPUS, LOT 2 NORMAL ROAD, BALIWASAN, ZAMBOANGA CITY**.

C. START AND COMPLETION OF DATES

The Contractor shall be held responsible for meeting intermediate dates as contained within the attached documents. Such dates are binding, and damages will apply to intermediate as well as end dates:

Start on Site : Based on date stipulated on Notice to Proceed

Punch listing :

All Works Complete :



D. WORK AREAS

All works shall be done within the confine of the lot boundaries. Provides temporary work enclosures on all sides affected by building repair works. Provide appropriate announcements boards and signage's, to include all construction permits, clearances, and duration of works.

E. SCOPE OF WORK - GENERAL

1. The drawings, technical specifications and BOQ are intended to be complementary. Anything shown on the drawings but not mentioned in the specifications and vice-versa shall be done as if were mentioned or indicated in both. Anything not expressly set forth in either but is reasonably implied or required in the process of completing any item within the scope of work shall be taken into account as though specifically mentioned or indicated in both.
2. The Contractor shall furnish all materials, labor and necessary equipment to complete the project. Construction shall be under the direct supervision of the WMSU - Physical Plant and Engineering Services.
3. Procurement of all necessary permits, licenses, inspection and other fees that may be required by the Local or National authorities shall be secured at the expense of the Contractor.
4. All changes in plans, such as addition, alteration and substitution of materials to be used shall have prior approval of the WMSU - Physical Plant and Engineering Services Director.
5. The WMSU - Physical Plant and Engineering Services shall in no way be liable for any damage/destruction of work or for the expense of replacement. The Contractor shall provide protections and be responsible for their own works at all times. Any damage in their own part shall be replaced or repaired at their own expense.
6. Unless otherwise specified, all materials shall be new and of best quality of their respective kinds of purpose.
7. Where no mention is made in this specification or in plans regarding the kind of materials, reference should be made to the WMSU - Physical Plant and Engineering Services Director as to the kind of work to which it pertains.



-
- E.1 GENERAL REQUIREMENTS**
 - a. Site Temporary Perimeter Fence
 - b. 8' x 8' Tarpaulin Billboard
 - c. Mobilization and Demobilization

 - E.2 DEMOLITION / EARTH WORKS**
 - a. Demolition/Removal of Structure & Obstructions
 - b. Excavation & Backfill
 - c. Filling Gravel Bedding Materials including compaction

 - E.4 CONCRETE WORKS**
 - a. Reinforced Concrete for Footings / FTB and Wall Footings
 - b. Reinforced Concrete and Slab-on-fill

 - E.5 FORMS AND FALSEWORKS**
 - a. Building Formworks and Falseworks

 - E.6 CARPENTRY AND JOINERY WORKS**
 - a. Cabinets

 - E.7 TILE WORKS**
 - a. Synthetic Granite Countertop

 - E.8 METAL WORKS**
 - b. Roof Truss
 - c. Steel Column

 - E.9 ROOFING WORKS**
 - a. Pre-Painted G.I. Sheet Roofing (H-Rib Type Long Span)
 - b. Thermal Roof Insulation



E.10 PAINTING WORKS

- a. Paint on Metal Surface
- b. Paint on Concrete/Masonry Surface
- c. Paint on Wood Surface

E.11 PLUMBING WORKS

- a. PPR- Pipes with Fittings
- b. PVC (Soil)- Pipes with Fittings
- c. Lavatory, Counter Top, Complete Accessories (Manually Operated)

E.12 STORM DRAINAGE

- a. Stainless Steel Sheet Gutter with Downspout

E.13 STORM DRAINAGE

- a. Appliances

E.14 ELECTRICAL WORKS

- a. Conduits, Boxes, & Fittings
- b. Wires & Wiring Devices
- c. Lighting/ Power Fixtures (Lights, Switches & Outlets)
- d. Panel Board including Circuit Breaker

E.13 AS-BUILT (RECORD) DRAWINGS AND RELATED DOCUMENTS

II. GENERAL REQUIREMENTS

The works shall be carried out according to the Technical Specifications and shall govern the methods of construction and the kind of materials to be used for the **CONSTRUCTION OF AL-FRESCO FOR THE UNIVERSITY FOOD SERVICE CENTER** as shown in the plans and detail drawings.

The plans, detailed drawings, BOQ and this Specification, shall be considered as complementing to each other, so that what is mentioned or shown in one, although not mentioned or shown in the other, shall be considered as appearing on



REPUBLIC OF THE PHILIPPINES
WESTERN MINDANAO STATE UNIVERSITY
NORMAL ROAD, BALIWASAN, ZAMBOANGA CITY
PHYSICAL PLANT AND ENGINEERING SERVICES



WMSU - PPES 478 - 967A, 86
Effective Date: 08 - Sep - 2021

both, IN CASE OF DISCREPANCY, BETWEEN THE TECHNICAL SPECIFICATIONS AND APPROVED DETAILED DRAWINGS,
THE TECHNICAL SPECIFICATIONS SHALL PREVAIL.

All works shall be carried out in coordination with carpentry, masonry, electrical, and other building works. Materials not conforming to Specifications shall be rejected.

A. GENERAL CONDITIONS

Prior to execution of works, the Contractor shall verify the existing condition of the structural and project boundaries. Total demolition of existing portion of the structure within the proposed project site is required.

B. CONTRACTOR'S OFFICE & ACCOMODATION

Provision of Contractor's Temporary Facility is required. The structure of the building shall be adequate, rainproof, spacious, airy and hygienic with proper lightings and toilet facilities. The area shall be kept neat and clean. Any garbage or sewage shall be disposed at a location and in a manner approved by WMSU-Physical Plant and Engineering Services.

Space allocation for storage of various materials such as cement, reinforcement steel and petroleum products, etc. shall be clearly separated to avoid contamination. Petroleum products shall be stored and handled in a way that avoids contamination of ground water. Workshops shall be installed with oil and grease traps for the same purpose.

The Contractor shall provide, at its own expense, adequate temporary accommodation and toilet facilities for its own workmen and keep the same in good conditions. The Contractor shall construct suitable soak pits along with room of pit-type latrines. Sufficient water must be provided and maintained in the toilets. Proper methods of sanitation and hygiene should be employed during the whole project duration. The above-mentioned temporary structures shall be removed on the completion of the works at Contractor's own cost. All materials and labor cost shall be provided by the Contractor.

The Contractor shall provide at his own expense calibrated meters for each water and electricity connection and pay billings thereof.

C. SAFETY MEASURES

The Contractor shall be responsible for safety of all workmen and other persons entering the Works and shall be at his own expense take all measures necessary to ensure their safety. Such measures shall be subject to the approval of WMSU-Physical Plant and Engineering Services shall include but not limited to:

1. Appropriate personal protective equipment (helmet, dust mask, safety shoes, vest, and hand gloves) must be



provided and worn by workmen.

2. First Aid Cabinet must be fully equipped and readily available for treatment of sickness and injuries;
3. Provide safety and emergency regulations for fire and electric shock prevention;
4. Safe control of flowing water; and
5. Conduct regular safety meeting.

D. NOTICE BOARD

The Contractor shall erect notice board (3' x 8') at the site giving details of the Contract in the format provided by CQA. It shall be removed upon receipt of Certificate of Completion.

PROJECT TITLE	LOCATION
CONTRACTOR	:
DATE STARTED	:
CONSTRUCTION COMPLETION DATE	:
CONSTRUCTION DURATION	:
CONTRACT AMOUNT	:
SOURCE OF FUND	:
IMPLEMENTING OFFICE	: WESTERN MINDANAO STATE UNIVERSITY
WESTERN MINDANAO STATE UNIVERSITY <small>NORMAL ROAD, BARANGAY BALIWASAN, ZAMBOANGA CITY</small>	

E. ENVIRONMENTAL PROTECTION WORKS

The environment means surrounding area including human and natural resources to be affected by execution and after completion of works. The Contractor shall take all precautions for safeguarding the environment during the course of construction of the works. He shall abide by all prevalent laws, rules and regulations governing pollution and environmental protection. The Contractor shall prohibit employees from cutting trees and the former shall be the responsible for the action of the latter.

Waste materials must be collected, stored, and transported to approved dump / disposal area.



The WMSU-Physical Plant and Engineering Services shall have the power to disallow the method of construction and / or the use of any borrow / quarry area, if the stability and safety of the works or any adjacent structure will be compromised, or there is undue interference with the natural or artificial drainage, or the method or use of the area will promote undue erosion.

F. MATERIALS AND WORKMANSHIP

All materials and equipment used in the Works shall be new and best in quality, design and performance. All materials used shall be of the quality specified and where not specified shall be in accordance with the relevant Standards Acceptable by the University Architect or the Physical Plant and Engineering Services Director.

All materials and work necessary for the efficient functioning of the installation shall be provided even if not explicitly mentioned in the Contract Documents.

All works shall be carried out to the best engineering practice by fully competent tradesmen.

G. VARIATION ORDERS

A Change Order may be issued by Physical Plant and Engineering Services to cover any increase/decrease in quantities of original work item in the contract.

An Extra Work Order may be issued by Physical Plant and Engineering Services to cover the introduction of new work necessary for the completion, improvement or protection of the project which was not included as items of work in the original contract, such as, where there are subsurface or latent physical conditions at the site differing materially from those indicated in the contract, or where there are duly unknown physical conditions at the site of an unusual nature differing materially from those ordinarily encountered and generally recognized as inherent in the work or character provided for in the contract.

In Under no circumstances shall contractor proceed to commence work under any Change Order or Extra Work Order unless it has been approved by the Director of the Physical Plant and Engineering Services or his duly authorized representative.

H. DELAYS

In the event the Contractor falls behind the Project Schedule, then he may be required to accelerate his work. In such cases, the Contractor shall immediately apply appropriate extra resources at his own expense until such time as the schedule slippage has been recovered.



I. SITE DIARY OR MANUAL FIELD / LOGBOOK

The Contractor shall keep Site Diary or Manual Field Book wherein full details of the work carried out during each day shall be fully recorded. The Site Diary or Manual Field Book shall be available for inspection by the WMSU-Physical Plant and Engineering Services anytime during normal office hours. It shall include:

1. Project Name;
2. Contractor's Name;
3. Contractor's Representative;
4. Weather Conditions, rainfall, and water level (indicate "NO WORK" if unworkable days)
5. Description, quality, and location of work performed;
6. Shift and working hours;
7. Number and category of workers working at the site;
8. Test carried out and results;
9. Inspection carried out by WMSU-PPES;
10. Problems or abnormal occurrences;
11. DEFECTIVE / Non-Compliant Work & Corrective Action.
12. Site instructions;
13. Visitors; and
14. Accidents (if any)

III. TECHNICAL SPECIFICATIONS

A. GENERAL REQUIREMENTS

A-1 Site Temporary Perimeter Fence

1. The Contractor shall provide temporary perimeter fence constructed using 8ft wide Laminated Blue/Orange Sheet stapled or nailed in coco lumber at every 1.2 meters distance, 2 meters offset from the construction site and a minimum height of 2.4 meters.
2. The contractor, upon completion of work, shall remove the temporary perimeter fence and all temporary facilities and clear the site acceptable to the procuring entity.



A-II. 8' x 8' Tarpaulin Billboard

1. The Contractor shall erect a (8' x 8') notice board at the project site, giving details of the Contract in the format provided by the Commission on Audit (COA). The said project billboard will be removed only upon receipt of Certificate of Completion.

PROJECT TITLE LOCATION	
CONTRACTOR	:
DATE STARTED	:
CONSTRUCTION COMPLETION DATE	:
CONSTRUCTION DURATION	:
CONTRACT AMOUNT	:
SOURCE OF FUND	:
IMPLEMENTING OFFICE	: WESTERN MINDANO STATE UNIVERSITY


WESTERN MINDANAO STATE UNIVERSITY
 NORMAL ROAD, BARANGAY BALIWASAN, ZAMBOANGA CITY

A-III. Occupational Safety and Health Program

1. The Contractor shall be responsible for safety of all workmen and other persons entering the project site and shall be all at his own expense to take all necessary measures to ensure their safety.
2. All Safety Measures to be taken shall be subjected to the approval of the WMSU-Physical Plant and Engineering Services Director and shall include but not limited to the following:
 - a. Appropriate Personal Protective Equipment such as hard hats, dusk mask, safety shoes, reflectorized vest, hand gloves and the like shall be provided and worn by all workmen on site;
 - b. First Aid Cabinet must be fully equipped and readily available for treatment of sickness and/or injuries;



- c. Provide Safety emergency regulations for fire and electric shock preventions;
- d. Safe control of flowing water, and
- e. Conduct regular safety meeting.

A-IV. Mobilization and Demobilization

1. The work shall consist of the mobilization and demobilization of the contractor's forces and equipment necessary for performing the work required under the contract.
2. It shall be computed based on the equipment requirements of the project stipulated in the proposal and contract booklet.
3. It shall not exceed 1% of the Estimated Direct Cost (EDC) of the civil works items.
4. Mobilization shall include all activities and associated costs for transportation of Contractor's personnel, equipment, and operating supplies to the site; building; and other necessary general facilities for the contractor's operation at the site.
5. Demobilization shall include all activities and costs for the transportation of personnel, equipment and supplies not required or included in the contract from the site; including the disassembly, removal and site cleanup, of offices, buildings and other facilities assembled on the site specifically for this project.
6. This work includes mobilization and demobilization required at the time of award.
7. If additional mobilization and demobilization activities and costs are required during the performance of the contract as result of changed, deleted or added items of work for which the Contractor is entitled to an adjustment in contract price, compensation for such cost will be included in the price adjustment for the item or items of work changed or added.

A-V. Permits and Clearances

1. All works covered by this specification shall be complete and functional in all respects and shall comply with the rules, regulations and requirements of local authorities having jurisdiction over the installations and all other relevant statutory requirements.
2. The Contractor shall apply from all local authority necessary permits and certificates. These shall include but are not limited to building permit, occupancy permits and associated construction permits. The timing for the applications shall be such that, to the opinion of the WMSU-Physical Plant and Engineering Services, the overall work progress will not be affected.
3. Upon completion of the Works, the Contractor shall carry out all necessary tests on the various systems of the installations as required by agency or the local authorities, and shall apply for and obtain all certificates and approval from the relevant authorities for the work done and shall submit same to WMSU-Physical Plant and Engineering Services.
4. The Contractor shall arrange for local authorities' inspections and obtain the required approval and permits or



certificates from the local authority at a time as directed by WMSU-Physical Plant and Engineering Services.

5. The Contractor is to note that the contracted works will not be considered as practically complete prior to the receipt of the approval of certificates.

B. DEMOLITION / EARTH WORKS

B.I Demolition/Removal of Structure & Obstructions

1. Works in this item herein include the removal of portion of landscape and concrete slab, including handling, salvaging, piling, and disposing of the cleared materials with all leads and lifts.
2. Materials obtained from the scope of demolition and removal of items inside the structure shall be properly turned over WMSU-Property Management Office (PMO) for assessment. Demolished materials assessed by PMO for discarding shall be disposed of by the Contractor.
3. Burning of demolished or any unwanted materials shall not be allowed.

B.II Excavation and Backfill

1. The Contractor shall verify the dimensions and levels shown on the drawings and shall notify the Physical Plant and Engineering Services or representatives of any discrepancy which may affect the dimensions or levels of such parts of the Works. Such notification by the Contractor shall be given in sufficient time to allow the agency to prepare drawings or schedule showing his amended requirements.
2. Excavation shall be taken down to the depths shown on the drawings or to such depths as required by the Physical Plant and Engineering Services. Where necessary, the Contractor shall have on hand sufficient pumping equipment for dewatering during the process of excavation and construction.

B.III Filling of Gravel Bedding Materials Including Compaction

1. The area to be filled with gravel bedding shall be excavated to the required depth and dimensions, removing any unsuitable or unstable materials.
2. Excavated areas shall be prepared to achieve the specified grade, slope, and contour as per project plans and specifications.
3. Gravel materials shall be sourced from approved quarries or sources and shall meet Philippine standards for construction materials.
4. All filling shall be carried out in dry conditions.
5. Filling material shall not be placed in excavations below formation level in cuttings until all water has been drained or pumped from the excavation and the Physical Plant and Engineering Services is satisfied that filling may commence.



6. Gravel materials shall be selected based on their particle size, gradation, and suitability for the intended application.
7. Each layer of gravel shall be spread evenly and compacted to achieve the specified density and stability.
8. Compaction shall be carried out in accordance with the Philippine standards and engineering specifications to achieve the required density and load-bearing capacity.

C. CONCRETE WORKS

1. Materials for concrete shall be from approved source by the Engineer-In-Charge.
2. All concrete works shall be done in accordance with the standard specification for reinforced concrete.
3. Cement to be used shall be Portland cement or any brand in the market that passes ASTM Standard for Portland Cement.
4. Reinforced concrete-3000 PSI @ 28-days. Concrete mix shall be subject to adjustment to attain the required strength or desired mix consistency, subject to approval of the Engineer-in-Charge.
5. Portland cement, Type 1
6. Manufactured or river-run run Gravel G1 for structural concrete, $\frac{3}{4}$ " max properly graded
7. Coarse Sand for structural concrete
8. Water: Use potable water free from alkaline or deleterious substance that may affect the strength of concrete. Use of rain water will not be permitted.
9. All materials shall be free from clay, lumps or any deleterious object or matter that will impair the strength of concrete.
10. Mix proportion of concrete for Footings, Beams & Columns shall be 1: 2: 4 (Cement: Sand: Gravel) in accordance with current industry standards or best practices.
11. Mix proportion of concrete for Floor, Slabs & Ramps shall be 1: 2 $\frac{1}{2}$: 5 (Cement: Sand: Gravel) in accordance with current industry standards or best practices.
12. Slump of concrete shall not exceed 3 inches
13. Placement of concrete shall be in accordance to standard norms, when using portable concrete mixers.
14. Cure concrete sprinkling water and wetted continuously for 7-day period
15. Main Steel reinforcements shall be ASTM A615, deformed steel bars, Grade 60. Stirrups shall be ASTM Grade 40.
16. Supply, fabricate and install reinforcing steel as shown on Drawings. Placing of steel reinforcements shall be in accordance with current industry (local) code (or ACI-347)
17. Tie wires shall be Gauge 16
18. Provide concrete spacers or plastic spacers to meet the required concrete cover as shown on Drawings.
19. Steel reinforcements shall be free from mill scales, rusts, oils, contamination that will impair the bonding property to concrete.



20. Storage

- a. All reinforcements shall be delivered to the site either in straight lengths or cut and bent.
- b. No reinforcement shall be accepted in long lengths, which have been transported bent over double.
- c. Any reinforcement, which is likely to remain in storage for a long period, shall be protected from the weather to avoid corrosion and pitting.
- d. All reinforcement which has become corroded or pitted to an extent which, in the opinion of PPES, will affect its properties, shall either be removed from site or may be tested for compliance at the contractor's expense.
- e. Reinforcement shall be stored at least 150 mm above the ground on a clean area free of mud and dirt and sorted according to category, quality, and diameter.

D. FORMS AND FALSEWORKS

D4. Formworks and Falseworks (Kitchen Countertop and Floor Slab)

1. All forms shall be designed by the Contractor for a safe construction activity and installed to dimensions shown on the Drawings.
2. All materials for formworks shall be durable and free from warps, dilapidation and shall produce a neat surface upon stripping.
3. All joints shall be free from mortar leak during placement of concrete.
4. Stripping of forms shall only commence after the concrete has gained sufficient strength (min of 7 days) for major structural elements.
5. All Formworks shall be carefully removed without shock or disturbance to the concrete.
6. No formworks shall be removed until the concrete has attained sufficient strength to support its own weight and carry loads that maybe placed on it.
7. Side forms of beams and girders may be removed earlier than bottom forms, but the additional post or shoring must be placed under the beam or girder until it attains the sufficient strength.
8. The minimum periods, which shall elapse between completion of placing concrete and removal of forms, are given below:

	Minimum Time	Minimum % Design Strength
Beams	14 Days	80%
Slabs	14 Days	70%
Columns	2 Days	70%
Sides of Beams	1 Day	70%



E. CARPENTRY AND JOINERY WORKS

E-1. Fabrication of Cabinets, Shelves, Doors and Wall partition

1. This work item includes the provision and materials for the fabrication and installation of cabinets, shelves, door and wall partition as specified in the drawings.
2. The contractor shall furnish all materials, tools, equipment and labor required for the completion and satisfactory performance of work in strict compliance with this Materials should clean and dry and free from rust, dents, cracks and other imperfections thereby impairing its strength, durability and appearance.
3. All exposed woodwork shall be smoothly dressed and well sandpapered. All joints specifications and approved plans/drawings.
4. All materials to be used under this work shall be of approved quality and connections shall be glued and properly nailed or screwed.
5. All works under this item shall be done with complete accessories as specified in the drawings.

F. TILE WORKS

F-1. Synthetic Granite Countertop

1. Works herein shall include supply and placing of Synthetic Glazed Granite tiles as indicated in the plans and drawings.
2. All tiles of pantry countertop shall be finished with 6mm thick x 600mm x 600mm Synthetic Granite tiles.
3. Tiles shall be installed by applying heavy duty adhesive to backs of tile and firmly pressing tile into the floating coat to true plane and position.
4. Joints shall be maintained uniformly wide by aligning spacer lugs on tile edges. All joint lines shall be kept straight and true to profiles, plumbed and internal corners rounded using the appropriate trims.
5. 6mm PVC tile trim shall be used for the edge of countertop tiles.
6. Color and texture of tiles shall be verified by WMSU-Physical Plant and Engineering Director / University Architect.
7. Provide Sample.

G. METAL WORKS

G-1. ROOF TRUSS

1. Works herein include supply, fabrication and installation of steel half truss type roof framing system as shown in the



plans. Before assembling and installing the roof system, the Contractor shall submit sample of all roof framing member sections for approval of University Engineer.

- All steel materials to be used herein shall be free of rust, dirt and oil. All materials to be used herein shall be brand new and passing Philippine Standard material quality control requirements. It shall have cast, stamp or indelible marks on it like manufacturer's trademarks or name, weight, type or classes of products when so required.
- Welding works being done for rafters shall be verified by University Engineer for welding penetration and length requirements.
- Steel purlins are then placed equidistantly as per plans and should have angle straps and sag rods to prevent lateral buckling. It should be placed properly to fit the length of the roofing sheets.
- The top of the ridge line purlins should be at the same plane. All steel materials herein shall be painted with metal primer for rust protection. The Contractor shall provide temporary erection bracing and shoring, and make actual measurements in the field prior to fabrication and installation of roof framing system.
- Materials steel and metals for the Works shall meet the requirements of ASTM A36, hot-rolled shapes and plates.
- All steels shall be primed with epoxy-based paint with 2-3 finish coats, grey colored paint. Substrate preparation shall meet the requirements of the applicable Clauses of the Steel Structures Painting Council, for industrial type of construction. All surfaces shall be free from mill scale, rusts, oils or any contaminants detrimental to adhesion of paint.
- Welding works shall be in accordance with Structural Welding Code (American Welding Society-D1.1, latest edition). Welding electrodes shall be as indicated in drawings, minimum, meeting the requirements of AWS A.5. All welders shall meet the qualifications under the AWS Codes and standards.
- All Works under this item shall be subject to verification by the University Engineer prior to commencement of fabrication. Contractor is to submit SHOP DRAWINGS for WMSU-PPES Director review prior to execution.
- Roof framing Trusses/Rafters shall be constructed, erected, and properly anchored to the roof beams or columns as indicated in drawings.

G-L STEEL COLUMN

- Steel columns shall be fabricated from structural steel sections in compliance with Philippine National Standards and the National Structural Code of the Philippines.
- Works herein include supply, fabrication and installation of steel columns as shown in the plans. Before assembling and installing the steel columns, the Contractor shall submit sample of all steel column sections for approval of University Engineer.
- All steel materials to be used herein shall be free of rust, dirt and oil. All materials to be used herein shall be brand new and passing Philippine Standard material quality control requirements. It shall have cast, stamp or indelible marks on it like manufacturer's trademarks or name, weight, type or classes of products when so required.
- Steel columns shall be fabricated by a certified steel fabrication facility in accordance with approved shop drawings and fabrication



standards.

5. Fabricated steel columns shall be delivered to the project site in good condition and shall be protected from damage during transportation and storage.
6. Steel columns shall be installed plumb, level, and square, with proper alignment and bracing to ensure structural integrity.
7. Installation shall be performed using suitable lifting equipment and techniques to prevent damage to the columns and ensure safe handling.
8. Columns shall be anchored securely to the foundation or structural members as per project specifications and engineering requirements.
9. Materials steel and metals for the Works shall meet the requirements of ASTM A36, hot-rolled shapes and plates.
10. All steels shall be primed with epoxy-based paint with 2- finish coats, grey colored paint. Substrate preparation shall meet the requirements of the applicable Clauses of the Steel Structures Painting Council, for industrial type of construction. All surfaces shall be free from mill scale, rusts, oils or any contaminants detrimental to adhesion of paint.
11. Welding works shall be in accordance with Structural Welding Code (American Welding Society-D1.1, latest edition). Welding electrodes shall be as indicated in drawings, minimum, meeting the requirements of AWS A5. All welders shall meet the qualifications under the AWS Codes and standards.
12. All Works under this item shall be subject to verification by the University Engineer prior to commencement of fabrication. Contractor is to submit SHOP DRAWINGS for WMSU-PPES Director review prior to execution.

H. ROOFING WORKS

H-I. PRE-PAINTED G.I. SHEET ROOFING (HI-RIB TYPE-LONG SPAN)

1. Works herein shall include supply and installation of 0.60mm thick pre-painted Rib-Type Long Span roofing sheets, roofing sheets and accessories as shown in the plans.
2. All roofing materials should be free from rust, dirt, and oil during time of installation. 2-1/2" TekScrews and 1/8 x 3/8 rivets shall be placed at top of corrugation and shall have gutter or silicon sealant application to prevent leakage.
3. Unnecessary holes made on the roofing materials shall be rejected.
4. Roofing sheets shall have the required thickness, color, and profile as specified in the project plans.
5. Stainless steel or corrosion resistant fasteners shall be used to secure the roofing sheets to the roof structure, providing secure attachment without the risk of rust or deterioration.
6. The whole pre-painted g.i. sheet roofing works shall be guaranteed against leaking, paint cracking / falling off & uneven discoloration.
7. All Works under this item shall be subject to verification by the WMSU-Physical Plant and Engineering Services prior to commencement of fabrication, Contractor is to submit SHOP DRAWINGS for WMSU-PPES Director review prior to execution.

H-II THERMAL ROOF INSULATION



1. Use 10mm THK Double Sided Reflective PE Insulation Foam for thermal roof insulation.
2. Minimum 20 mm gap between the reflective insulation and the roofing material to prevent moisture buildup and maximize thermal performance.
3. Ensure all joints between insulation sheets are sealed with reflective tape to maintain vapor barrier integrity.
4. Use reflective tape or foil to cover edges to prevent air leakage.
5. Overlap insulation sheets by at least 50 mm to ensure continuity of the vapor barrier.
6. Install #16 G.I. Tie Wire at regular intervals along the length of the insulation foam spaced at every 300-400 mm (12-16 inches) to prevent sagging.

I. PAINTING WORKS

1. Painting works shall be as indicated on Drawings and described in the Bill of Quantities. Includes substrate preparation, application of neutralizers, putty, sanding, cleaning, protection, etc. to provide a strong or durable paint coating, following manufacturer's written instructions and acceptable trade practices.
2. Provide materials that are suitable for the job and or type of construction.
3. Paint materials shall be of the brand specified herein or approved equal by the Physical plant and Engineering Services Director.
4. Examine substrate and conditions under which painting will be performed. Proceed with the work only when conditions are satisfactory.
5. Do not paint over dirt, rust, scale, grease, moisture, scuffed surfaces, or conditions otherwise detrimental to formation of a durable paint film.
6. Clean surfaces to be painted before applying paint or surface treatments. Remove oil and grease prior to mechanical cleaning. Program cleaning and painting so that contaminants from cleaning process will not fall into wet, newly-painted surfaces.
7. Perform preparation and cleaning procedures in accordance with paint manufacturer's instructions and as herein specified, for each particular substrate condition.

II. Paint of Metal Surface

1. Structural Steel
 - a. Apply one coat of Wash Primer (mix 4 parts by volume of OS Wash Primer base to 1 part of wash primer Catalyst)
 - b. Apply two coats of Epoxy Primer Gray
 - c. Apply two coats of Semi-gloss Gray.



LII. Paint of Masonry and Concrete Surfaces

1. Kitchen Countertop
 - a. Concrete, concrete masonry, rendered smooth
 - b. One (1) coat of Acrylic Concrete Primer and Sealer by roller, let dry for 2 hours.
 - c. Putty surface imperfections, hairline cracks with Concrete Putty using putty knife.
 - d. One (1) coat Acrylic Concrete Primer and Sealer by roller let dry for 2 hours
 - e. Finish with two coats Latex Satin Finish by roller allow two hours' interval between coats.

LIII. Paint of Wood Surface

1. Kitchen Countertop Cabinets, Shelves, Door and Wall Partition
 - a. Use 3/4" thick X 4' x 8' Marine Plywood, rendered smooth
 - b. Clean the wood surface with a mild detergent and water to remove dirt, grease, and dust. Allow the wood to dry completely.
 - c. Sand the wood surface with sandpaper (80-220) to smooth out rough areas and remove any old finish.
 - d. Use wood filler to fill any holes, cracks, or imperfections and allow the filler to dry according to the manufacturer's instructions.
 - e. Allow the primer to dry completely, usually 24 hours, depending on the product and environmental conditions.
 - f. Apply the first coat of paint using a high-quality brush for detailed areas and a roller for larger surfaces.
 - g. Allow the first coat to dry completely, typically 4-6 hours for latex paint and 24 hours for oil-based paint. Apply the second coat of paint in the same manner as the first.
 - h. Ensure even coverage and smooth finish and allow the second coat to dry completely.

J. STORM DRAINAGE

1. All works herein shall be done in accordance with the latest edition of the Revised National Plumbing Code of the Philippines, rules and regulations of the National Building Code and shall comply with the requirements of the Local City Ordinances and issued Approved Plans.
2. All materials and fixtures to be used herein shall be brand new and passing Philippine Standard material quality control requirements.



3. Use .30m H x .30m W x 32.30 linear meters G.A. 24 Pre-Painted Spanish Gutter of 48".
4. Use connectors or sealant to join sections of gutters and apply gutter sealant to all joints to prevent leaks.
5. Install end caps on the gutters where they terminate without connecting to a downspout and secure with screws and sealant.
6. Attach PVC Pipe 3"Ø S-9000 as downspouts to the gutters at the planned locations.
7. Use downspout brackets to secure the downspouts to the steel post at intervals of 10 feet or less.
8. Install elbows at the bottom of the downspouts to direct water away from the foundation.
9. Use gutter sealant or silicone caulk to seal all joints and connections.

K. APPLIANCES

1. Ceiling fan

- a. The Ceiling fan appliances shall be in 18" diameter, heavy duty, with metal cover, and equipped with thermal cut of use
- b. The Ceiling fan shall have 3 - leaf aluminum fan blade
- c. The Ceiling fan shall be 360-degree Oscillation

L. PLUMBING WORKS

10. The Work to be done under this section consist of the fabrication, complete in all details, of the Plumbing Works, at the subject premises and all work and materials incidental to the proper completion of the installation.
11. All plumbing works included herein shall be executed according to the requirements of the Revised National Plumbing Code of the Philippines, and the Rules and Regulations of the Local Municipality (Zamboanga Water District).
12. Read the drawing in connection with other related drawing and specifications. The Physical Plant and Engineering Services director and the Master Plumber shall be notified immediately of any discrepancy found therein.
13. The contractor shall determine the actual location depth and invert discrepancy of all existing pipe and structures to conform with the proposed sanitary utilities.
14. The contractor's rates shall include for fixing the sanitary wares and fittings to walls and/or floors complete with all necessary fittings, accessories and bracket, including all necessary joints and connections to supply work and overflow pipes.
15. No broken or chipped sanitary wares and fittings shall be use.



that such changes of locations meet the requirements.

17. All slopes for horizontal branches shall maintain 1 – 1/2% as minimum unless noted otherwise.
18. Unless otherwise indicated, all fixtures shall be vented.
19. Size of water supply pipes to fixtures shall be in accordance with the manufacturer's instructions.
20. Unless otherwise specified, all downspout, sewer and vent pipes shall be PVC pipes.
21. All sanitary wares and fittings are to be properly protected during the construction works and cleaned before handing over the building.
22. Water Piping Test
 - a. Upon Completion of a section or of the entire water supply systems, it shall be tested and proved tight under a water pressure not less than the working pressure under which it is to be used plus 50%.
 - b. The water used for test shall be obtained from a potable source of supply.
 - c. A 344.5 Kpa air pressure may be substituted for the water test.
 - d. In neither method of test, the piping shall withstand the test without leaking for a period of not less than fifteen (15) minutes.

M. ELECTRICAL WORKS


1. All works herein shall be done in accordance with the latest edition of the Philippine Electrical Code (PEC). Relatively the same, it should follow rules and regulations of the National Building Code enforced by the building official of City of Zamboanga, and of local electric cooperative the Zamboanga City Electric Cooperative (ZAMCELCO).
2. Motor loads shall be provided with magnetic contactor coupled with overload relay as over-current-protection, and the setting shall be 125% of the motor full load current.
3. All non-current carrying electrical materials such as motor frames, metal enclosures, pull boxes and panel shall be adequately grounded in accordance with the latest edition of the PEC.
4. Electrical wiring installation shall be done in polyvinyl chloride conduits (PVC). Minimum size for all conduits shall be 20mm diameter electrical trade.
5. All wires shall be copper and thermoplastic insulated type "THHN" except the Main Feeder Conductors which is THWN. The minimum size for power is 3.5mm² and lighting shall be 2.0mm² and shall be color coded as follows:

Line A	-Red
Line B	-Black
Neutral	-Yellow with green stripes
Equipment Grounding	-Green



6. All lamps' fixtures shall be LED type, daylight white, must be dimmable, controlled via hand gestures/voice command and light switch incase electronic control fails.
7. All Convenience outlets shall be three (3) prong type, to address proper grounding.
8. The mounting height of all wiring devices shall be as follows:
 - A. Light switches 1400mm above floor finished.
 - B. Convenience outlets 300mm above floor finished or as required.
9. There shall be adequate and effective equipment grounding. Ground resistance should be no more than 5 ohms. If ground resistance exceeds 5 ohms, additional ground rods shall be provided.
10. Conductors, Main Breaker, Feeders and Circuit Protection to be used shall be of quality type to ensure safety.
11. Grounding Electrode Conductor shall not be smaller than 80mm²/ copper (Cu) or 125mm²/ Aluminum (Al).
12. All electrical installation shall be done under the direct supervision of a valid license and experienced Electrical Engineer (PEE or REE).
13. No Revisions in the design shall be done without the prior knowledge and approval of the WMSU-Physical Plant and Engineering Services, any revisions done without approval shall cause responsibility of the designer to cease as a whole.

REVIEWED AND CHECKED BY:


ENGR. RICARDO B. GONZALES
University Electrical Engineer

M. AS-BUILT (RECORD) DRAWINGS AND RELATED DOCUMENTS

2. The Contractor shall maintain a neat and accurately marked set of As-Built Drawings which shall be provided to WMSU-Physical Plant and Engineering Services for review and approval prior to final acceptance of the Work.
3. The As-Built Drawings shall represent the Work as constructed and document changes to the Work shown on the Project Plans, and shall show the actual as-constructed conditions of installed or modified systems, equipment, and material.



REPUBLIC OF THE PHILIPPINES
WESTERN MINDANAO STATE UNIVERSITY
NORMAL ROAD, BALIWASAN, ZAMBOANGA CITY
PHYSICAL PLANT AND ENGINEERING SERVICES



WMSU - PPES - FB - 007A.00
Effective Date: 08 - Sep - 2021

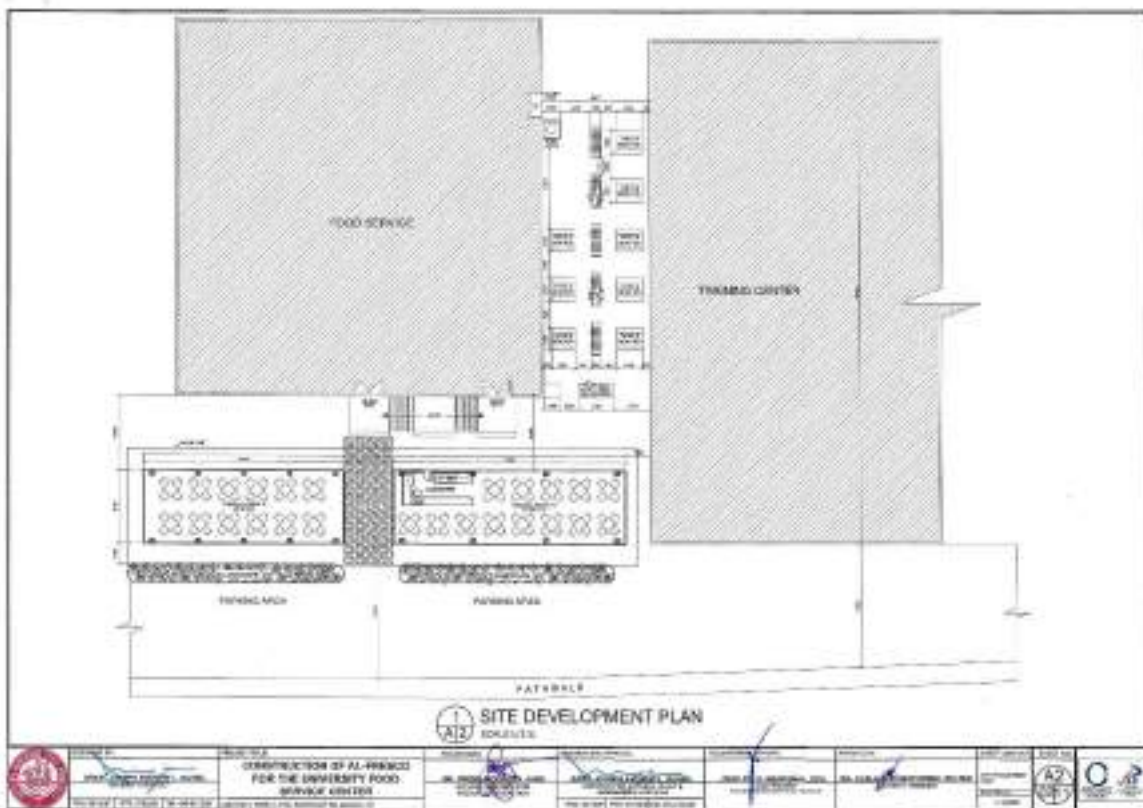
4. The As-Built (Record) Drawings shall show, by field measured dimensions, the exact locations of all underground work, including all piping and components, and the final elevations and locations of all improvements constructed, modified or adjusted.
5. Record drawings shall be available for inspection by the agency at all times and shall be updated at least weekly with all Field or Site Instructions and other written directives, Contract Change Orders, and Contract adjustments shown thereon and initialed by the Agency. Progress payments or portions thereof may be withheld if As-built Drawings are not kept up to date.
6. Unless otherwise specified in the Special Provisions, the Contractor shall submit two (2) sets of As-Built Drawings to WMSU-Physical Plant and Engineering Services at the final inspection. These As-Built Drawings shall include certification by the Contractor that the As-Built Drawings are a true representation of the Work as actually constructed.
7. The Work will not be formally accepted until the As-Built Drawings are provided to and approved by the to the WMSU-Physical Plant and Engineering Services. Final payment or a portion thereof may be withheld if final As-Built Drawings are not provided.

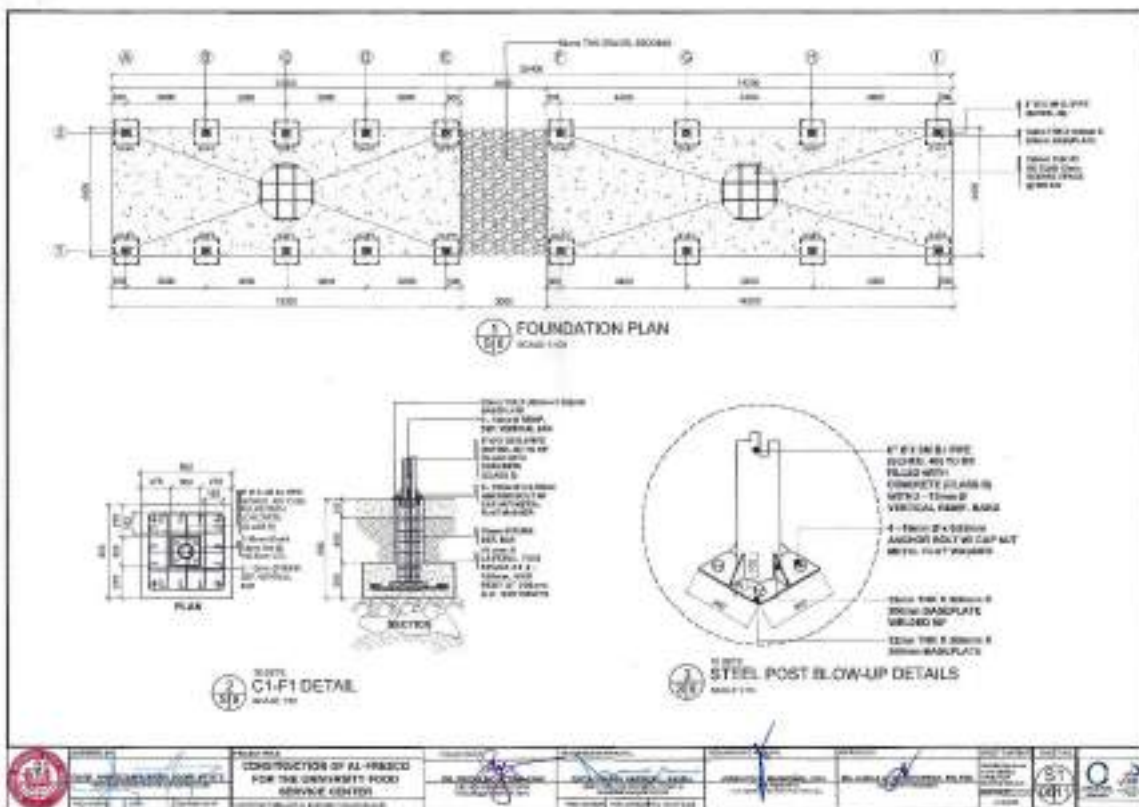
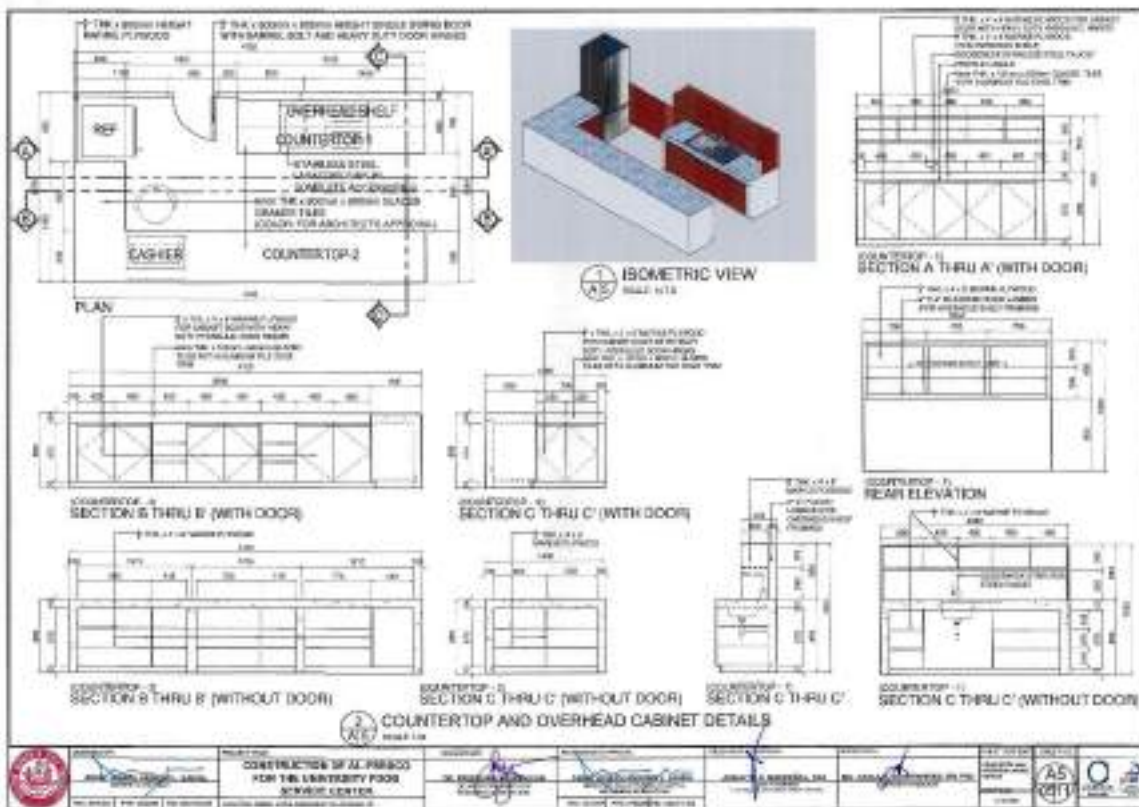
No revisions in the design shall be done without prior knowledge and approval of the WMSU-Physical Plant and Engineering Services Office, any revisions done without approval shall cause responsibility of the designer to cease as a whole.

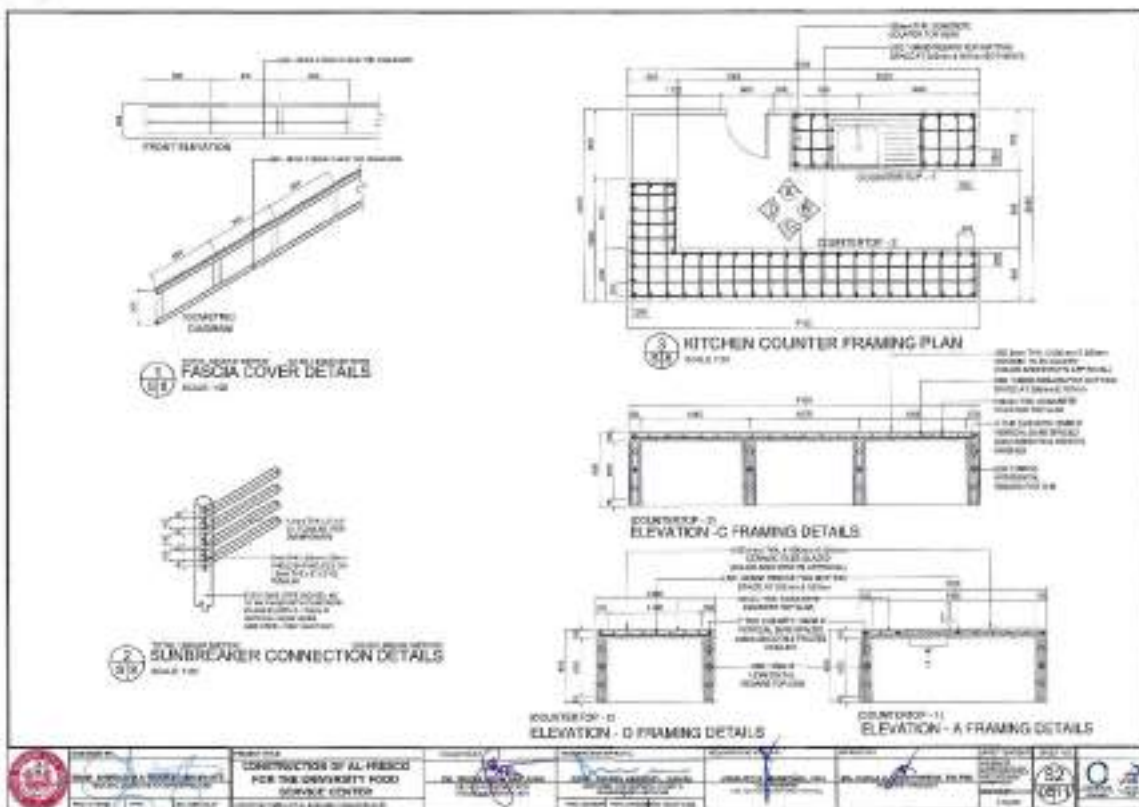
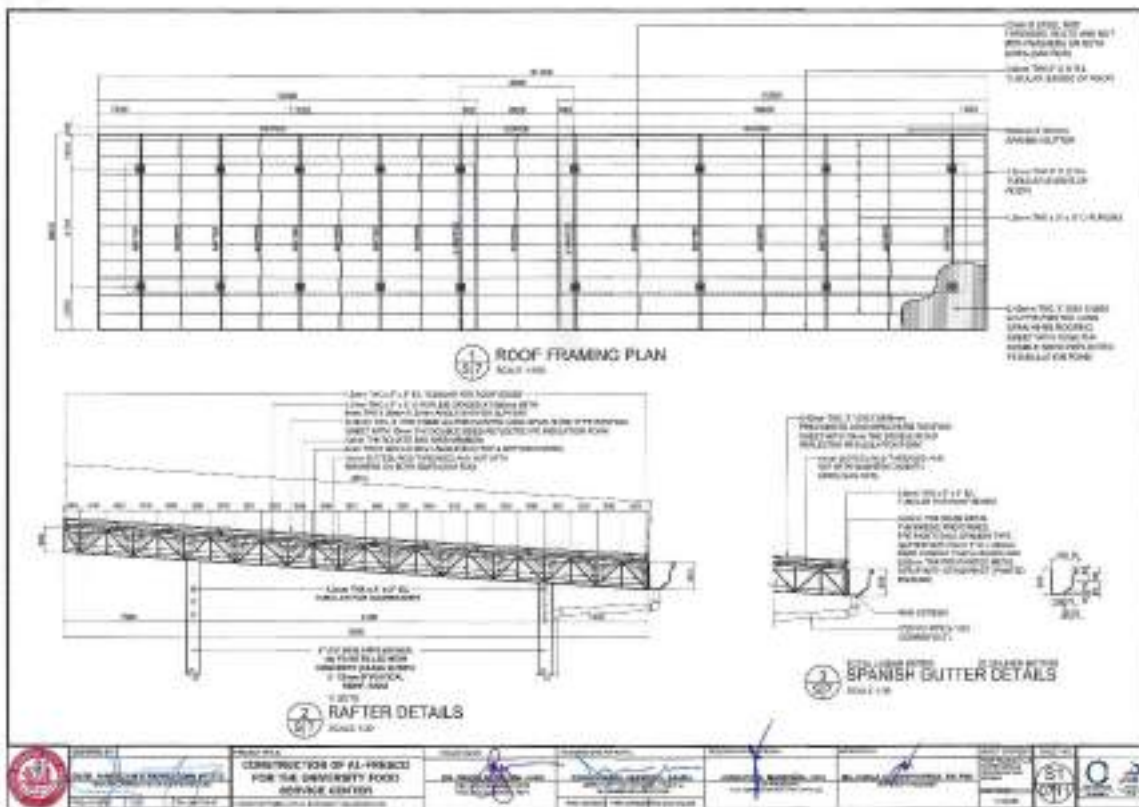
APPROVED BY:

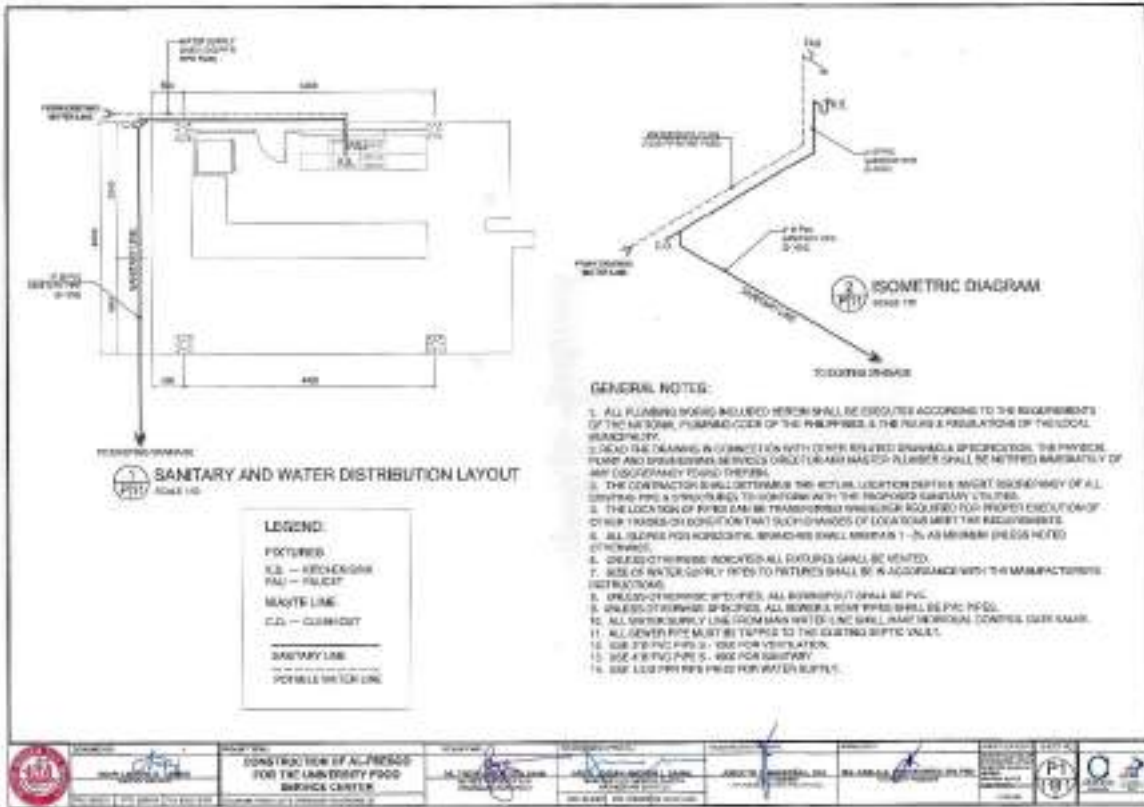

ARCH. JOSEPH ANDREW L. SAHIAL, uap
Director for Physical Plant and Engineering Services

Section VII. Drawings









Section VIII. Bill of Quantities

Notes on the Bill of Quantities

Objectives

The objectives of the Bill of Quantities are:

- a. to provide sufficient information on the quantities of Works to be performed to enable Bids to be prepared efficiently and accurately; and
- b. when a Contract has been entered into, to provide a priced Bill of Quantities for use in the periodic valuation of Works executed.

In order to attain these objectives, Works should be itemized in the Bill of Quantities in sufficient detail to distinguish between the different classes of Works, or between Works of the same nature carried out in different locations or in other circumstances which may give rise to different considerations of cost. Consistent with these requirements, the layout and content of the Bill of Quantities should be as simple and brief as possible.

Daywork Schedule

A Daywork Schedule should be included only if the probability of unforeseen work, outside the items included in the Bill of Quantities, is high. To facilitate checking by the Entity of the realism of rates quoted by the Bidders, the Daywork Schedule should normally comprise the following:

- a. A list of the various classes of labor, materials, and Constructional Plant for which basic daywork rates or prices are to be inserted by the Bidder, together with a statement of the conditions under which the Contractor will be paid for work executed on a daywork basis.
- b. Nominal quantities for each item of Daywork, to be priced by each Bidder at Daywork rates as Bid. The rate to be entered by the Bidder against each basic Daywork item should include the Contractor's profit, overheads, supervision, and other charges.

Provisional Sums

A general provision for physical contingencies (quantity overruns) may be made by including a provisional sum in the Summary Bill of Quantities. Similarly, a contingency allowance for possible price increases should be provided as a provisional sum in the Summary Bill of Quantities. The inclusion of such provisional sums often facilitates budgetary approval by avoiding the need to request periodic supplementary approvals as the future need arises. Where such provisional sums or contingency allowances are used, the SCC should state the manner in which they will be used, and under whose authority (usually the Procuring Entity's Representative's).

The estimated cost of specialized work to be carried out, or of special goods to be supplied, by other contractors should be indicated in the relevant part of the Bill of Quantities as a particular provisional sum with an appropriate brief description. A separate procurement procedure is normally carried out by the Procuring Entity to select such specialized contractors. To provide an element of competition among the Bidders in respect of any facilities, amenities, attendance, etc., to be provided by the successful Bidder as prime

Contractor for the use and convenience of the specialist contractors, each related provisional sum should be followed by an item in the Bill of Quantities inviting the Bidder to quote a sum for such amenities, facilities, attendance, etc.

Signature Box

A signature box shall be added at the bottom of each page of the Bill of Quantities where the authorized representative of the Bidder shall affix his signature. Failure of the authorized representative to sign each and every page of the Bill of Quantities shall be a cause for rejection of his bid.

These Notes for Preparing a Bill of Quantities are intended only as information for the Procuring Entity or the person drafting the Bidding Documents. They should not be included in the final documents.



Republic of the Philippines
WESTERN MINDANAO STATE UNIVERSITY
 Normal Rd., Balwasan, Zamboanga City
PHYSICAL PLANT AND ENGINEERING SERVICES



CONTRACT NAME: CONSTRUCTION OF AL FRESCO FOR THE UNIVERSITY FOOD SERVICE CENTER
 LOCATION: WMSU LOT-2, NORMAL ROAD BALWASAN, ZAMBOANGA CITY
 PROJECT DURATION (C.D.): 58 WORKING DAYS

SUMMARY OF BILL OF QUANTITIES (BIDDER)
 (All Part of Bill of Quantities)

PART NO.	DESCRIPTION	TOTAL AMOUNT
A	General Requirements	
B	Demolition/Earthworks	
E	Concrete Works	
F	Forms & Falseworks	
H	Carpentry and Joinery Works	
J	Tile Works	
K	Metal Works	
L	Roofing Works	
M	Painting Works	
N	Plumbing Works	
O	Storm Drainage	
U	Appliances	
P	Electrical Works	
Total of all Amounts:		
Total of all Amounts in words:		
Pesos: _____		
And _____ centavos _____		

Name: _____ In the _____
 of: _____
 Signed: _____ Date: _____
 Duty authorized to sign the Bid for and on behalf of: _____



Republic of the Philippines
WESTERN MINDANAO STATE UNIVERSITY
 Normal Rd., Baliwasan, Zamboanga City
PHYSICAL PLANT AND ENGINEERING SERVICES



WMSU-PES-FR-04-00
 Effective Date: 05-Sept.-2021

CONTRACT NAME: CONSTRUCTION OF AL FRESCO FOR THE UNIVERSITY FOOD SERVICE CENTER
 LOCATION: WMSU LOT-2, NORMAL ROAD BALIWASAN, ZAMBOANGA CITY
 PROJECT DURATION (C.D.): 58 WORKING DAYS

BILL OF QUANTITIES (BIDDER)

Item No.: **A**

Description: **General Requirements**

PAY ITEM NO.	DESCRIPTION	UNIT	QTY.	UNIT PRICE	AMOUNT
A.1.1	Site Temporary Perimeter Fence	m ²			
	8' wide Laminated Blue / Orange Sheet	mtrs			
	2"x 2"x 10' Coco Lumber	pcs.			
	2"x 3"x 10' Coco Lumber	pcs.			
	2W*CW Nails	kgs			
	4' CW Nails	kgs			
A.2.1	8' x 8' Terpalin Billboard	ea.			
	8' x 8' Printed Terpalins	pc.			
A.4	Mobilization and Demobilization	ls			
Total for this Page:			(In Words):		
			(In Figure):		

 Name of the Representative of the Bidder

 Position

 Name of the Bidder



Republic of the Philippines
WESTERN MINDANAO STATE UNIVERSITY
 Normal Rd., Baliwasan, Zamboanga City
PHYSICAL PLANT AND ENGINEERING SERVICES



WMSU-PPES-FR-084.09
 Revision Date: 09-Sept.-2021

CONTRACT NAME: CONSTRUCTION OF AL FRESCO FOR THE UNIVERSITY FOOD SERVICE CENTER
 LOCATION: WMSU LOT-2, NORMAL ROAD BALIWASAN, ZAMBOANGA CITY
 PROJECT DURATION (C.D.): 58 WORKING DAYS

BILL OF QUANTITIES (BIDDER)

Item No.: **B**

Description: **Earthworks**

PAY ITEM NO.	DESCRIPTION	UNIT	QTY.	UNIT PRICE	AMOUNT
B.3	Demolition/Removal of Structure & Obstructions	m ²			
B.4	Excavation and Backfill	m ³			
B.6	Filling of Gravel Bedding Materials including compaction	m ²			
Total for this Page:			(In Words):		
			(In Figure):		

Name of the Representative of the Bidder

Position

Name of the Bidder



Republic of the Philippines
WESTERN MINDANAO STATE UNIVERSITY
 Normal Rd., Balicasan, Zamboanga City
PHYSICAL PLANT AND ENGINEERING SERVICES



WMSU-PPES-FR-004.00

CONTRACT NAME: CONSTRUCTION OF AL FRESCO FOR THE UNIVERSITY FOOD SERVICE CENTER
 LOCATION: WMSU LOT-2, NORMAL ROAD BALIWASAN, ZAMBOANGA CITY
 PROJECT DURATION (C.D.): 58 WORKING DAYS

BILL OF QUANTITIES (BIDDER)

Item No.: E

Description: **Concrete Works**

PAY ITEM NO.	DESCRIPTION	UNIT	QTY.	UNIT PRICE	AMOUNT
E.3.1	Reinforced Concrete Column & Wall Footing	m ³			
	40kgs Cement (Portland)	bags			
	Coarse Sand	m ³			
	Gravel	m ³			
	15mm dia. X 6m DSB	pcs.			
	10mm dia. X 6m DSB	pcs.			
	#16 Tie Wire	kgs.			
E.3.6	Reinforced Concrete Slab-on-fill	m ³			
	CounterTop Table and Floor Slab				
	40kgs Cement (Portland)	bags			
	Coarse Sand	m ³			
	Gravel	m ³			
	10mm dia. X 6m DSB	pcs.			
	4" x 6" x 8" CHB	pcs.			
	Fine Sand (For Plastering)	m ³			
	#16 Tie Wire	kgs.			
Total for this Page:			(In Words):		
			(In Figure):		

 Name of the Representative of the Bidder



Republic of the Philippines
WESTERN MINDANAO STATE UNIVERSITY
 Normal Rd., Baliwasan, Zamboanga City
PHYSICAL PLANT AND ENGINEERING SERVICES



WMSU-PPES-FR-004.00

CONTRACT NAME: CONSTRUCTION OF AL FRESCO FOR THE UNIVERSITY FOOD SERVICE CENTER
 LOCATION: WMSU LOT-2, NORMAL ROAD BALIWASAN, ZAMBOANGA CITY
 PROJECT DURATION (C.D.): 58 WORKING DAYS

BILL OF QUANTITIES (BIDDER)

Item No.: E

Description: Concrete Works

PAY ITEM NO.	DESCRIPTION	UNIT	QTY.	UNIT PRICE	AMOUNT
--------------	-------------	------	------	------------	--------

Position

Name of the Bidder



Republic of the Philippines
WESTERN MINDANAO STATE UNIVERSITY
 Normal Rd., Baliwasan, Zamboanga City
PHYSICAL PLANT AND ENGINEERING SERVICES



WMSU-PES-FR-004.00
 Effective Date: 18-Sept.-2021

CONTRACT NAME: CONSTRUCTION OF AL FRESCO FOR THE UNIVERSITY FOOD SERVICE CENTER
 LOCATION: WMSU LOT-2, NORMAL ROAD BALIWASAN, ZAMBOANGA CITY
 PROJECT DURATION (C.D.): 53 WORKING DAYS

BILL OF QUANTITIES (BIDDER)

Item No.: F

Description: **Forms & Falseworks**

PAY ITEM NO.	DESCRIPTION	UNIT	QTY.	UNIT PRICE	AMOUNT
F.3.1	Building Forms & False Works	m ²			
	2"x 2"x 10' Coco Lumber (3,333 BdFt)	pcs.			
	2"x 3"x 10' Coco Lumber (5,000BdFt)	pcs.			
	1/2" thk x 4' x 8' Phenolic Board (for Countertop)	pcs.			
	2 1/2" CW Nails	kgs			
	4" CW Nails	kgs			
Total for this Page:			(In Words):		
			(In Figure):		

Name of the Representative of the Bidder

Position

Name of the Bidder



Republic of the Philippines
WESTERN MINDANAO STATE UNIVERSITY
 Normal Rd., Baliwasan, Zamboanga City
PHYSICAL PLANT AND ENGINEERING SERVICES



WMSU-PPES-FR-004.00
 Effective Date: 08-Sept-2021

CONTRACT ID: _____
 CONTRACT NAME: **CONSTRUCTION OF AL FRESCO FOR THE UNIVERSITY FOOD SERVICE CENTER**
 LOCATION: **WMSU LOT-2, NORMAL ROAD BALIWASAN, ZAMBOANGA CITY**
 PROJECT DURATION (C.D.): **58 WORKING DAYS**

BILL OF QUANTITIES (BIDDER)

Item No.: **H**

Description: **Carpentry and Joinery Works**

PAY ITEM NO.	DESCRIPTION	UNIT	QTY.	UNIT PRICE	AMOUNT
H.3	Cabinets	ls.			
	Cabinets & Shelves				
	3/4" thk X 4' x 8' Marine Plywood	pcs.			
	2" x 3" x 10' Kiln Dried Good Lumber	pcs.			
	2" x 4" x 10' Kiln Dried Good Lumber	pcs.			
	Wood Glue	lrs.			
	Concealed hinges (Hydraulic Type)	pairs			
	C-Type Aluminum Profile Door handle (3m/pc)	pcs.			
	1 1/2" Finishing Nails	kgs.			
	4" CW Nails	kgs.			
	Assorted Sand Paper #80, #100, #220	pcs.			
	Single Swing Door (600mm x 900mm x 3/4" thk) with Wall Partition				
	3/4" thk X 4' x 8' Marine Plywood	pcs.			
	Door hinges (Hydraulic Type)	pairs			
	3" Stainless Steel Door Latch Bolt Gate Barrel Bolts	pcs.			
Total for this Page:			(In Words):		
			(In Figure):		



Republic of the Philippines
WESTERN MINDANAO STATE UNIVERSITY
 Normal Rd., Baliwasan, Zamboanga City
PHYSICAL PLANT AND ENGINEERING SERVICES



WMSU PPE&ES-004.00
 Effective Date: 08 Sept. 2021

CONTRACT ID: _____
 CONTRACT NAME: CONSTRUCTION OF AL FRESCO FOR THE UNIVERSITY FOOD SERVICE CENTER
 LOCATION: WMSU LOT-2, NORMAL ROAD BALIWASAN, ZAMBOANGA CITY
 PROJECT DURATION (C.D.): 58 WORKING DAYS

BILL OF QUANTITIES (BIDDER)

Item No.: H

Description: Carpentry and Joinery Works

PAY ITEM NO.	DESCRIPTION	UNIT	QTY.	UNIT PRICE	AMOUNT
-----------------	-------------	------	------	------------	--------

 Name of the Representative of the Bidder

 Position

 Name of the Bidder



Republic of the Philippines
WESTERN MINDANAO STATE UNIVERSITY
 Normal Rd., Baliwasan, Zamboanga City
PHYSICAL PLANT AND ENGINEERING SERVICES



WMSU-PPES-PS-024.01
 Effective Date: 08 Sept. 2021

CONTRACT ID: _____
 CONTRACT NAME: CONSTRUCTION OF AL FRESCO FOR THE UNIVERSITY FOOD SERVICE CENTER
 LOCATION: WMSU LOT-2, NORMAL ROAD BALIWASAN, ZAMBOANGA CITY
 PROJECT DURATION (C.D.): 58 WORKING DAYS

BILL OF QUANTITIES (BIDDER)

Item No.: J

Description: **Tile Works**

PAY ITEM NO.	DESCRIPTION	UNIT	QTY.	UNIT PRICE	AMOUNT
J.3.2	Synthetic Granite Countertop	m ²			
	6mm THK x 600mm x 600mm Glazed Granite Tiles	pcs.			
	Heavy Duty Tile Adhesive	bags			
	40kgs. Cement	bags			
	6mm x 8ft PVC Tile Trim	pcs.			
Total for this Page:			(In Words):		
			(In Figure):		

Name of the Representative of the Bidder _____

Position _____

Name of the Bidder _____



Republic of the Philippines
WESTERN MINDANAO STATE UNIVERSITY
 Normal Rd., Baliwasan, Zamboanga City
PHYSICAL PLANT AND ENGINEERING SERVICES



WMSU-PPES-FR-004.03
 Effective Date: 30-Sept-2021

CONTRACT NAME: CONSTRUCTION OF AL FRESCO FOR THE UNIVERSITY FOOD SERVICE CENTER
 LOCATION: WMSU LOT-2, NORMAL ROAD BALIWASAN, ZAMBOANGA CITY
 PROJECT DURATION (C.D.): 58 WORKING DAYS

BILL OF QUANTITIES (BIDDER)

Item No.: K

Descriptor: Metal Works

PAY ITEM NO.	DESCRIPTION	UNIT	QTY.	UNIT PRICE	AMOUNT
K.1.4	Roof Truss	ls			
	Rafter	set			
	6mm Thk x 38mm x 38mm Angle Bars	pcs.			
	12mm THK Square Bars	pcs.			
	8" Ø Welding Rod	kgs.			
	#4 Grinding Disc	pcs.			
	#4 Steel Cutting Disc	pcs.			
K.1.6	Steel Column	set			
	6" Ø Black Iron Pipe (S-40)	pcs.			
	12mm Ø Reinf. Bars	pcs.			
	10mm THK x 4' x 8' Steel Plate	pc.			
	16mm Ø x 0.65mm Anchor Bolt w/ Cap Nut & Flat Metal Washer	pcs.			
	8" Ø Welding Rod	kgs.			
	Steel Column Support	lm			
	1.2mm THK 2" X 2" B.I. Tubular	pcs.			
	6mm Thk x 38mm x 38mm Angle Bars	pcs.			
	8" Ø Welding Rod	kgs.			
Total for this Page:			(In Words):		
			(In Figure):		



Republic of the Philippines
WESTERN MINDANAO STATE UNIVERSITY
Normal Rd., Baliwasan, Zamboanga City
PHYSICAL PLANT AND ENGINEERING SERVICES



WMSU-PPES-PR-004.00
Effective Date: 01-Sept-2021

CONTRACT NAME: CONSTRUCTION OF AL FRESCO FOR THE UNIVERSITY FOOD SERVICE CENTER
LOCATION: WMSU LOT-2, NORMAL ROAD BALIWASAN, ZAMBOANGA CITY
PROJECT DURATION (C.D.): 58 WORKING DAYS

BILL OF QUANTITIES (BIDDER)

Item No.: K

Description: **Metal Works**

PAY ITEM NO.	DESCRIPTION	UNIT	QTY.	UNIT PRICE	AMOUNT
-----------------	-------------	------	------	------------	--------

Name of the Representative of the Bidder

Position

Name of the Bidder



Republic of the Philippines
WESTERN MINDANAO STATE UNIVERSITY
 Normal Rd., Baliwasan, Zamboanga City
PHYSICAL PLANT AND ENGINEERING SERVICES



WMSU-PPES-FY-2024-03
 Effective Date: 20-Sept-2024

CONTRACT NAME: CONSTRUCTION OF AL FRESCO FOR THE UNIVERSITY FOOD SERVICE CENTER
 LOCATION: WMSU LOT-2, NORMAL ROAD BALIWASAN, ZAMBOANGA CITY
 PROJECT DURATION (C.D.): 58 WORKING DAYS

BILL OF QUANTITIES (BIDDER)

Item No.: L

Description: Roofing Works

PAY ITEM NO.	DESCRIPTION	UNIT	QTY.	UNIT PRICE	AMOUNT
L.1.0	Pre-Painted G.I. Sheet Roofing (Hi-Rib Type-Long Span)	m ²			
	0.40mm thk. X 1030 X 6800 mm Long Span Hi-Rib Pre-painted	pcs.			
	1.2mm x 2" x 3" x 6m Black Iron Tubular for Roof Edge	pcs.			
	1.2mm x 2" x 3" x 6m C-Purlins	pcs.			
	6mm Thk x 38mm x 38mm Angle Bars (for C-Purlins support)	pcs.			
	12mm Ø Threaded Round Bars (Sag Rod) (700 mm cutting per 6m)	pcs.			
	12mm Nut with flat Washer (for Sag rod)	pcs.			
	25mm Hexs Screw with -Unising screw with rubber Washer	kgs.			
L.1.12	Thermal Roof insulation	m ²			
	10mm THK Double Sided Reflective PE insulation Foam	m ²			
	#16 G.I. Tie Wire	kgs.			
Total for this Page:			(In Words):		
			(In Figure):		

Name of the Representative of the Bidder

Position

Name of the Bidder



Republic of the Philippines
WESTERN MINDANAO STATE UNIVERSITY
 Normal Rd., Balwasan, Zamboanga City
PHYSICAL PLANT AND ENGINEERING SERVICES



WMSU-PPES-FR-004/06
 Effective Date: 18-Sept-2021

CONTRACT NAME: CONSTRUCTION OF AL FRESCO FOR THE UNIVERSITY FOOD SERVICE CENTER
 LOCATION: WMSU LOT-2, NORMAL ROAD BALWASAN, ZAMBOANGA CITY
 PROJECT DURATION (C.D.): 58 WORKING DAYS

BILL OF QUANTITIES (BIDDER)

Item No.: **M**

Description: **Painting Works**

PAY ITEM NO.	DESCRIPTION	UNIT	QTY.	UNIT PRICE	AMOUNT
M.1.1	Paint on Metal Surface	l.s.			
	Steel Post, Rafters, Sun Breaker & C-Purlins				
	Red Oxide	gals.			
	PVC Tray	pcs.			
	Paint Thinner	gals.			
	3" Paint Brush	pcs.			
M.1.2	Paint on Concrete/Masonry Surface	l.s.			
	Exterior Countertop				
	Skimcoat	gals.			
	Concrete Primer and Sealer	lrs.			
	Elastomeric Putty (Full Putty)	lrs.			
	Topcoat	lrs.			
	PVC Tray	pcs.			
	3" Paint Brush	pcs.			
M.1.3	Paint on Wood Surface	l.s.			
	Cabinets, Shelves, Doors & Dry Wall				
	Sealer Coat	gals.			
	Full Putty	gals.			
	Elastomeric Putty	gals.			
	Thinning Solvent for Putty	gals.			
	Thinning Solvent for Sealer and Topcoat	gals.			



Republic of the Philippines
WESTERN MINDANAO STATE UNIVERSITY
 Normal Rd., Baliwasan, Zamboanga City
PHYSICAL PLANT AND ENGINEERING SERVICES



WMSU-PPES-FR-034-BB
 Effective Date: 10-Sept-2021

CONTRACT NAME: CONSTRUCTION OF AL FRESCO FOR THE UNIVERSITY FOOD SERVICE CENTER
 LOCATION: WMSU LOT-2, NORMAL ROAD BALIWASAN, ZAMBOANGA CITY
 PROJECT DURATION (C.D.): 58 WORKING DAYS

BILL OF QUANTITIES (BIDDER)

Item No.: **M**

Description: **Painting Works**

PAY ITEM NO.	DESCRIPTION	UNIT	QTY.	UNIT PRICE	AMOUNT
	Additive	gals.			
	PVC Tray	pcs.			
	3" Paint Brush	pcs.			
	PVC Tray	pcs.			
	Paint Thinner	gals.			
	3" Paint Brush	pcs.			
Total for this Page:			(In Words):		
			(In Figure):		

Name of the Representative of the Bidder _____

Position _____

Name of the Bidder _____



Republic of the Philippines
WESTERN MINDANAO STATE UNIVERSITY
 Normal Rd., Baliwasan, Zamboanga City
PHYSICAL PLANT AND ENGINEERING SERVICES



WMSU-PPES-PR-004.00
 Effective Date: 08-Sept-2021

CONTRACT NAME: CONSTRUCTION OF AL FRESCO FOR THE UNIVERSITY FOOD SERVICE CENTER
 LOCATION: WMSU LOT-2, NORMAL ROAD BALIWASAN, ZAMBOANGA CITY
 PROJECT DURATION (C.D.): 58 WORKING DAYS

BILL OF QUANTITIES (BIDDER)

Item No.: N

Description: **Plumbing Works**

PAY ITEM NO.	DESCRIPTION	UNIT	QTY.	UNIT PRICE	AMOUNT
N.1.2	PPR-Pipes with Fittings	l.s.			
	1/2"Ø PPR Pipe (PN-20)	pcs.			
	1/2"Ø PPR Coupling	pcs.			
	1/2"Ø PPR Elbow Plain	pcs.			
	1/2"Ø PPR Elbow with Tread	pcs.			
	1/2"Ø PPR Angle Valve (Heavy Duty)	pc.			
N.2.1	PVC (Sol) - Pipes with Fittings	l.s.			
	2"Ø PVC Pipe (S-1000)	pcs.			
	2"Ø PVC Elbow 90° Bend	pcs.			
	2"Ø PVC Sanitary Tee	pcs.			
	Solvent Cement	qrl.			
N.3.15	Lavatory, Counter Top, Complete Accessories (Manual Operated)	l.s.			
	0.50m x 0.70m Lab. Sink Stainless Steel with Complete Accessories	set			
Total for this Page:			(In Words):		
			(In Figure):		



Republic of the Philippines
WESTERN MINDANAO STATE UNIVERSITY
 Normal Rd., Balwasan, Zamboanga City
PHYSICAL PLANT AND ENGINEERING SERVICES



WMSU-PPES-FR-024-B0
 Effective Date: 05-Sept.-2021

CONTRACT NAME: CONSTRUCTION OF AL FRESCO FOR THE UNIVERSITY FOOD SERVICE CENTER
 LOCATION: WMSU LOT-2, NORMAL ROAD BALWASAN, ZAMBOANGA CITY
 PROJECT DURATION (C.D.): 58 WORKING DAYS

BILL OF QUANTITIES (BIDDER)

Item No.: N

Description: **Plumbing Works**

PAY ITEM NO.	DESCRIPTION	UNIT	QTY.	UNIT PRICE	AMOUNT
-----------------	-------------	------	------	------------	--------

Name of the Representative of the Bidder

Position

Name of the Bidder



Republic of the Philippines
WESTERN MINDANAO STATE UNIVERSITY
 Normal Rd., Baliwasan, Zamboanga City
PHYSICAL PLANT AND ENGINEERING SERVICES



WMSU-PPES-FR-004.00
 Effective Date: 08-Sept.-2011

CONTRACT ID: _____
 CONTRACT NAME: CONSTRUCTION OF AL FRESCO FOR THE UNIVERSITY FOOD SERVICE CENTER
 LOCATION: WMSU LOT-2, NORMAL ROAD BALIWASAN, ZAMBOANGA CITY
 PROJECT DURATION (C.D.): 58 WORKING DAYS

BILL OF QUANTITIES (BIDDER)

Item No.: 0

Description: Storm Drainage

PAY ITEM NO.	DESCRIPTION	UNIT	QTY.	UNIT PRICE	AMOUNT
0.1.2	Stainless Steel Sheet Gutter with Downspout	lm.			
	Spanish Gutter	lm.			
	.30m H x .30m W x 32.30 lm G.A. 24 Pre-Painted Spanish Gutter of 45°	pcs			
	1/8" x 1/2" Blind Rivets	box			
	Roof Sealant	lrs.			
	Downspout	lm.			
	PVC Pipe 3" Ø S-9000	pcs			
	PVC Elbow 3" Ø	pcs			
Total for this Page:			(In Words):		
			(In Figure):		

 Name of the Representative of the Bidder

 Position

 Name of the Bidder



Republic of the Philippines
WESTERN MINDANAO STATE UNIVERSITY
 Normal Rd., Baliwasan, Zamboanga City
PHYSICAL PLANT AND ENGINEERING SERVICES



WMSU-PPES-FR-054-BE
 Effective Date: 10-Sept-2021

CONTRACT NAME: **CONSTRUCTION OF AL FRESCO FOR THE UNIVERSITY FOOD SERVICE CENTER**
 LOCATION: **WMSU LOT-2, NORMAL ROAD BALIWASAN, ZAMBOANGA CITY**
 PROJECT DURATION (C.D.): **58 WORKING DAYS**

BILL OF QUANTITIES (BIDDER)

Item No.: P

Description: **Electrical Works**

PAY ITEM NO.	DESCRIPTION	UNIT	QTY.	UNIT PRICE	AMOUNT
P.1	Conduits, Boxes, & Fittings	ls.			
	20mmØ Rigid PVC	pcs			
	2"x4" PVC Utility Box	pcs			
	4"x4" PVC Junction Box	pcs			
P.2	Wires & Wiring Devices	ls.			
	2.0mm² THHN	roll			
	3.5mm² THHN	roll			
	5.5mm² THWN	mins			
P.3	Lighting / Power Fixtures (Lights, Switches & Outlets)	ls.			
	18w t8 LED Tube Set	set			
	1gang, 3prong convenience outlet	pcs			
	2gang, 3prong convenience outlet	pcs			
	2gang, 3prong Ground Fault Circuit Interrupter	pcs			
	electrical tape (big)	pcs			



Republic of the Philippines
WESTERN MINDANAO STATE UNIVERSITY
 Normal Rd., Baliwasan, Zamboanga City
PHYSICAL PLANT AND ENGINEERING SERVICES



WMSU-PYES-FR-004.08
 Effective Date: 08-Sept-2021

CONTRACT NAME: CONSTRUCTION OF AL FRESCO FOR THE UNIVERSITY FOOD SERVICE CENTER
 LOCATION: WMSU LOT-2, NORMAL ROAD BALIWASAN, ZAMBOANGA CITY
 PROJECT DURATION (C.D.): 58 WORKING DAYS

BILL OF QUANTITIES (BIDDER)

Item No: P

Description: **Electrical Works**

PAY ITEM NO.	DESCRIPTION	UNIT	QTY.	UNIT PRICE	AMOUNT
P.4	Panel Board including Circuit Breaker	i/s.			
	230V, 2P, PLUG-IN 6 BRANCHES PANEL BOARD	set			
	30AT, 50AF, 60HZ, 230V, 2P PLUG-IN CIRCUIT BREAKER (MAIN)	pcs			
	20AT, 50AF, 60HZ, 230V, 2P PLUG-IN CIRCUIT BREAKER	pcs			
	15AT, 50AF, 60HZ, 230V, 2P PLUG-IN CIRCUIT BREAKER	pcs			
Total for this Page:				(In Words):	
				(In Figure):	

Name of the Representative of the Bidder

Position

Name of the Bidder



Republic of the Philippines
WESTERN MINDANAO STATE UNIVERSITY
 Normal Rd., Baliwasan, Zamboanga City
PHYSICAL PLANT AND ENGINEERING SERVICES



WMSU-PPES-FR-004 05
 Effective Date: 09-Sept-2021

CONTRACT ID: _____
 CONTRACT NAME: CONSTRUCTION OF AL FRESCO FOR THE UNIVERSITY FOOD SERVICE CENTER
 LOCATION: WMSU LOT-2, NORMAL ROAD BALIWASAN, ZAMBOANGA CITY
 PROJECT DURATION (C.D.): 53 WORKING DAYS

BILL OF QUANTITIES (BIDDER)

Item No.: U

Description: Appliances

PAY ITEM NO.	DESCRIPTION	UNIT	QTY.	UNIT PRICE	AMOUNT
U.1	Appliances	unit			
	18" dia. Ceiling Fan (Heavy Duty)	unit			
Total for this Page:			(In Words):		
			(In Figure):		

 Name of the Representative of the Bidder

 Position

 Name of the Bidder

Section IX. Checklist of Technical and Financial Documents

Notes on the Checklist of Technical and Financial Documents

The prescribed documents in the checklist are mandatory to be submitted in the Bid, but shall be subject to the following:

- a. GPPB Resolution No. 09-2020 on the efficient procurement measures during a State of Calamity or other similar issuances that shall allow the use of alternate documents in lieu of the mandated requirements; or
- b. any subsequent GPPB issuances adjusting the documentary requirements after the effectivity of the adoption of the PBDs.

The BAC shall be checking the submitted documents of each Bidder against this checklist to ascertain if they are all present, using a non-discretionary “pass/fail” criterion pursuant to Section 30 of the 2016 revised IRR of RA No. 9184.

Checklist of Technical and Financial Documents

I. TECHNICAL COMPONENT ENVELOPE

Class "A" Documents

Legal Documents

- (a) Valid PhilGEPS Registration Certificate (Platinum Membership) (all pages) in accordance with Section 8.5.2 of the IRR;

Technical Documents

- (b) Statement of the prospective bidder of all its ongoing government and private contracts, including contracts awarded but not yet started, if any, whether similar or not similar in nature and complexity to the contract to be bid; **and**
- (c) Statement of the bidder's Single Largest Completed Contract (SLCC) similar to the contract to be bid, except under conditions provided under the rules; **and**
- (d) Special PCAB License in case of Joint Ventures **and** registration for the type and cost of the contract to be bid; **and**
- (e) Original copy of Bid Security. If in the form of a Surety Bond, submit also a certification issued by the Insurance Commission **or** original copy of Notarized Bid Securing Declaration; **and**
- (f) Project Requirements, which shall include the following:
- a. Organizational chart for the contract to be bid;
 - b. List of contractor's key personnel (*e.g.*, Project Manager, Project Engineers, Materials Engineers, and Foremen), to be assigned to the contract to be bid, with their complete qualification and experience data;
 - c. List of contractor's major equipment units, which are owned, leased, and/or under purchase agreements, supported by proof of ownership or certification of availability of equipment from the equipment lessor/vendor for the duration of the project, as the case may be; **and**
- (g) Original duly signed Omnibus Sworn Statement (OSS) **and** if applicable, Original Notarized Secretary's Certificate in case of a corporation, partnership, or cooperative; or Original Special Power of Attorney of all members of the joint venture giving full power and authority to its officer to sign the OSS and do acts to represent the Bidder.

Financial Documents

- (h) The prospective bidder's computation of Net Financial Contracting Capacity (NFCC).

Class "B" Documents

- (i) If applicable, duly signed joint venture agreement (JVA) in accordance with RA No. 4566 and its IRR in case the joint venture is already in existence **or** duly notarized statements from all the potential joint venture partners stating that they will enter into and abide by the provisions of the JVA in the instance that the bid is successful.

II. FINANCIAL COMPONENT ENVELOPE

- (j) Original of duly signed and accomplished Financial Bid Form; **and**

Other documentary requirements under RA No. 9184

- (k) Original of duly signed Bid Prices in the Bill of Quantities; **and**
- (l) Duly accomplished Detailed Estimates Form, including a summary sheet indicating the unit prices of construction materials, labor rates, and equipment rentals used in coming up with the Bid; **and**
- (m) Cash Flow by Quarter.

